

#### GENERAL TELE/DATA NOTES:

- UNLESS NOTED OTHERWISE, ELECTRICAL CONTRACTOR TO PROVIDE CABLING, JACKS, FACEPLATES AND TERMINATIONS FOR OUTLETS AS INDICATED FOR A COMPLETE OPERATIONAL SYSTEM.
- ALL CABLING TO WORKSTATION OUTLETS IS TO BE UNSHIELDED TWISTED PAIR, 4 PAIR, 24 GAUGE SOLID CONDUCTOR, CATEGORY 6 COMPLIANT, PLENUM RATED.
- PROVIDE SUPPORTS FOR ALL EQUIPMENT RACKS. SUPPORT SHALL ATTACH TO STRUCTURAL MEMBERS TO PROVIDE SUPPORT FOR TOPS OF RACKS.
- ROUTE ALL CABLES PARALLEL OR PERPENDICULAR TO STRUCTURAL MEMBERS (NO DIAGONAL RUNS), INCLUDING CABLES CONCEALED ABOVE CEILING. SUPPORT ALL CABLES IN MAXIMUM 5 FT. DISTANCES USING BRIDLE RINGS, CABLE TIES, ETC. ROUTE CABLES IN CABLE TRAY WHEN POSSIBLE.
- PROVIDE NEAT, TYPEWRITTEN LABELS ON ALL JACK FACEPLATES AND ON ALL JACKS IN CROSS CONNECTS, PATCH PANELS, ETC. COORDINATE NUMBERING SCHEME WITH OWNER.
- COORDINATE EXACT LOCATION OF EQUIPMENT IN DATA ROOM WITH OWNER, PRIOR TO INSTALLATION. OWNER SHALL RESERVE THE RIGHT TO RELOCATE ANY EQUIPMENT TO NEAR LOCATION WITHIN THAT ROOM PRIOR TO INSTALLATION AT NO ADDITIONAL COST.
- UNLESS OTHERWISE NOTED, ALL TELECOMMUNICATIONS OUTLETS ARE TO BE AS SHOWN ON TYPICAL TELECOMMUNICATIONS WALL OUTLET DETAIL, WHERE OUTLETS ARE SHOWN ON PLANS, NUMBER NEXT TO OUTLET INDICATES NUMBER OF CABLES AND JACKS TO BE MOUNTED IN OUTLET. WHERE NO NUMBER EXISTS, OUTLET IS TO BE ROUGH-IN ONLY, WITH BLANK COVER/PLATE ON BOX.
- VERIFY PHYSICAL LOCATION OF ALL EQUIPMENT IN RACKS WITH OWNER PRIOR TO INSTALLATION. OWNER SHALL RESERVE THE RIGHT TO MOVE THE LOCATION OF PATCH PANELS, SWITCHES, CABLE MANAGERS, ETC. WITHIN RACKS PRIOR TO INSTALLATION AT NO ADDITIONAL COST.
- ALL RACK MOUNTED RJ-45 PATCH PANELS SHALL ALSO INCLUDE RACK MOUNTED FACEPLATE/PANEL AND SNAP IN TYPE RJ-45 JACKS IN ALL OPENINGS IN PANEL.
- PROVIDE EQUIPMENT RACK AS SHOWN IN DETAIL AT RIGHT IN COMPUTER ROOM #20 AND WIRING CLOSET #23. (QUANTITY OF 2)

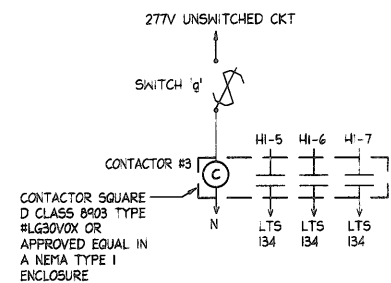
NOTE: PROVIDE (60) RJ45 TERMINATED PATCH CORDS OF SUFFICIENT LENGTH FOR CROSS CONNECTION

#### EQUIPMENT RACK DETAIL

NOT TO SCALE

#### TYPICAL TELECOMMUNICATIONS OUTLET

NOT TO SCALE



#### ROOM 134 LT. CTRL. DIAGRAM

NOT TO SCALE

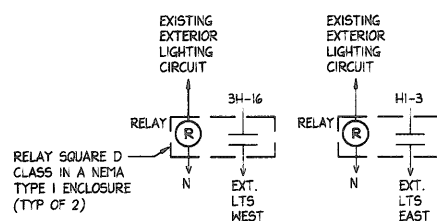
#### ELECTRICAL SYMBOLS LEGEND

DOES NOT IMPLY ALL APPEAR ON DRAWINGS

<p> <b>⊞</b> DUPLEX RECEPTACLE - 125 VOLT, 15 A  <b>⊞</b> HORIZONTAL MOUNT  <b>⊞</b> GFI GROUND FAULT INTERRUPTER  <b>⊞</b> SS SURGE SUPPRESSING  <b>⊞</b> MOUNTED IN OTHERS' EQUIPMENT - COORDINATE LOCATION W/ EQUIPMENT AND/OR CASEWORK SUPPLIER  <b>⊞</b> TWIST LOCK RECEPT. - AS NOTED  <b>⊞</b> SINGLE RECEPTACLE - 250 VOLT  <b>⊞</b> 'R' DENOTES AMPS  <b>⊞</b> 'N' DENOTES NUMBER OF POLES  <b>⊞</b> SINGLE POLE SWITCH - 120/277 VOLT, 20 AMP  <b>⊞</b> THREE-WAY  <b>⊞</b> FOUR-WAY  <b>⊞</b> TWO-POLE  <b>⊞</b> NHP SINGLE POLE SWITCH - WEATHERPROOF  <b>⊞</b> KEY OPERATED SWITCH  <b>⊞</b> TP MOTOR THERMAL OVERLOAD SWITCH WITH OIL HEATER &amp; PILOT LAMP  <b>⊞</b> FIRE ALARM HORN W/ STROBE  <b>⊞</b> FIRE ALARM HORN/STROBE W/ PULL STATION BELOW  <b>⊞</b> FIRE ALARM MANUAL PULL STATION - MATCH EXISTING  <b>⊞</b> IONIZATION TYPE SMOKE DETECTOR  <b>⊞</b> DUCT SMOKE DETECTOR  <b>⊞</b> PHOTOELECTRIC SMOKE DETECTOR  <b>⊞</b> FIRE ALARM HEAT DETECTOR  <b>⊞</b> SPRINKLER FLOW SWITCH  <b>⊞</b> SPRINKLER TAMPER SWITCH  <b>⊞</b> MAGNETIC DOOR HOLDER  <b>⊞</b> FIRE ALARM CONTROL PANEL  <b>⊞</b> FIRE ALARM ANNUNCIATOR PANEL </p>	<p> <b>⊞</b> DOUBLE DUPLEX  <b>⊞</b> 20 AMP RATED  <b>⊞</b> SPLIT WIRED  <b>⊞</b> ISOLATED GROUND  <b>⊞</b> WP WEATHER PROOF  <b>⊞</b> FLOOR OUTLET  <b>⊞</b> TELECOMMUNICATIONS OUTLET - NUMBER INDICATES QUANTITY OF JACKS AND CABLES (REQUIRES 1\"/&gt; </p>
---	---

#### GENERAL ELECTRICAL NOTES (APPLIES TO ALL 'E' SHEETS)

- VERIFY DIMENSIONS FROM ARCHITECTURAL AND EQUIPMENT SHOP DRAWINGS.
- FLUORESCENT FIXTURES INSTALLED IN ACOUSTICAL TILE SHALL BE ON ONE FOOT MODULE.
- DIMENSIONS SHOWN ON OUTLET BOXES ARE TO THE BOTTOM OF THE BOX.
- CIRCUITING TO LIGHTS IS SHOWN TO INDICATE SWITCHING AND DOES NOT INDICATE QUANTITY OR EXACT LOCATION.
- VERIFY LOCATION OF OUTLETS IN EQUIPMENT, CASEWORK, ETC. WITH EQUIPMENT SUPPLIER BEFORE ROUGHING-IN.
- PROVIDE PLASTER RINGS WHERE REQUIRED BY CEILING CONSTRUCTION.
- VERIFY LOCATION OF LIGHTS IN ROOMS CONTAINING DUCTWORK AND PIPING WITH MECHANICAL TRADES AND RELOCATE IF NECESSARY AS DIRECTED BY THE ARCHITECT.
- VERIFY HEIGHT AND LOCATION OF OUTLETS BEHIND WATER COOLERS.
- WHERE THERE IS A NUMBER NEXT TO AN EXISTING TELECOMMUNICATIONS OUTLET, REMOVE EXISTING CABLING AND DEVICE AND PROVIDE NUMBER OF NEW CABLES SHOWN WITH NEW DEVICE.
- CIRCUIT EMERGENCY LIGHT AND EXIT FIXTURES TO EMERGENCY GENERATOR CIRCUITS INDICATED. CIRCUIT FIXTURES UNSWITCHED AS NIGHT LIGHTS UNLESS INDICATED OTHERWISE.



#### EXTERIOR LIGHT CONTROL

NOT TO SCALE

MARK	MANUF. CATALOG NUMBER	MOUNT	LAMPS	VOLTAGE	REMARKS - SEE SPECIFICATIONS FOR ADDITIONAL REQUIREMENTS
F1	DAY-BRITE #2P965332-36SL-277 OR APPROVED EQUAL	RECESSED	(3) F32TB/ADV/84/ALTO	277	24\"/>

MARK	MANUF. CATALOG NUMBER	MOUNT	LAMPS	VOLTAGE	REMARKS - SEE SPECIFICATIONS FOR ADDITIONAL REQUIREMENTS
F10	INSIGHT #75674-EVA-X-2-N-UV OR APPROVED EQUAL	WALL	(1) PL-T32W/84/84/ALTO	277	STAND OFF ARMS FOR ART WORK - VERIFY EXACT MOUNTING HEIGHT AND ARM LENGTH WITH ARCHITECT PRIOR TO ROUGH-IN, UV FILTERED LENS
F11	PAL HTRP02-E-4-M-OP-PB-F01M-T8 OR APPROVED EQUAL	WALL	(2) F32TB/ADV/84/ALTO	277	PARABOLIC BATTERIES, WALL MOUNT - VERIFY EXACT MOUNTING LOCATION WITH ARCHITECT PRIOR TO ROUGH-IN.
F12	LEDALITE #94ND-CR/CYS-H-2-54-1/2CCT-2-E OR APPROVED EQUAL	RECESSED	(2) F54TB/84/84/ALTO	277	ACRYLIC PANEL LENSES, 2 CIRCUIT WIRING IN CERTAIN RUNS.
F13	DAYBRITE #DMAE-2-2-32-277 OR APPROVED EQUAL	SURFACE	(2) F32TB/ADV/84/ALTO	277	KIET LOCATION VAPOR TIGHT FIXTURE, NON CORROSIVE HARDWARE.
K1	LITON LH498R/LH498-LR467W OR APPROVED EQUAL	RECESSED	(1) MRC6 50W	277	RECESSED ADJUSTABLE, WITH UV FILTERED LENS
K2	DAYBRITE #V15-90-112-W-G OR APPROVED EQUAL	WALL	(1) 90WTS	130	ELEVATOR PIT, INSTALL FOR REQUIRED CLEARANCE.
K3	CAPR #TXB1-X1-GFF-AD-T1-B OR APPROVED EQUAL	PENDANT	(1) 40WGF	130	MONOPONT DECORATIVE GLASS PENDANT COLOR AS SELECTED BY ARCHITECT. BLACK STEM - VERIFY LENGTH WITH ARCHITECT. PROVIDE WITH PROTECTIVE SHIELD TO CONTAIN LAMP.
K4	LITON HL755-XX-24-M, L1780N-XX OR APPROVED EQUAL	TRACK	(1) 50WRC6(FL36/SPI0)	12	WHITE 2 CIRCUIT TRACK 12\"/>



#### CERTIFICATION

ERIC W. SAVICK  
REGISTERED PROFESSIONAL ENGINEER  
No. 920034  
STATE OF INDIANA

All designs, plans, drawings, and details as shown on this document are the sole property of Design Collaborative, Inc. and shall not be used for any purpose without their express written consent. The owner shall be permitted to make copies for information and reference.

**Wells County Public Library**  
200 West Washington Street  
Bluffton, Indiana 46714



REVISION DATE BY

DATE PROJECT

11/2/2005 2005.0039

TITLE  
**Electrical Schedules and Details**

SHEET

**E3.2**