

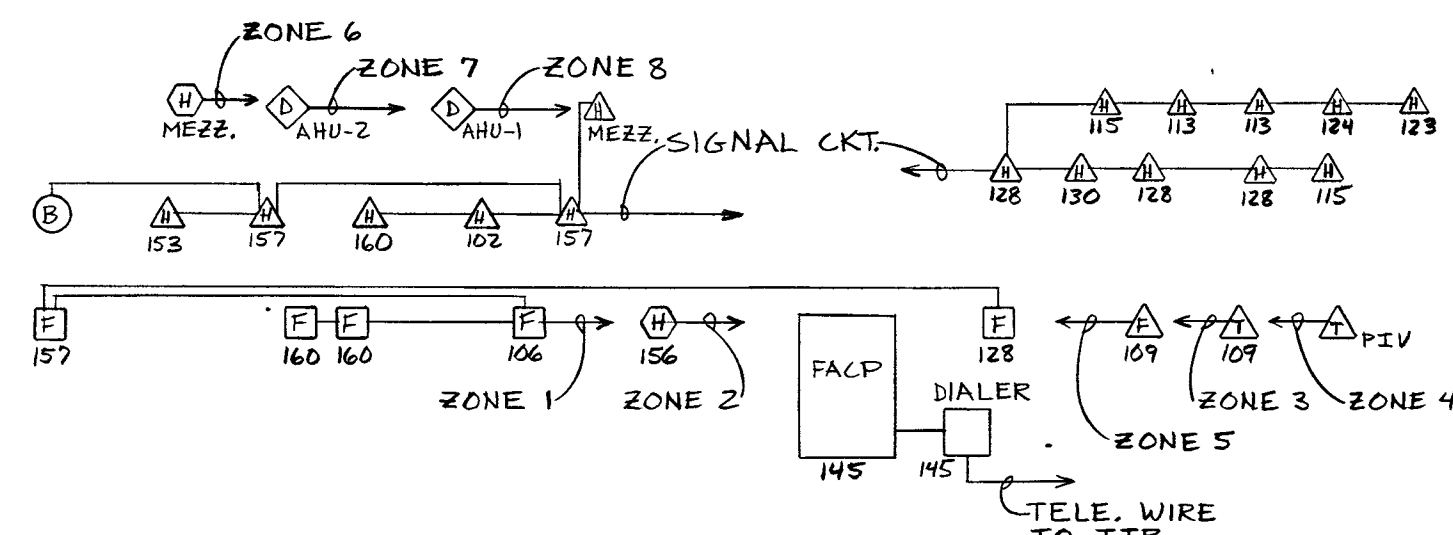
LOW VOLTAGE SWITCHING NOTES:

1. RELAYS, G.E. #RR-7, 24V COIL, 120/277 V - 20 AMP CONTACTS
2. TRANSFORMER, G.E. # RT1, 120 V. PRIMARY; #RT2, 277 VOLT PRIMARY.
3. RECTIFIER, G.E. # RA 16.
4. ENCLOSURE, G.E. # RB3 FOR UP TO 24 RELAYS.
5. WIRING # 16 IN CONDUIT 2 CONDUCTORS PER SWITCH PLUS COMMON TO EACH SWITCH GROUP-CONNECT PER MANUFACTURER'S WIRING DIAGRAMS.
6. SWITCHES, G.E. # 5935, COLOR SELECTED TO MATCH OTHER SWITCHES FOR FLUSH WALL MOUNTING.
G.E. # RS2-37-L WITH LOCATOR LAMP FOR PANEL MOUNTING AT MASTER SWITCHING LOCATIONS.
7. EQUAL PRODUCTS OF PAS ARRE ALSO ACCEPTABLE.

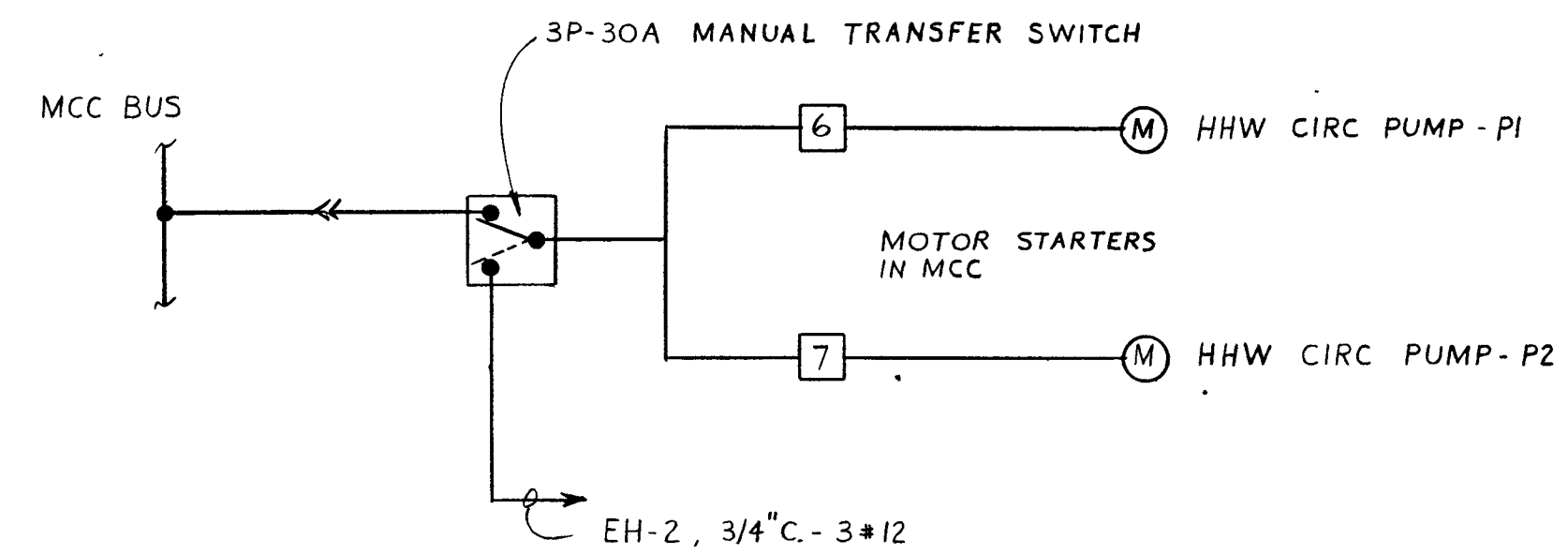
MCC #	STARTER NUMBER	EQUIPMENT DESCRIPTION	VOLTAGE	NEMA SIZE	HP	SWITCH	FUSE	CONTROL DEVICES		AUXILIARY CONTACTS		SEE NOTES(S)
								ENCL.	REMOTE	N.O.	N.C.	
1	1	AHU-1	V	25	60	50	SA, V, P	4-20MA				1
2	2	AHU-2	V	20	60	40	SA, V, P	4-20MA				1
3	3	RETURN FAN RF-1	V	10	30	20	SA, V, P	4-20MA				1
4	4	RETURN FAN RF-2	V	5	30	12	SA, V, P	4-20MA				1
5	5	RETURN FAN RF-3	V	3	30	7.5	SA, V, P	4-20MA				1
6	6	PUMP P1	1	1	3/4	30	SA, P	TC	1			
7	7	PUMP P2	1	1	1	30	SA, P	TC	1			
8	8	PUMP P3	1	1	1	30	SA, P	TC	1			
9	9	SPACE										
10	10	SPARE	1	2		60	SA, P					1
11	11	HUMIDIFIER				100						2
12	12	HUMIDIFIER				100						2
13	13	ACCU-1				100						2
14	14	ACCU-2				100						2
15	15	HEAT PUMP OUTSIDE UNIT				30	SA	TC	1			2,3
16	16	HEAT PUMP INSIDE UNIT	1	1	3/4	30	SA	TC	1			3
17-19		SPACE										
20		INCOMING LINE										

P = PILOT LAMP
SA = HAND-OFF-AUTO
TC = TEMPERATURE CONTROL CONTACTS

NOTES: 1. VARIABLE FREQUENCY AC DRIVE
2. SWITCH FUSE UNIT
3. UNDER ALTERNATE BID E1

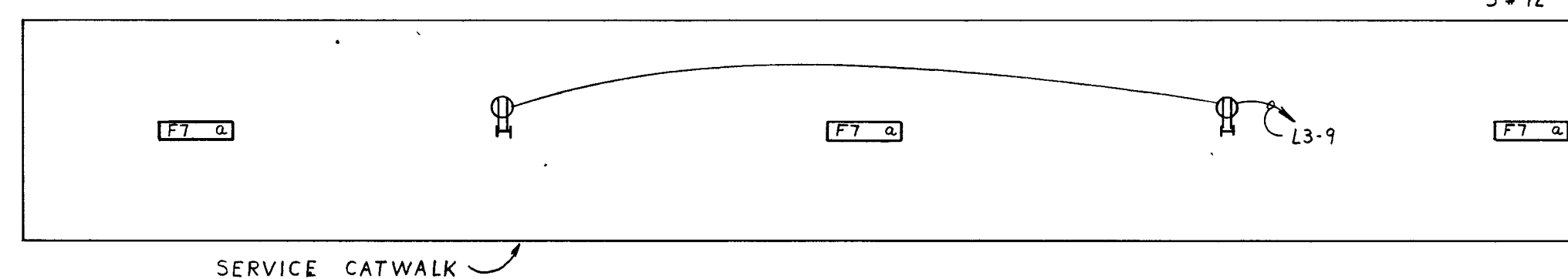


FIRE ALARM RISER DIAGRAM NTS



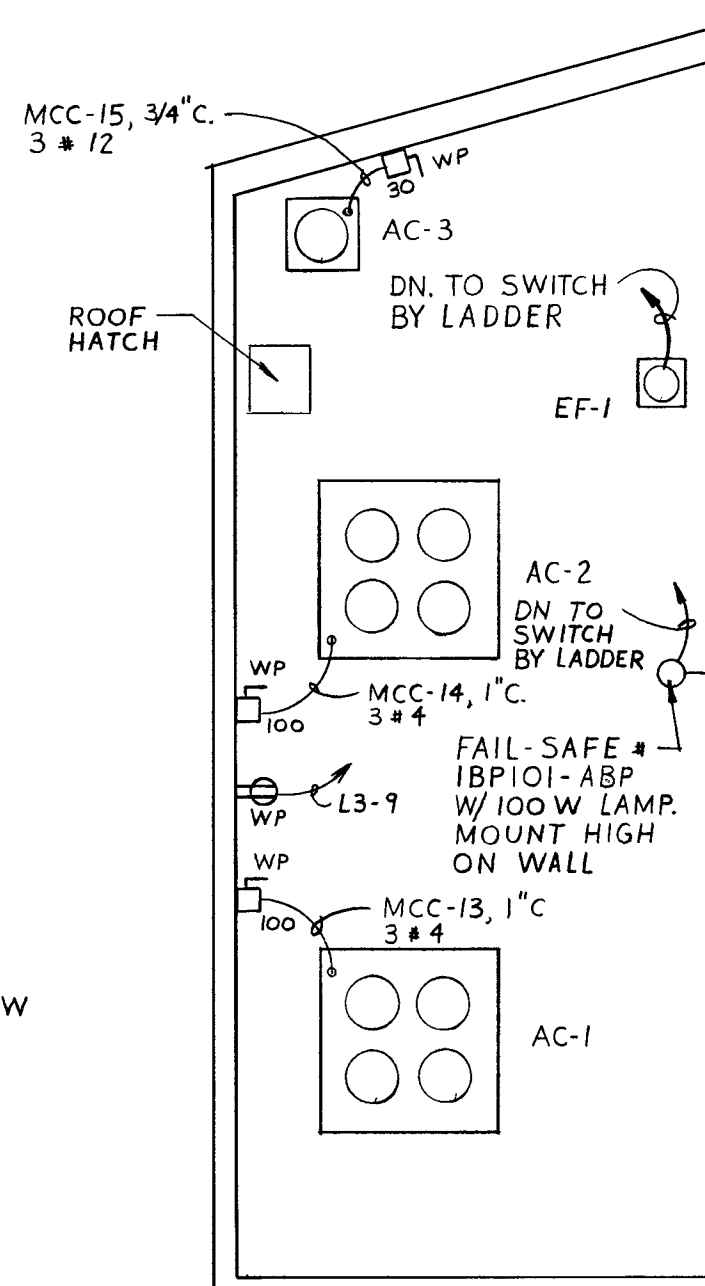
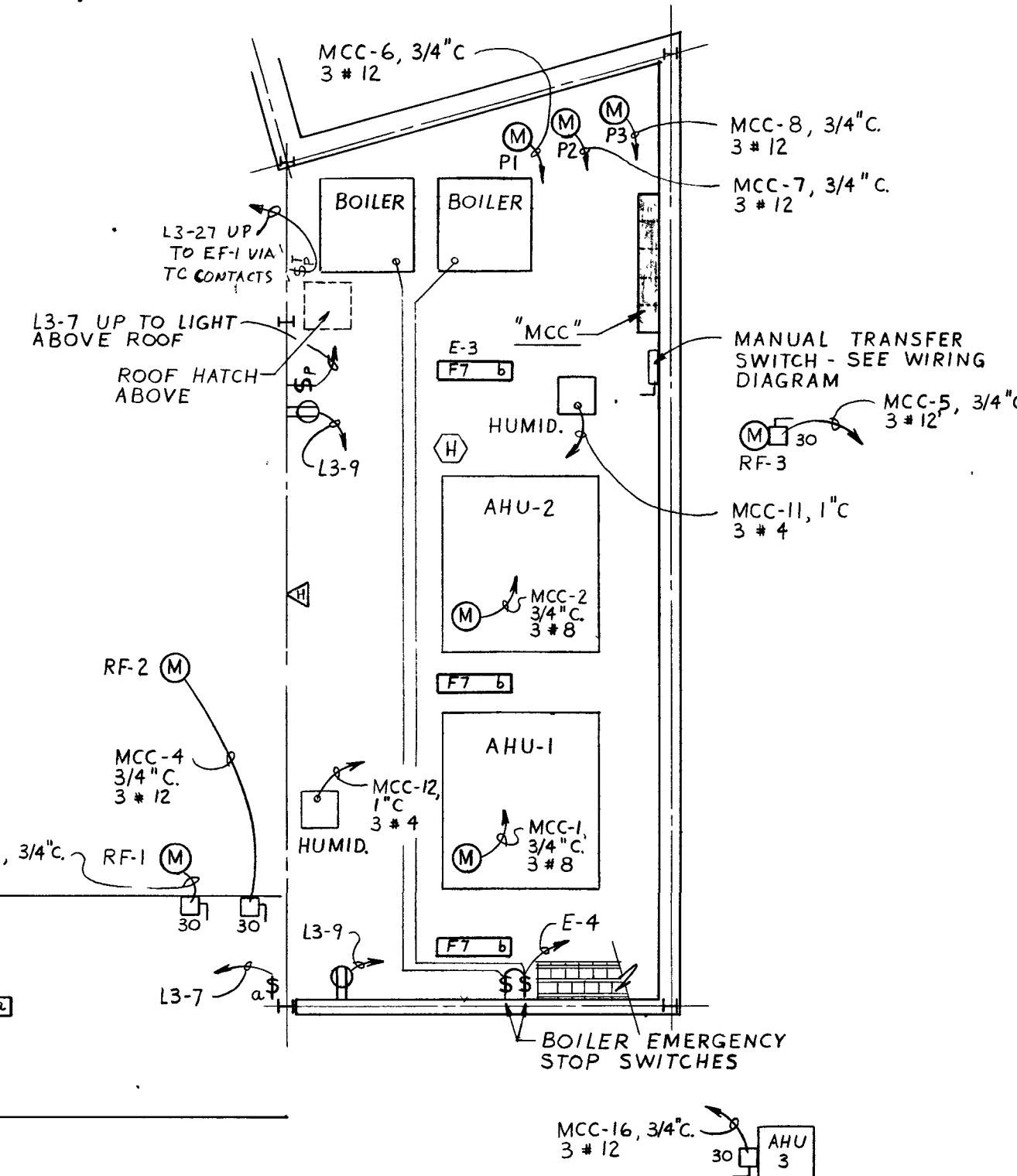
HHW PUMP WIRING DIAGRAM

NTS



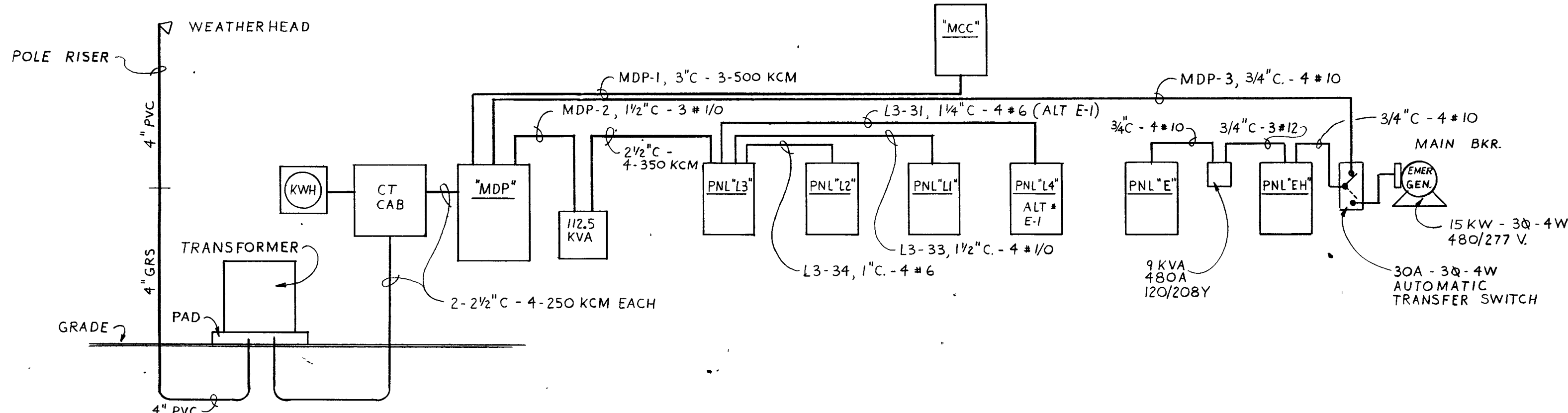
MEZZANINE ELECTRICAL PLAN

SCALE: 1/8"=1'-0"



AHU WIRING DIAGRAM

NTS



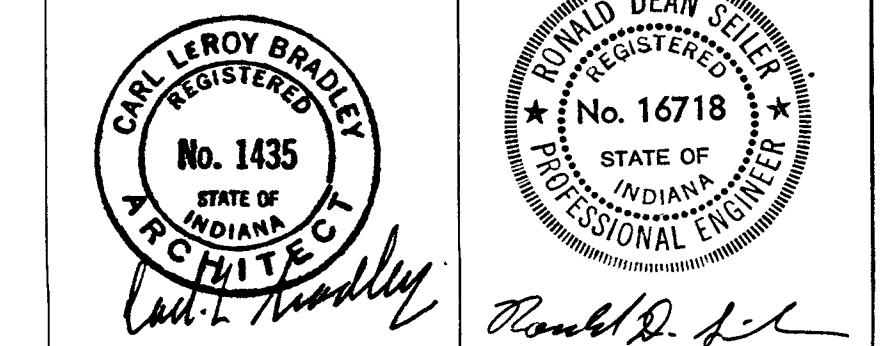
POWER RISER DIAGRAM

NTS

COORDINATE W/ LOCAL POWER CO. FOR COMPLETE SERVICE AS INDICATED - PAY REQD FEES.
CONSTRUCT TRANSFORMER PAD ACCORDING TO POWER CO. REQUIREMENTS.

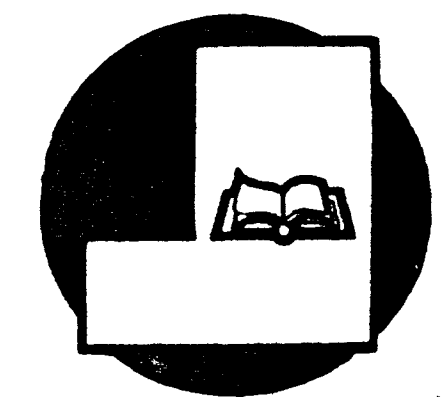
ROOF ELECTRICAL PLAN

SCALE: 1/8"=1'-0"



NOTES:

NEW FACILITY FOR:
BLUFFTON - WELLS COUNTY PUBLIC LIBRARY
BLUFFTON, INDIANA 46714



SHEET TITLE:
MEZZANINE ELECTRICAL SCHEDULES & DIAGRAMS

PROJECT NO. 88-1207
REVISIONS:
DATE: 6-20-90

SHEET NO. **E-3**

1111
5222
333
444
555
666
777
888
999
000

B
G
a
b
c