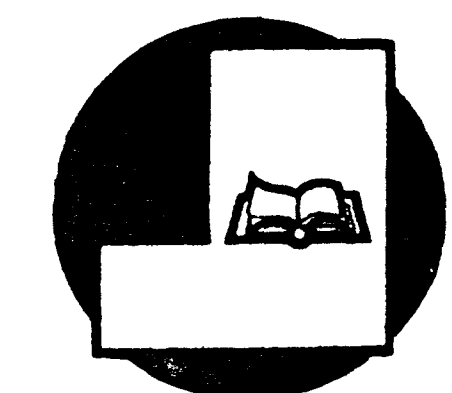


NOTES:

- Furnishing Key**
1. Side chair with arms
 2. L-shaped desk, 6' x 6'
 3. Overhead storage unit
 4. Swivel secretary chairs
 5. Swivel manager chairs
 6. Lateral files
 7. Vertical files, 12" x 36"
 8. Guest chairs
 9. Square tables, 35" x 36"
 10. Sofa, 3 seater
 11. Occasional table, 2' x 24"
 12. Table, 60" x 30"
 13. Armless chairs
 14. Wet cart
 15. A/C and stand
 16. Microfiche table, 60" x 18"
 17. Microfiche storage cabinets, 36" x 18"
 18. Square table, 36" x 36"
 19. Round table, 36" diameter
 20. Lounge chairs
 21. Rocker
 22. Sofa, 2 seater
 23. Playcape
 24. Children's chairs
 25. Boat shaped conference table, 10' x 4'
 26. Conference chairs
 27. Carts, 24" x 48"
 28. Desk, 60" x 30"
 29. Table, 8' x 2'-6"
 30. Storage unit, 60" x 36"
 31. Stack Table, 90" x 30"
 32. Stack chairs
 33. Display Case
 34. Micro Film Storage Cabinet
 35. GPOC (STAND UP)
 36. C.D. ROM
 37. Daily Newspaper
 38. Card Holder
 39. Copier
 40. Shelving (Wall hung)
 41. Copier and Stand
 42. U-shaped Desk
 43. Mailboxes
 44. 16 mm Cleaning Hood
 45. Music Listening
 46. Display Table
 47. Stacks, double sided
- ① 9' length
② 12' length
③ 15' length
④ 18' length
⑤ 21' length
⑥ 24' length
⑦ 6' length
⑧ A.V. Shelving
⑨ Stacks, single sided
⑩ 6' length
⑪ 9' length
⑫ 15' length
⑬ 18' length
⑭ 20' length
⑮ 12' length with flipper doors above
⑯ Magazine stacks
⑰ 15' length
⑱ AV stacks
⑲ 15' length

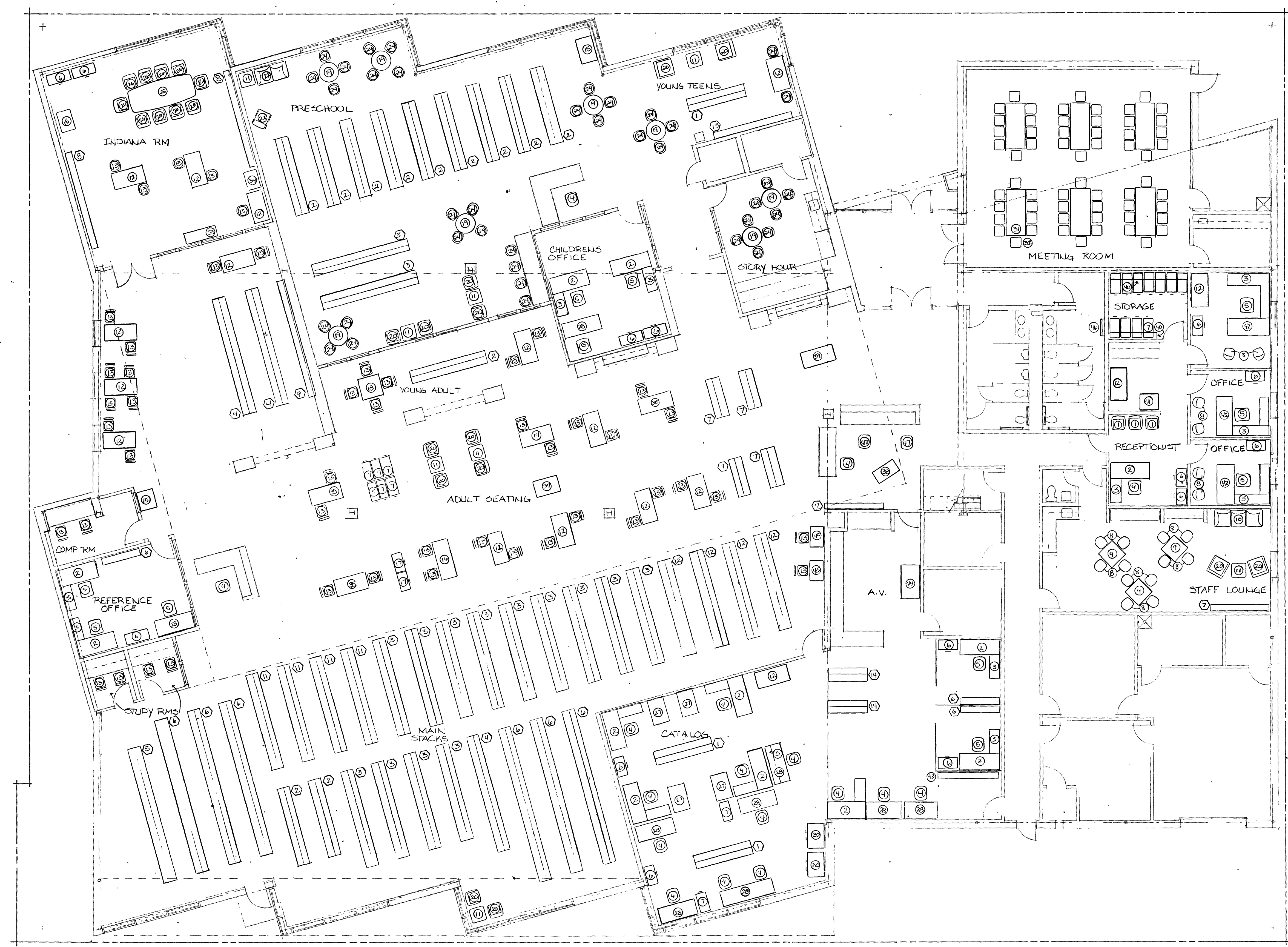
**NEW FACILITY FOR
BLUFFTON -
WELLS COUNTY
PUBLIC LIBRARY
BLUFFTON, INDIANA 46714**



SHEET TITLE :

FURNISHING PLAN

PROJECT NO. 88-1207	REVISIONS :	SHEET NO. A6.2
DATE : 6-20-90		



1111
5222
333
444
555
666
777
888
999
000

T 1.
B
G
A6.2
a
b
c