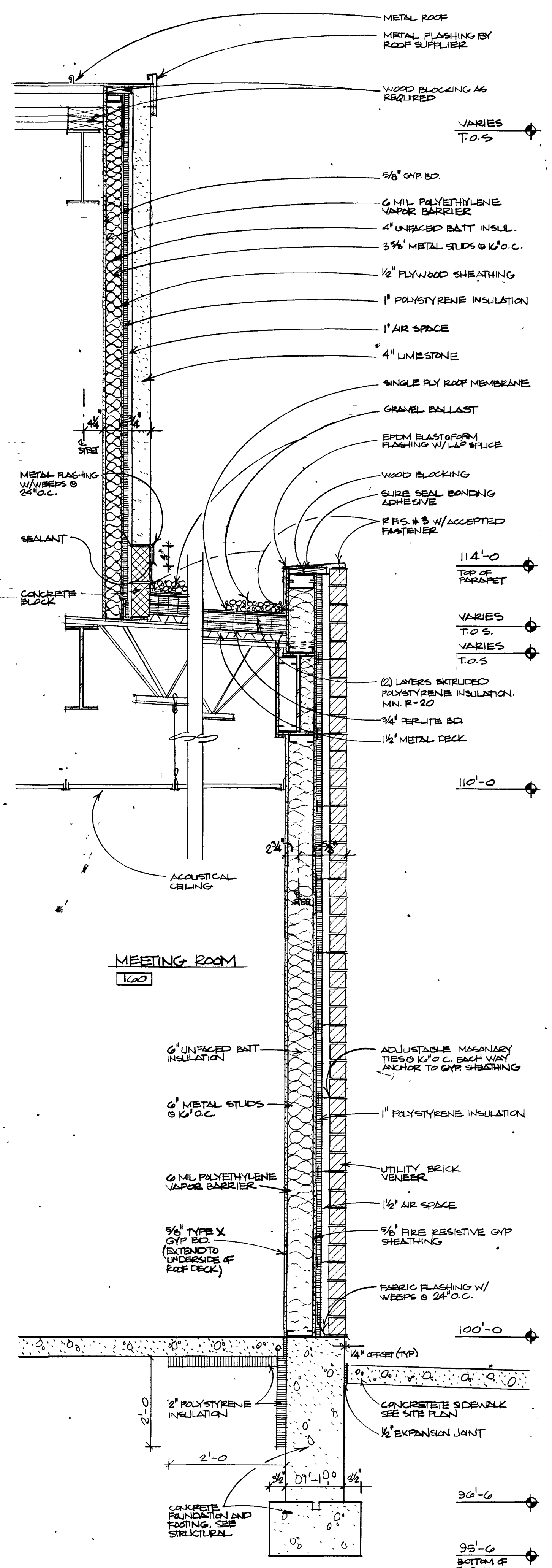
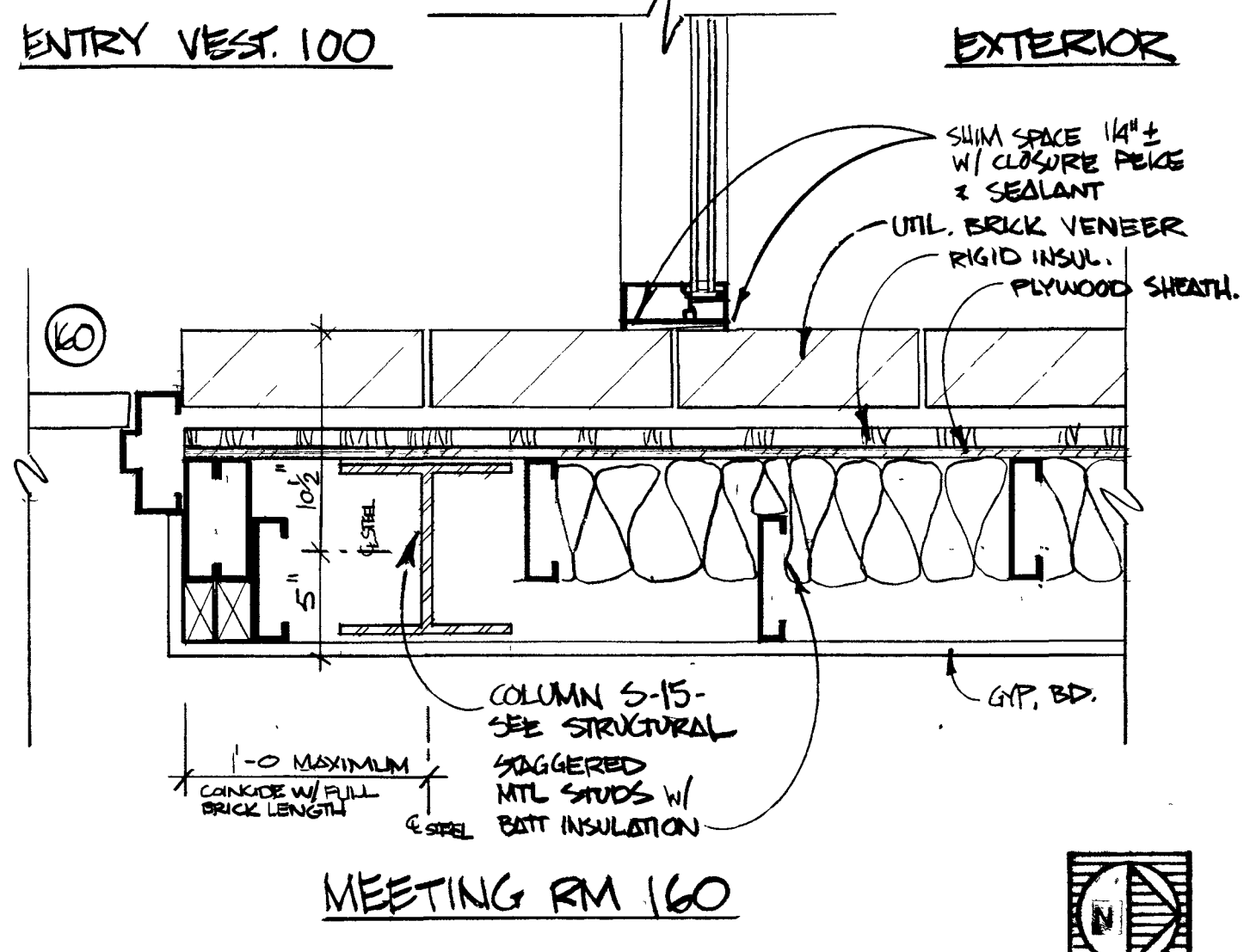


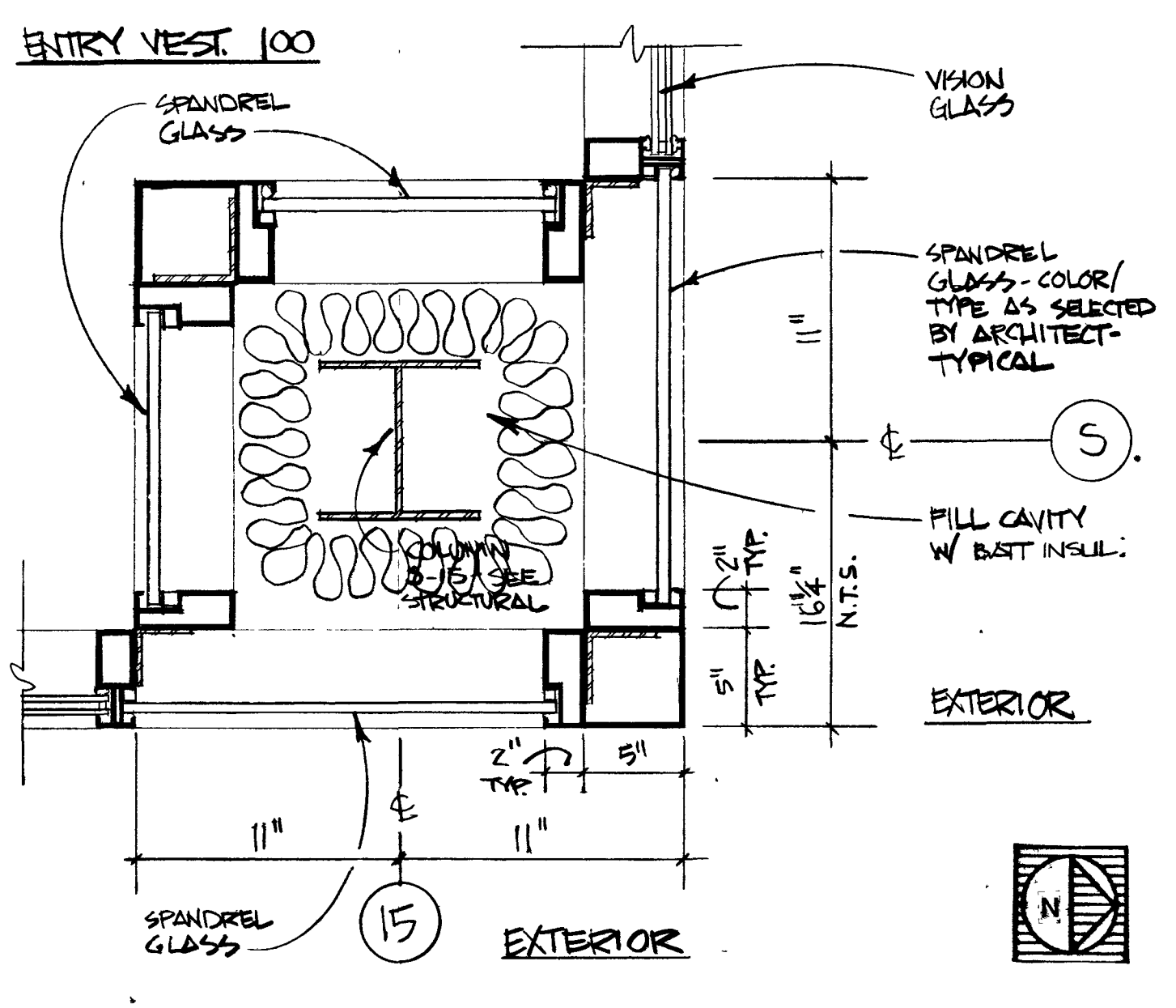
**1 WALL SECTION**  
 SCALE: 3/4" = 1'-0"



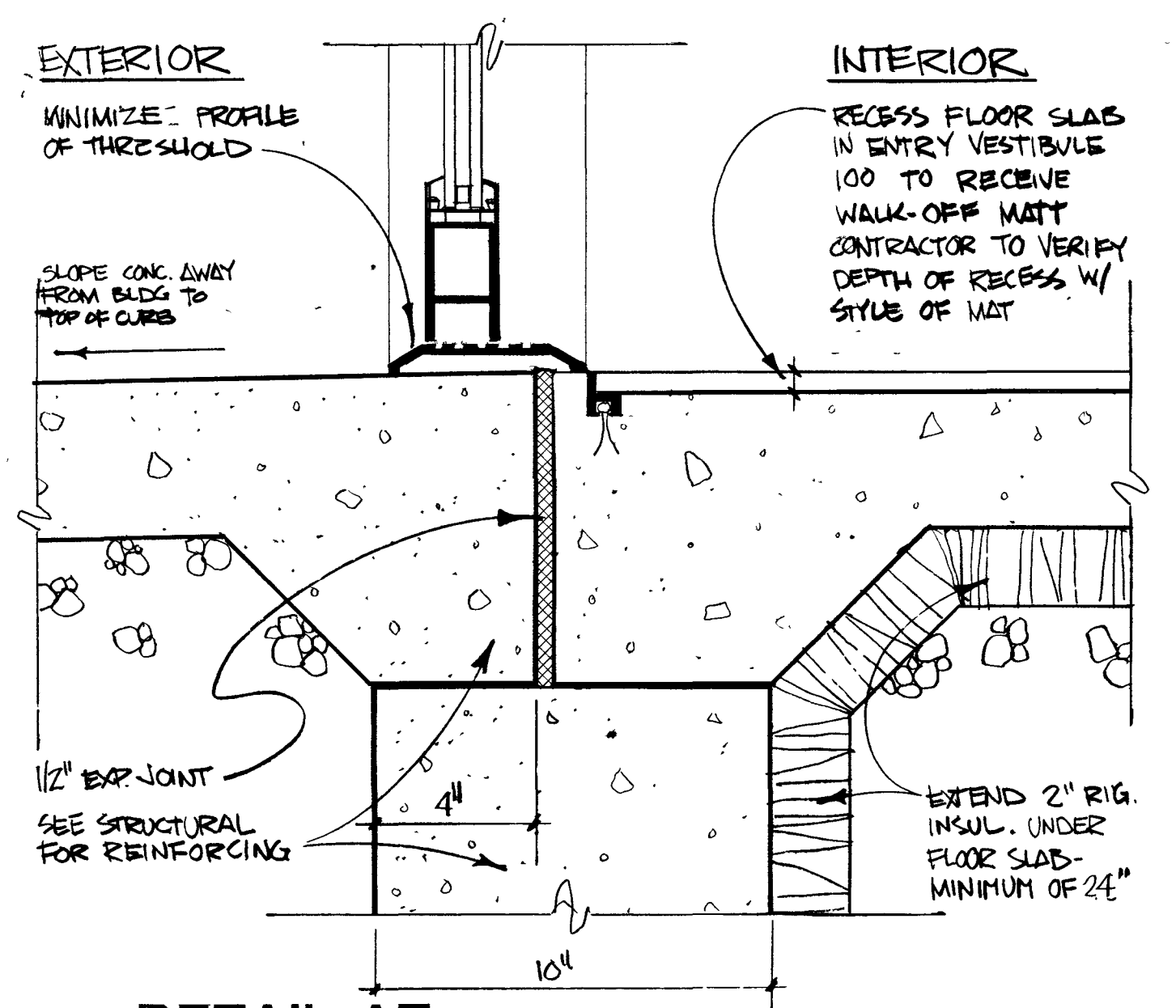
**2 ALTERNATE #1 WALL SECTION**  
 SCALE: 3/4" = 1'-0"



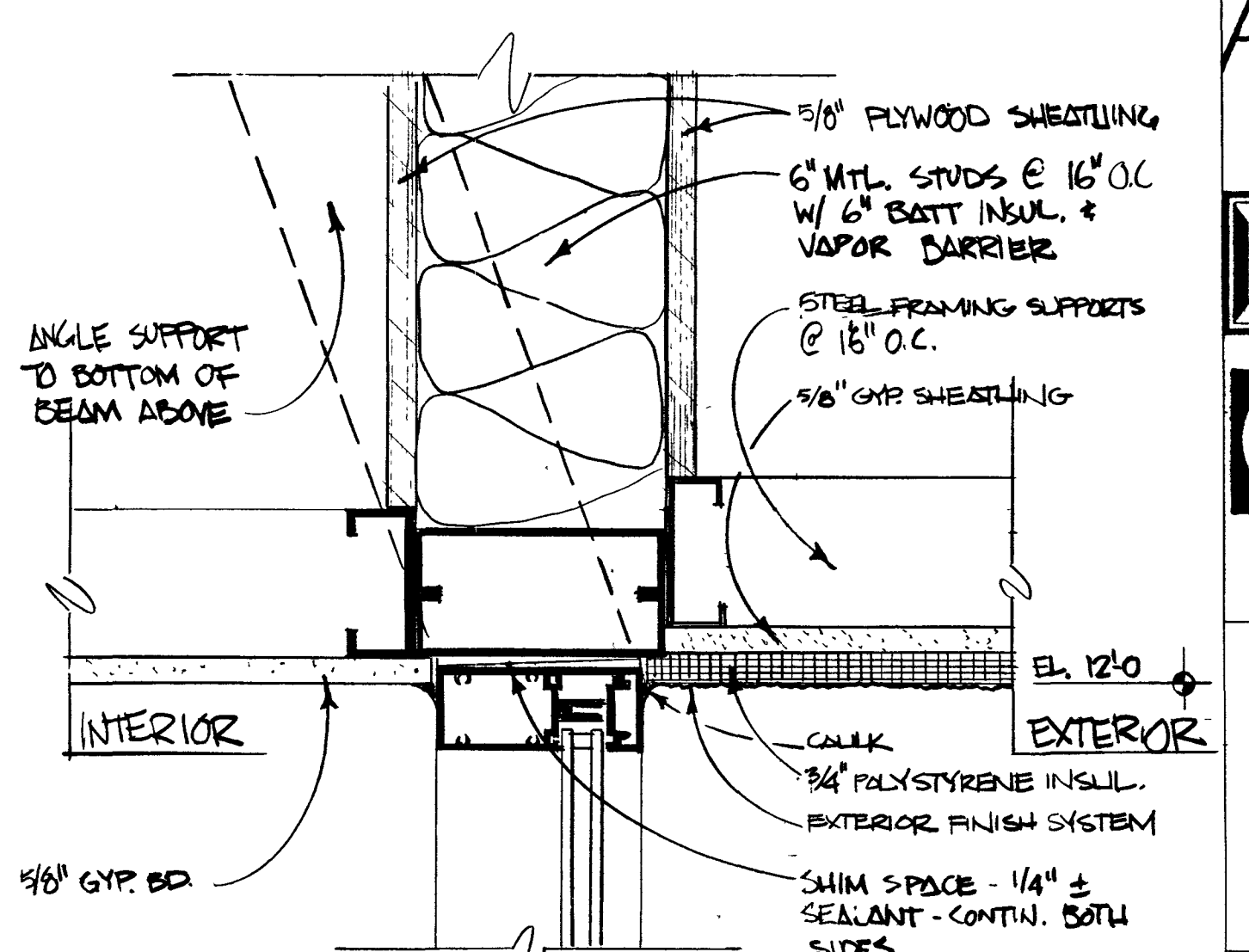
**3 ALTERNATE #1 ENTRY VESTIBULE 100 DETAIL AT COLUMN CORNER**  
 SCALE: 1 1/2" = 1'-0"



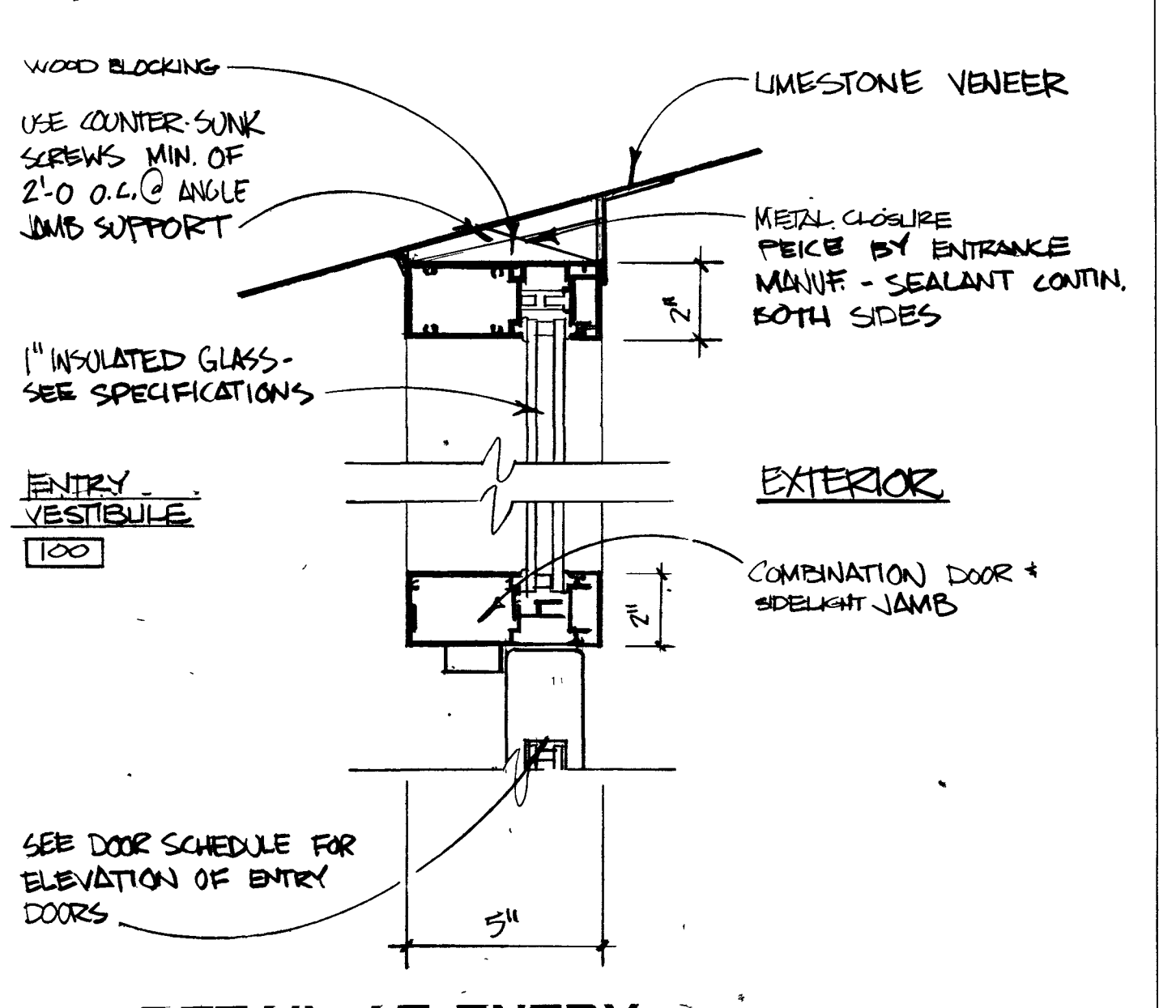
**4 ENTRY VESTIBULE 100 DETAIL AT COLUMN CORNER**  
 SCALE: 1 1/2" = 1'-0"



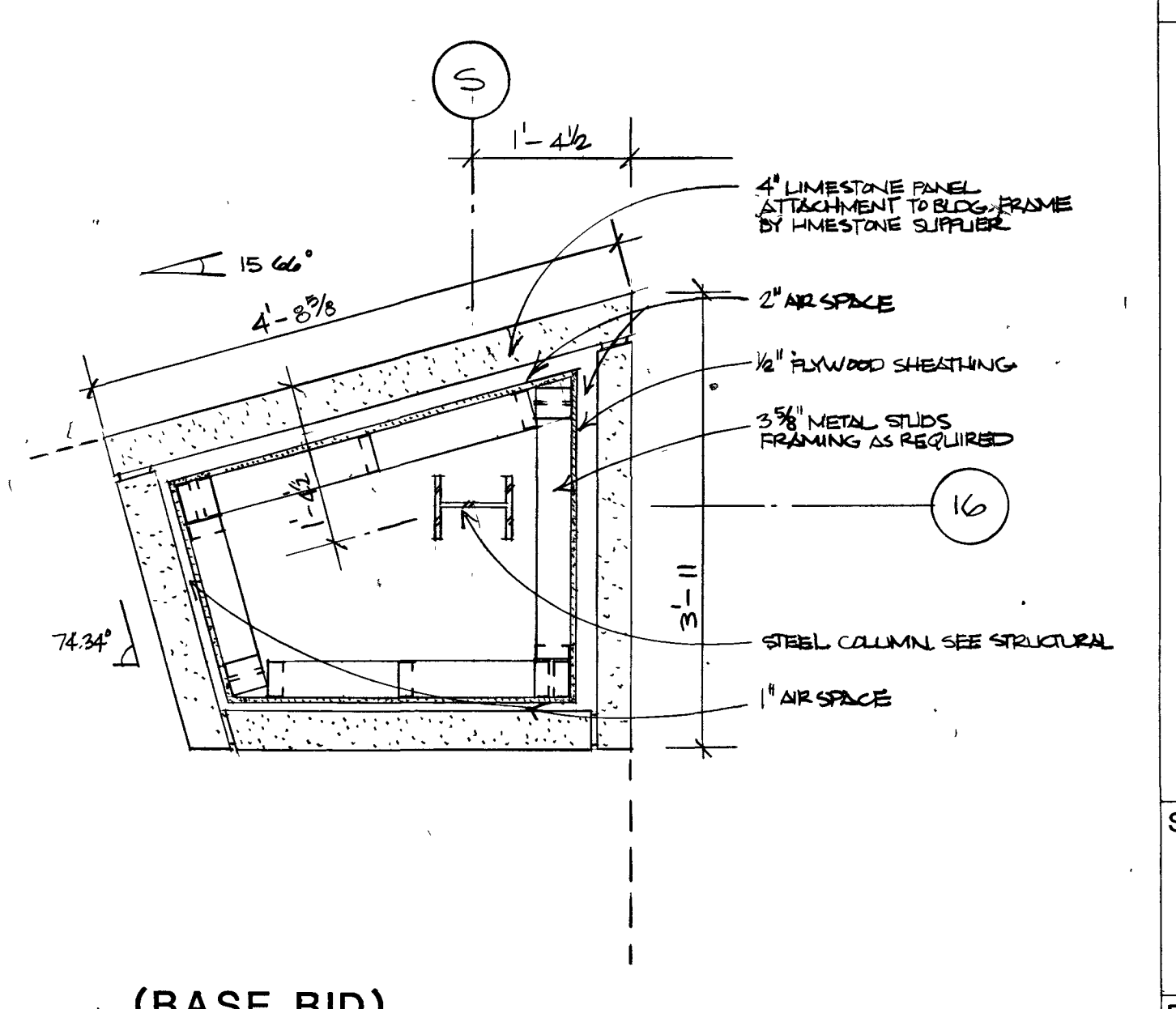
**5 DETAIL AT ENTRY DOOR THRESHOLD**  
 SCALE: 3" = 1'-0"



**6 DETAIL AT ENTRY WINDOW HEAD**  
 SCALE: 3" = 1'-0"



**7 DETAIL AT ENTRY WINDOW JAMB & DOOR FRAME**  
 SCALE: 3" = 1'-0"



**8 (BASE BID) DETAIL AT COLUMN ENCLOSURE**  
 SCALE: 3/4" = 1'-0"

**ARCHONICS**  
 ARCHITECTURE AND PLANNING  
 701 SOUTH CLINTON • FORT WAYNE, INDIANA 46802-1882

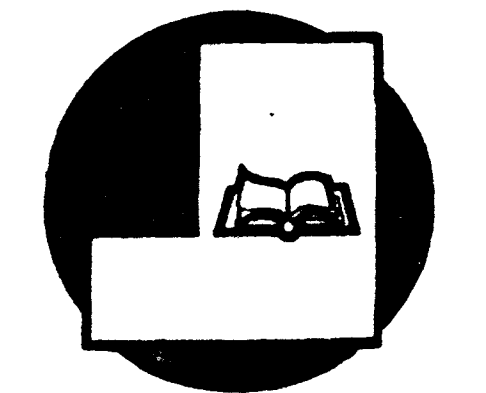
**DINIUS, HELMECZI & ASSOC., INC.**  
 CONSULTING ENGINEERS MECHANICAL & ELECTRICAL  
 4721 LIMA ROAD FORT WAYNE, IN 46808 219/482-7476

**STRUCTURAL ENGINEERING SERVICES**  
 DIVISION OF MASTER DESIGN, INC.  
 9930 Nurestine Road Fort Wayne, IN 46835 219/627-2284

CAROL LEROY BRIDGES  
 REGISTERED PROFESSIONAL ENGINEER  
 No. 1435  
 STATE OF INDIANA  
 R. C. WHITE & SONS  
 Carl L. Bradley

NOTES:

NEW FACILITY FOR  
**BLUFFTON - WELLS COUNTY PUBLIC LIBRARY**  
 BLUFFTON, INDIANA 46714



SHEET TITLE:  
**WALL SECTIONS & DETAILS**

PROJECT NO. 88-1207	REVISIONS:	SHEET NO. A3.5
DATE: 6-20-90		