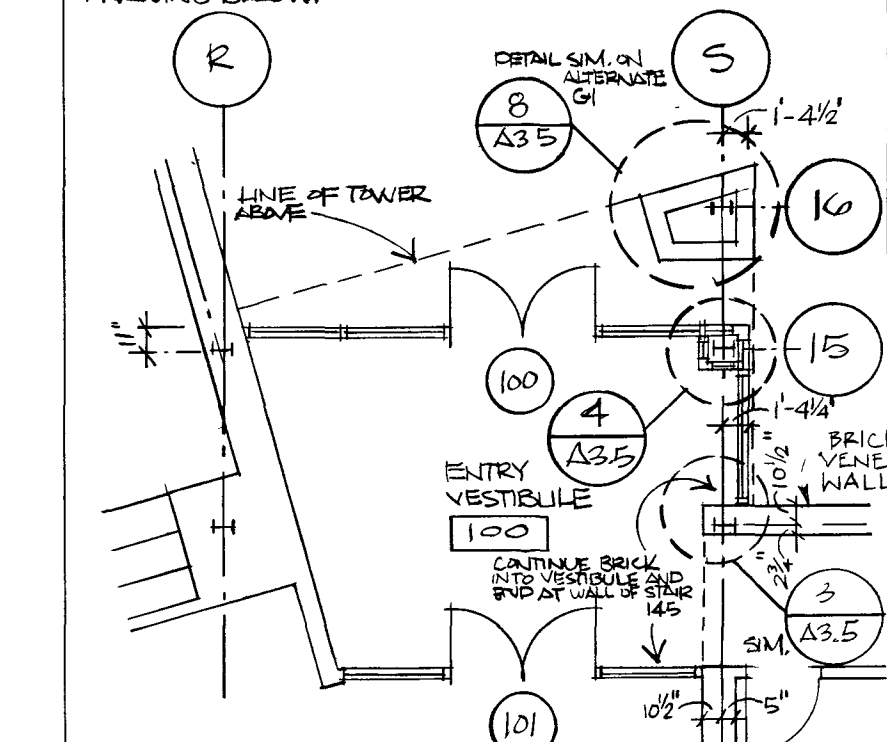


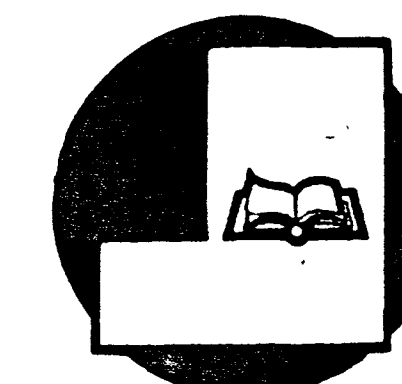
NOTES:
INTERIOR PARTITIONS TO BE 5" UNLESS OTHERWISE NOTED. 3/8" METAL STUD W/ 1/2" DRYWALL TO EITHER SIDE.
ALL DIMENSIONS TO CENTERLINE OF STEEL MC PARTITIONS UNLESS OTHERWISE NOTED.
G/ DENOTES SOUND INSULATED PARTITIONS. G/ METAL STUDS W/ (1) LAYER 5/8" DRYWALL TO EITHER SIDE.
SEE REFLECTED CEILING PLAN A-1 FOR FIRE RATED WALLS.
CC = DENOTES 2'-0" WIDE CORIAN COUNTERTOP W/ INTEGRAL BOWLS, 2" BACKSPLASH AND SERRATED WINDOW SILL MAKING LIGHT 2" ABOVE FINISHED FLOOR TO TOP OF COUNTERTOP. 29" MINIMUM CLEARANCE BELOW APRON.
FEC = DENOTES FIRE EXTINGUISHER CABINET.

ALTERNATE # G/1:
ALTERNATE #1 TO INCLUDE MEETING ROOM 160, STORAGE ROOM 162, AND KITCHENETTE 161. SEE SPECIFICATIONS, BASE BID ENTRY VESTIBULE DRAWING BELOW.



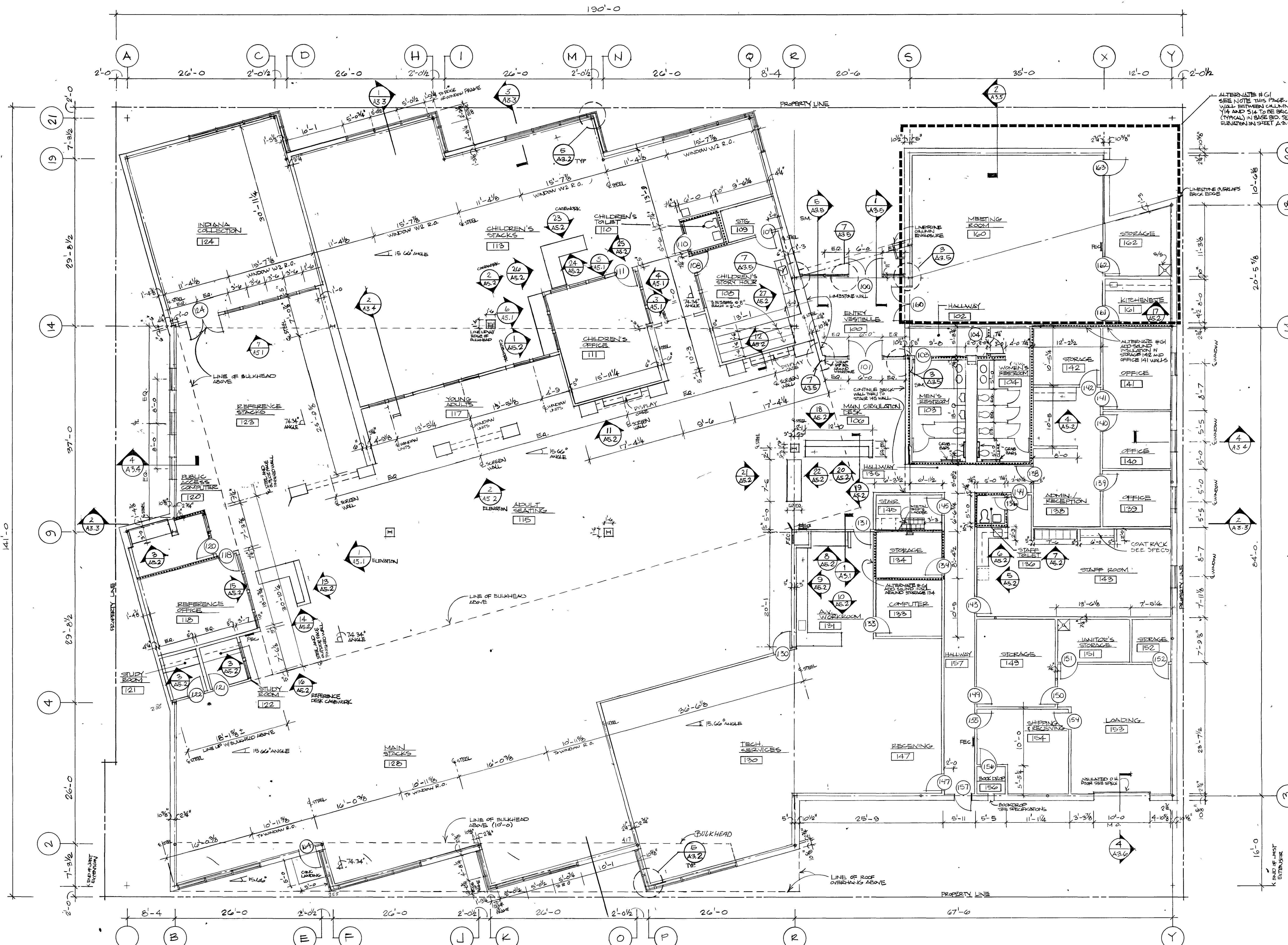
ENTRY VESTIBULE (BASE BID)
SCALE: 1/8" = 1'-0"

**NEW FACILITY FOR
BLUFFTON -
WELLS COUNTY
PUBLIC LIBRARY**
BLUFFTON, INDIANA 46714



SHEET TITLE:
FLOOR PLAN

PROJECT NO. 88-1207	REVISIONS:	SHEET NO. A2.1
DATE: 6-20-90		



FLOOR PLAN
SCALE: 1/8" = 1'-0"

1111
5222
333
444
555
666
777
888
999
000

T 1.
B-1
G
A2.1 a
b
c

