



CERTIFICATION



Eric W. Sank

All concepts, ideas, designs, plans and details as shown on this document are the sole property of Design Collaborative, Inc. and shall not be used for any purpose without their expressed written consent. The owner shall be permitted to retain copies for information and reference.

Wells County Public Library
 200 West Washington Street
 Bluffton, Indiana 46714



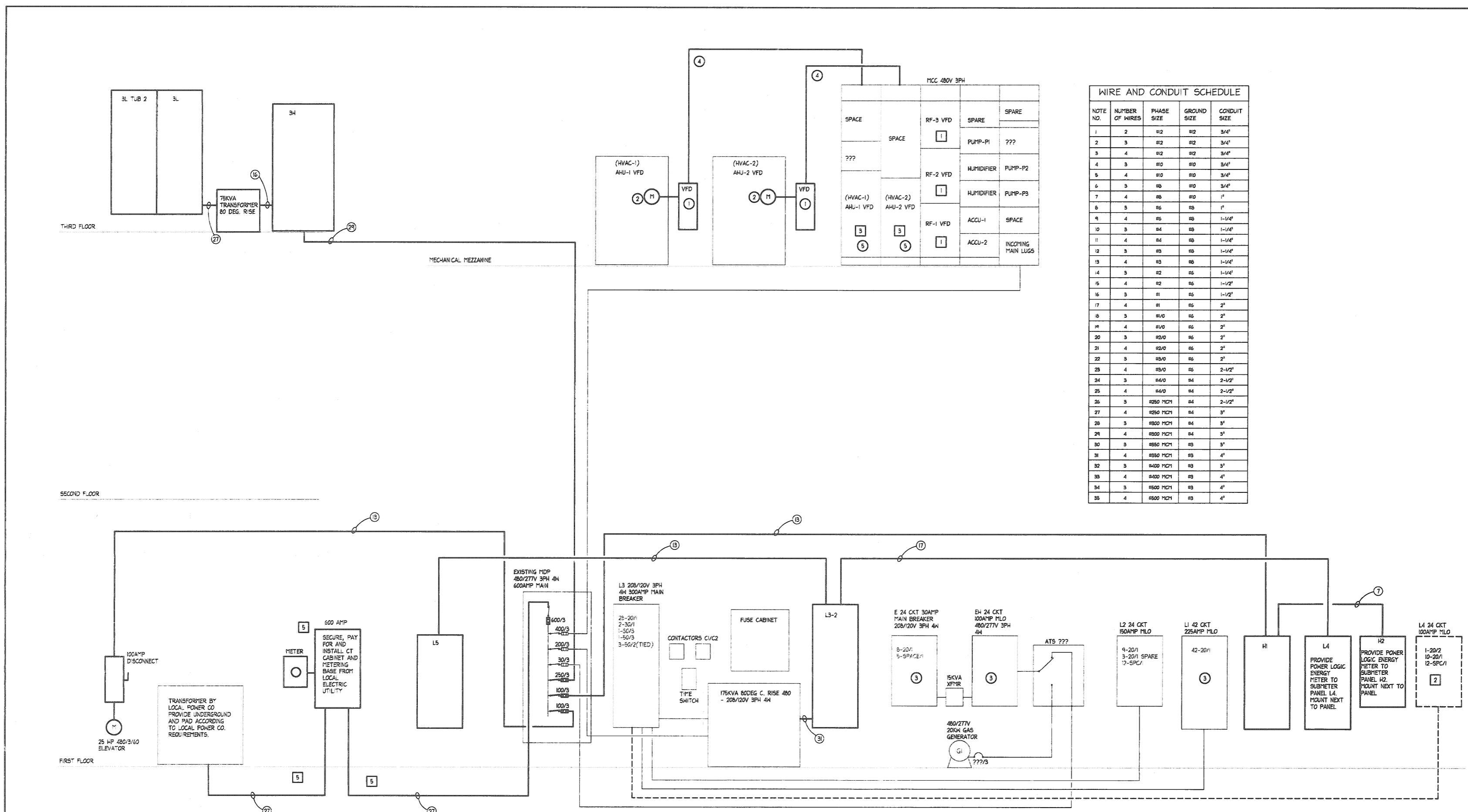
REVISION _____ DATE _____ BY _____

DATE 11/2/2005 PROJECT 2005.0039
TITLE _____ SHEET _____

Online Power Riser Diagram
SHEET

E3.1

NOTE NO.	NUMBER OF WIRES	PHASE SIZE	GROUND SIZE	CONDUIT SIZE
1	2	#12	#12	3/4"
2	3	#12	#12	3/4"
3	4	#12	#12	3/4"
4	3	#10	#10	3/4"
5	4	#10	#10	3/4"
6	3	#8	#10	3/4"
7	4	#8	#10	1"
8	3	#6	#8	1"
9	4	#6	#8	1-1/4"
10	3	#4	#8	1-1/4"
11	4	#4	#8	1-1/4"
12	3	#3	#8	1-1/4"
13	4	#3	#8	1-1/4"
14	3	#2	#6	1-1/4"
15	4	#2	#6	1-1/2"
16	3	#1	#6	1-1/2"
17	4	#1	#6	2"
18	3	#1/0	#6	2"
19	4	#1/0	#6	2"
20	3	#1/0	#6	2"
21	4	#1/0	#6	2"
22	3	#1/0	#6	2"
23	4	#1/0	#6	2-1/2"
24	3	#1/0	#6	2-1/2"
25	4	#1/0	#6	2-1/2"
26	3	#250 MC1	#4	2-1/2"
27	4	#250 MC1	#4	3"
28	3	#200 MC1	#4	3"
29	4	#200 MC1	#4	3"
30	3	#150 MC1	#3	3"
31	4	#150 MC1	#3	4"
32	3	#100 MC1	#3	3"
33	4	#100 MC1	#3	4"
34	3	#100 MC1	#3	4"
35	4	#100 MC1	#3	4"



LEGEND

- _____ NEW
- DEMO
- _____ EXISTING
- _____ EXISTING EQUIP.

ELECTRICAL DEMO KEY NOTES (APPLIES TO E3.1 SHEET)

- 1 REMOVE IN ENTIRETY INCLUDING ASSOCIATED ABANDONED CONDUIT AND WIRING TO UNIT LABEL AS SPACE.
- 2 REMOVE IN ENTIRETY LABEL FEED CIRCUIT BREAKER AS SPARE.
- 3 REMOVE EXISTING VFD IN ENTIRETY INCLUDING ASSOCIATED ELECTRICAL WORK MADE OBSOLETE BY NEW WORK. LABEL AS SPACE.
- 4 REMOVE EXISTING MOTOR FROM HVAC UNIT. PREPARE UNIT FOR NEW MOTOR FURNISHED BY T.C.C.
- 5 REMOVE EXISTING SERVICE FEEDER, FUSES, CT CABINET. COORDINATE WITH OWNER AND LOCAL UTILITY TO MINIMIZE OUTAGE.

ELECTRICAL KEY NOTES (APPLIES TO E3.1 SHEET)

- 1 INSTALL NEW FREE STANDING UNISTRUT MOUNTED VFD FURNISHED BY T.C.C. NEAR MOTOR. EXACT LOCATION TO BE VERIFY IN FIELD.
- 2 INSTALL AND CONNECT NEW HVAC UNIT MOTORS AS REQUIRED. FURNISHED BY T.C.C.
- 3 PROVIDE NEW CIRCUIT BREAKERS AS REQUIRED.
- 4 PROVIDE CIRCUITS SIZED TO MATCH EXISTING VERIFY EXACT REQUIREMENTS WITH MANUFACTURER/SUPPLIER.
- 5 PROVIDE NEW FUSED SWITCH IN MCC SIZED FOR 175 PERCENT OF MOTOR FULL LOAD AMP. TO FEED VFD FOR AHU.

ONLINE POWER RISER DIAGRAM
SCALE: NO SCALE