

All concepts, ideas, design plans and details as shown on this document are the sole property of Design Collaborative, Inc. and shall not be used for any purpose without their expressed written consent. The owner shall be permitted to retain copies for information and reference.

**Wells County Public Library**  
200 West Washington Street  
Bluffton, Indiana 46714

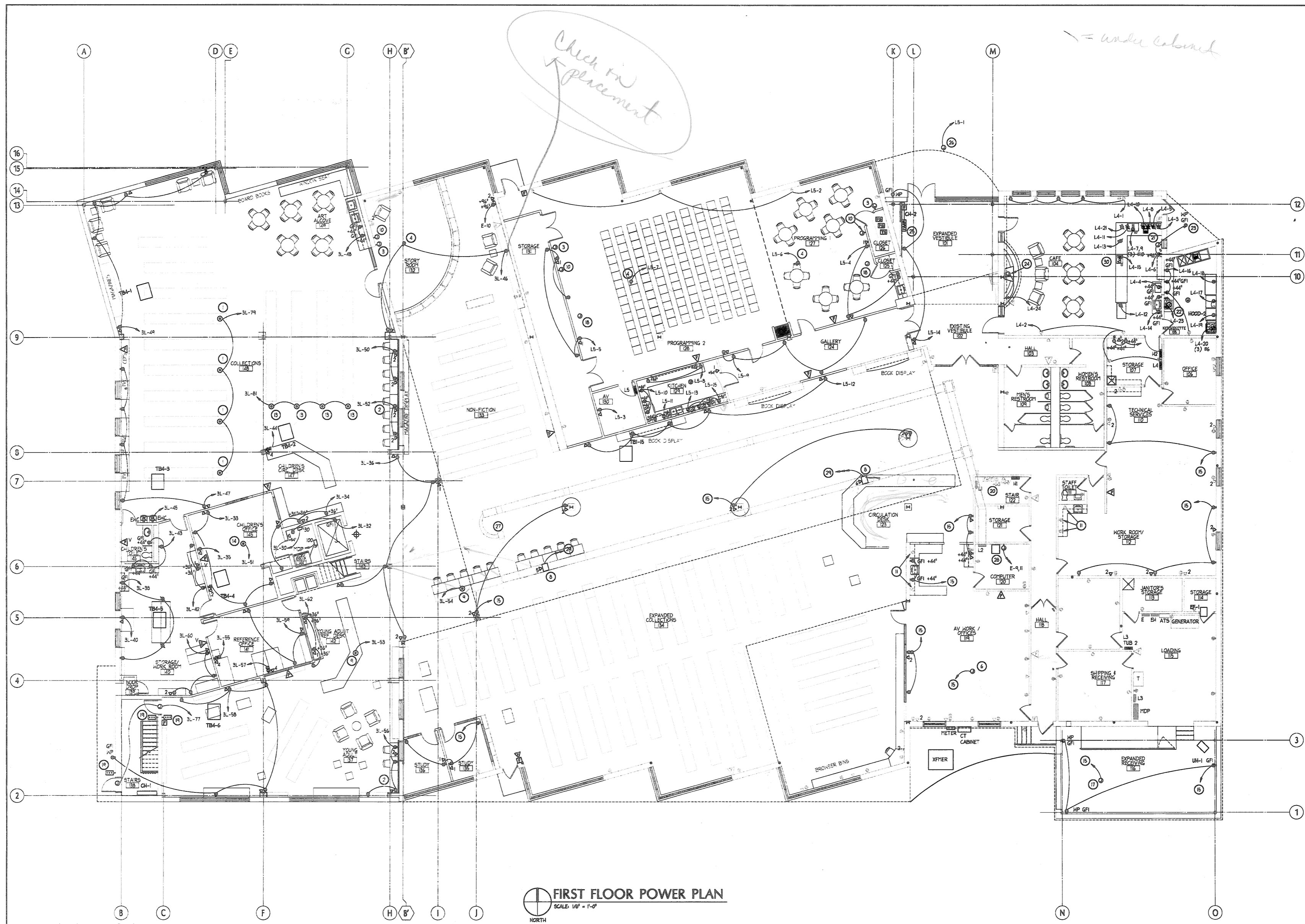


REVISION DATE BY

DATE PROJECT  
11/2/2005 2005.0039

TITLE  
First Floor Power Plan

SHEET  
E1.1



**FIRST FLOOR POWER PLAN**  
SCALE: 1/8" = 1'-0"  
NORTH

**ELECTRICAL KEY NOTES** (APPLIES TO E.I.X SHEETS)

- 1 PROVIDE FLUSH IN-FLOOR BOX, WIREMOLD RFB4, WITH (2) DUPLEX RECEPTACLES AND (1) 1" CONDUIT FOR DATA.
- 2 PROVIDE WIREMOLD SMPR #5000 SERIES, OR APPROVED EQUAL, MOUNTED AT +44" TO BOTTOM OF RACEWAY.
- 3 PROVIDE JUNCTION BOX AT STANDARD SWITCH HEIGHT FOR FUTURE PROJECTION SCREEN RAISE/LOWER CONTROLS. PROVIDE BLANK, SINGLE-GANG COVERPLATE ON JUNCTION BOX.
- 4 PROVIDE DUPLEX RECEPTACLE MOUNTED FLUSH IN CEILING PAD AS REQUIRED FOR PROJECTOR. PROJECTOR AND MOUNTING BRACKET BY OWNER.
- 5 PROVIDE JUNCTION BOX ABOVE ACCESSIBLE CEILING FOR POWER TO PROJECTION SCREEN. E.G. TO MOUNT REMOVED FLUSH-IN-CEILING PROJECTION SCREEN AS REQUIRED. CONNECT AND CIRCUIT TO WALL CONTROLLER AS REQUIRED.
- 6 PROVIDE JUNCTION BOX ABOVE CEILING FOR POWER POLE BY OWNER. VERIFY EXACT LOCATION.
- 7 PROVIDE DATA RUG-IN AND DUPLEX RECEPTACLE ON CATWALK. COORDINATE EXACT LOCATION WITH OWNER.
- 8 CUT CONCRETE AND PROVIDE ACTIVATION KIT IN EXISTING IN-FLOOR RACEWAY. TYPE TO MATCH EXISTING. PROVIDE FINISH PLATES. FLEX CABLE AND CONNECTIONS AS REQUIRED TO CASEWORK BY OTHERS.
- 9 PROVIDE FLUSH IN-FLOOR BOX, WIREMOLD RFB4, WITH (2) DUPLEX RECEPTACLES AND (2) 1" CONDUITS WITH (4) DATA CABLES BACK TO RACK IN WIRING CLOSET #23.
- 10 PROVIDE JUNCTION BOX WITH (2) 1" CONDUITS TO ABOVE ACCESSIBLE CEILING FOR FUTURE ANY CABLING BY OWNER. PROVIDE BLANK 2-GANG COVERPLATE ON JUNCTION BOX.
- 11 PROVIDE GF RECEPTACLE IF EXISTING DEVICE IS NOT ALREADY.
- 12 PROVIDE WIREMOLD RC9 SERIES POKE-THRU, OR APPROVED EQUAL, WITH (1) QUADPLEX RECEPTACLE, (4) DATA CONNECTIONS AND BLACK FLANGE FINISH.
- 13 PROVIDE FLUSH IN-FLOOR BOX, WIREMOLD RFB4, WITH (2) DUPLEX RECEPTACLES AND (1) 1" CONDUIT WITH (1) DATA CABLE BACK TO RACK IN WIRING CLOSET #23.
- 14 PROVIDE FLUSH IN-FLOOR BOX, WIREMOLD RFB4, WITH (2) DUPLEX RECEPTACLES AND (1) 1" CONDUIT WITH (2) DATA CABLES BACK TO RACK IN WIRING CLOSET #23.
- 15 CIRCUIT TO SPARE BREAKER IN CLOSET PANEL L1 OR L3.
- 16 PROVIDE DUPLEX RECEPTACLE FOR EMPLOYEE TIME CLOCK. VERIFY MOUNTING HEIGHT AND REQUIREMENTS PRIOR TO ROUGH-IN.
- 17 PROVIDE JUNCTION BOX FOR POWER TO OVERHEAD DOOR. CIRCUIT AS SHOWN.
- 18 PROVIDE JUNCTION BOX ABOVE ACCESSIBLE CEILING FOR POWER TO FUTURE PROJECTION SCREEN.
- 19 PROVIDE JUNCTION BOX ABOVE CEILING FOR POWERED DOOR LOCKS BY DOOR HARDWARE SUPPLIER. CONNECT TO CIRCUIT SHOWN.
- 20 EXPAND EXISTING SIMPLEX FIRE ALARM CONTROL PANEL AS REQUIRED FOR FIRE ALARM DEVICES IN BUILDING ADDITION.
- 21 JUNCTION BOX MOUNTED BELOW WINDOW FOR POWER TO WINDOW. CONNECT AS REQUIRED. VERIFY REQUIREMENTS WITH WINDOW SUPPLIER.
- 22 ELECTRICAL CONTRACTOR TO PROVIDE GROUND AND PLUG CONNECTION FOR GARBAGE DISPOSER. CONNECT THRU 20A SWAP SWITCH ABOVE COUNTER TO CIRCUIT SHOWN.
- 23 PROVIDE DUPLEX RECEPTACLE IN SOFFIT WITH ARLINGTON FLUSH WEATHERPROOF IN-USE RECESSED BACKBOX AND COVER.
- 24 CONNECT FIREPLACE AS REQUIRED. COORDINATE LOCATION OF CONTROL SWITCH WITH ARCHITECT.
- 25 ADD ALTERNATE E-2. PROVIDE FIRE ALARM ANNUNCIATOR PANEL IN LOCATION SHOWN. CONNECT ANNUNCIATOR PANEL TO FIRE ALARM CONTROL PANEL IN STAIR #22 AS REQUIRED.
- 26 PROVIDE JUNCTION BOX WITH WEATHERPROOF COVER FOR SIGNAGE. VERIFY EXACT LOCATION PRIOR TO ROUGH-IN.
- 27 PROVIDE BLANK COVER FOR EXISTING FLOOR BOX.
- 28 EQUIPMENT RACK BY ELECTRICAL OR TELECOM CONTRACTOR.
- 29 CIRCUIT TO SPARE BREAKER IN PANEL L2.
- 30 COORDINATE EXACT CASE WORK RECEPTACLE LOCATION IN FIELD WITH EQUIPMENT AND GROUND LOCATION.