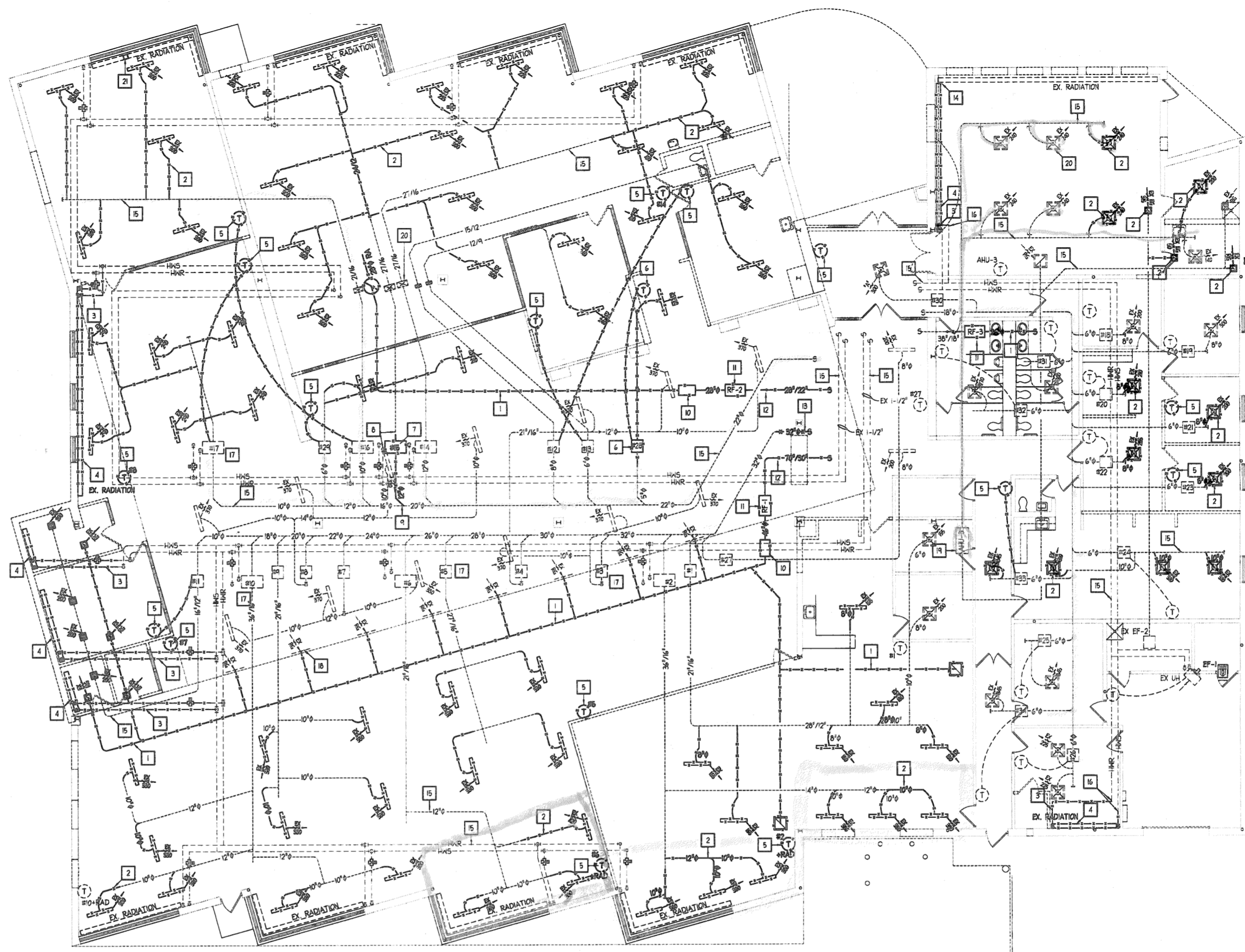


DEMOLITION NOTES

- 1 REMOVE THE RETURN AIR DUCTWORK THAT IS SHOWN WITH AN 'X' THRU IT. THE REVOLVED SYSTEM SHALL BE A PLENUM RETURN. CONTRACTOR MAY AT THEIR DISCRETION REUSE THE SPIRAL DUCTWORK IN THE NEW CONSTRUCTION AFTER WIPING THE ENTIRE INTERIOR CLEAN. TYPICAL.
- 2 REMOVE THE DUCTWORK, GRILLS AND DIFFUSERS THAT ARE SHOWN WITH AN 'X' THRU THEM AND PREPARE FOR NEW DUCTWORK CONNECTIONS PER THE CONSTRUCTION PLANS. TYPICAL.
- 3 REMOVE THE HYDRONIC HEATING LINES AND ACCESSORIES THAT ARE SHOWN WITH AN 'X' THRU THEM. CAP THE ENDS OF THE REMAINING HYDRONIC LINES AND INSULATE THEM PER THE SPECIFICATIONS.
- 4 REMOVE THE EXISTING HYDRONIC FIN TUBE RADIATION AND ENCLOSURE THAT IS SHOWN WITH AN 'X' THRU THEM.
- 5 CAREFULLY REMOVE THE EXISTING THERMOSTAT THAT IS MARKED WITH AN 'X' THRU THEM. PREPARE THESE THERMOSTATS FOR RELOCATION PER THE CONSTRUCTION PLANS. INSTALL A BLANK STAINLESS STEEL COVER OVER THE JUNCTION BOX IN WALLS THAT ARE REMAINING. TYPICAL.
- 6 CAREFULLY REMOVE THE EXISTING THERMOSTAT AND TERMINAL BOX THAT IS MARKED WITH AN 'X' THRU THEM. TURN OVER THE TERMINAL BOXES AND THERMOSTATS TO THE LIBRARY FOR FUTURE REUSE. REMOVE THE DEVICES FROM THE CONTROL LOGIC AND REDRAW THE CONTROL DRAWINGS FOR RESUBMITTAL WITH THE O&M MANUALS.
- 7 CAREFULLY REMOVE THE EXISTING TERMINAL BOX THAT IS MARKED WITH AN 'X' THRU IT AND PREPARE DUCTWORK FOR RECONNECTION OF A NEW TERMINAL UNIT. TURN OVER THE TERMINAL BOX TO THE LIBRARY FOR FUTURE REUSE.
- 8 PREPARE THE DUCTWORK AND HYDRONIC PIPING FOR RECONNECTION INTO A NEW TERMINAL BOX. SEE CONSTRUCTION PLANS FOR ADDITIONAL INFORMATION.
- 9 REMOVE THE 1/2" TAP FROM THE PRIMARY SUPPLY DUCT AND PREPARE FOR A NEW 1/4" CONNECTION. SEE CONSTRUCTION PLANS FOR ADDITIONAL INFORMATION.
- 10 REMOVE THE SOUND TRAPS IN THEIR ENTIRETY. TYPICAL.
- 11 REMOVE THE RETURN FANS IN THEIR ENTIRETY INCLUDING ALL CONTROLS. REMOVE THE DEVICES FROM THE CONTROL LOGIC AND REDRAW THE CONTROL DRAWINGS FOR RECONSTRUCTION WITH THE O&M MANUALS. EC TO REMOVE ALL POWER CONDUITS AND WIRING BACK TO THE POWER PANELS AND REMOVE THE VFD AND LABEL BREAKER AS 'SPARE'.
- 12 THE CONTRACTOR SHALL CAREFULLY REMOVE THE SHOWN RETURN DUCTWORK AND FIRE DAMPER AT THE WALL OF THE MECHANICAL ROOM. CAREFULLY CUT AWAY WALL TO ALLOW AN INCREASE IN THE RETURN AIR OPENING PER THE CONSTRUCTION PLANS.
- 13 THE CONTRACTOR SHALL CAREFULLY REMOVE THE SHOWN SUPPLY DUCTWORK AND FIRE DAMPER AT THE WALL OF THE MECHANICAL ROOM. CAREFULLY CUT AWAY WALL TO ALLOW AN INCREASE IN THE SUPPLY AIR OPENING AND A SMOOTHER TRANSITION IN THE PENTHOUSE MECHANICAL ROOM PER THE CONSTRUCTION PLANS.
- 14 CAREFULLY PREPARE THE END OF THE FIN-TUBE ELEMENT AND ENCLOSURE FOR A NEW ENDCAP FOR THE ENCLOSURE AND RECONNECTION INTO THE HYDRONIC SYSTEM. SEE CONSTRUCTION PLANS FOR ADDITIONAL INFORMATION.
- 15 THE EXISTING 'LIGHTLY DASHED' DUCTWORK AND HYDRONIC LINES THAT DO NOT HAVE 'X' THRU THEM ARE TO REMAIN OPERATIONAL AT PROJECT COMPLETION. TYPICAL.
- 16 PREPARE THE EXISTING HYDRONIC HEATING LINE FOR REROUTING TO THE NEW UNIT HEATER. SEE CONSTRUCTION PLANS FOR ADDITIONAL INFORMATION.
- 17 EXISTING TERMINAL BOXES TO REMAIN OPERATIONAL AT PROJECT COMPLETION. SEE CONSTRUCTION PLANS FOR ADDITIONAL INFORMATION.
- 18 EXISTING RETURN GRILLS TO REMAIN OPERATIONAL WITH THE EXCEPTION THE GRILLS DO NOT HAVE CAPTIVE RETURN DUCTWORK ATTACHED.
- 19 THE EXISTING AHU-3 HEAT PUMP SHALL REMAIN OPERATIONAL AT PROJECT COMPLETION.
- 20 ALL EXISTING DUCTWORK DROPS TO REMAIN ARE SHOWN AS EXISTING 'EX'.
- 21 REMOVE AND CUT THE ENCLOSURE COVER TO ALLOW NEW HALL TO ROUTE THRU THE COVER. REINSTALL THE COVER AFTER NEW HALL IS INSTALLED. PROVIDE NEW ENDCAPS ON ENCLOSURE COVER.



FIRST FLOOR MECHANICAL DEMOLITION PLAN
SCALE: 1/8" = 1'-0"
NORTH



CERTIFICATION
TERRENCE J. WAGNER
REGISTERED PROFESSIONAL ENGINEER
No. 20707
STATE OF INDIANA
Terrence Wagner
All concepts, ideas, designs, plans and details as shown on this document are the sole property of Design Collaborative, Inc. and shall not be used for any purpose without their expressed written consent. The owner shall be permitted to retain copies for information and reference.

Wells County Public Library
200 West Washington Street
Bluffton, Indiana 46714



REVISION DATE BY

DATE PROJECT
11/2/2005 2005.0039

TITLE
First Floor
Mechanical Demolition
Plan & Notes
SHEET

MD1.1