

All concepts, ideas, designs, plans and details as shown on this document are the sole property of Design Collaborative, Inc. and shall not be used for any purpose without their expressed written consent. The owner shall be permitted to retain copies for information and reference.

Wells County Public Library
 200 West Washington Street
 Bluffton, Indiana 46714



REVISION DATE BY

DATE PROJECT
11/2/2005 2005.0039

TITLE SHEET
Enlarged Details
A6.2

WALL SECTION & DETAIL NOTES

REV. 1 - GENERAL REMARKS

- (1-1) REMOVE EXISTING STANDING SEAM METAL ROOF AS REQUIRED AND PROVIDE NEW METAL STUD OVERSHEATH FOR NEW HP ROOF. SEE STRUCTURAL DRAWINGS AND ROOF PLAN FOR ADDITIONAL INFORMATION.
- (1-2) REMOVE EXISTING BRICK VENEER AND STUD MALL AS REQUIRED.
- (1-3) REMOVE EXISTING ALUMINUM DOORS, FRAME, AND GLAZING.
- (1-4) GRIND EXISTING CONCRETE SLAB AS REQUIRED FOR INSTALLATION OF NEW RECESSED HALL-OFF MAT.
- (1-5) REMOVE EXISTING HALL-OFF MAT.

REV. 2 - SITE

- (2-1) FINISHED GRADE, SLOPE AWAY FROM STRUCTURE. TYP.
- (2-2) COMPACTED ENGINEERED FILL OR UNDISTURBED SOIL.
- (2-3) REINFORCED CONCRETE SIDEWALK, SEE CIVIL DRAWINGS.

REV. 3 - CONCRETE

- (3-1) CONCRETE FOUNDATION, SEE STRUCTURAL.
- (3-2) 4" REINFORCED CONCRETE SLAB, SEE STRUCTURAL.
- (3-3) 1/2" EXPANSION JOINT & SEALANT.
- (3-4) 5 MIL PLASTIC VAPOR BARRIER WITH TAPED JOINTS.
- (3-5) 4" COMPACTED GRANULAR FILL.
- (3-6) 2" RIGID PERIMETER INSULATION BOARD TO BOTTOM OF FOUNDATION WALL. EXTEND MIN. 2'-0" HORIZONTALLY UNDERNEATH SLAB.
- (3-7) 3" REINFORCED CONCRETE SLAB OVER METAL DECK, SEE STRUCTURAL.
- (3-8) REINFORCED CONCRETE CURB, SEE CIVIL DRAWINGS.
- (3-9) DOWEL NEW SLAB INTO EXISTING CONCRETE, SEE STRUCTURAL.

REV. 4 - MASONRY

- (4-1) UTILITY BRICK VENEER.
- (4-2) 4" LIMESTONE VENEER.
- (4-3) 7-5/8" x 3-5/8" CONTINUOUS LIMESTONE ACCENT BAND.
- (4-4) UTILITY BRICK VENEER SOLDIER COURSE, SOLID BRICK.
- (4-5) EXISTING ENGRAVED LETTERING IN LIMESTONE.
- (4-6) CONTINUOUS PORTLAND NET WITH DOWEL TYP.
- (4-7) 3 CL. LAMINATED COPPER THRU-WALL FLASHING 1/4" SIZES, OVER BED OF PORTLAND. EXTEND FLASHING 1/2" UP WALL SHEATHING AND PROVIDE CONTINUOUS TERMINATION BAR AND SEALANT. LAP AIR INFILTRATION BARRIERS 6" OVER FLASHING. EXTEND FLASHING 1" BEYOND FACE OF MASONRY AND HSB EDGE.

- (4-8) MASONRY VENTS IN HEAD JOINTS @ 24" O.C. MAX.

REV. 5 - METALS

- (5-1) STEEL BEAM, SEE STRUCTURAL.
- (5-2) STEEL COLUMN, SEE STRUCTURAL.
- (5-3) STEEL JOIST, SEE STRUCTURAL.
- (5-4) 6" @ 6 GA. STEEL STUDS @ 18" O.C.
- (5-5) PREFINISHED METAL MECHANICAL LOUVER.
- (5-6) METAL ROOF DECK, SEE STRUCTURAL.
- (5-7) 1-1/2" STEEL GUARDRAIL, SEE FLOOR PLAN.
- (5-8) 3-5/8" @ 6 GA. STEEL STUDS @ 18" O.C.
- (5-9) 1-1/2" STEEL FLOORING @ 18" O.C.
- (5-10) GUARDRAIL, SEE SECTION II - THIS SHEET.

REV. 6 - WOOD & PLASTER

- (6-1) 2x WOOD BLOCKING.
- (6-2) 2x WOOD BLOCKING, TREATED.
- (6-3) STAINED WOOD HALL CAP, SEE TYPICAL DETAIL.
- (6-4) NOT USED.
- (6-5) PLASTIC LAMINATE WINDOW STOOL.

REV. 7 - THERMAL & VENTILATION PROTECTION

- (7-1) CONTINUOUS SEALANT, TYPICAL.
- (7-2) CONTINUOUS BACKER ROD AND SEALANT, TYPICAL.
- (7-3) BATT INSULATION (R-19 MIN).
- (7-4) RIGID INSULATION (R-26 MIN).
- (7-5) 10 MIL PLASTIC VAPOR BARRIER ON HARRY SIDE OF INSULATION. OVERLAP ALL EDGES BY TWO STUDS OR TRUSSES MINIMUM AND TAPE ALL JOINTS.
- (7-6) 4" FIBER CANT.

- (7-7) SNOW AND ICE SHIELD MEMBRANE. PROVIDE FULL LENGTH AT ALL WALLS AND RAKES. PROVIDE AT ALL EAVES (UP THE ROOF TO A POINT 3/4" MIN. PAST THE INSIDE SURFACE OF THE WALL). SEE ROOF PLAN.

- (7-8) PREFINISHED .050 ALUMINUM FASCIA WRAP.

- (7-9) PREFINISHED .052 ALUMINUM GUTTER & ACCESSORIES, MATCH EXISTING.

- (7-10) PREFINISHED PERFORATED OR ALUMINUM SOFFIT PANEL SYSTEM.

- (7-11) PREFINISHED 2" ALUMINUM DRIP EDGE.

- (7-12) 1" RIGID INSULATION.

- (7-13) 1/2" DEBS GLASS GOLD SHEATHING.

- (7-14) AIR INFILTRATION BARRIER, SEE SPECIFICATIONS.

- (7-15) BUILT-UP ROOF, SEE SPECIFICATIONS.

- (7-16) PREFINISHED ALUMINUM COPING SYSTEM, SEE SPECIFICATIONS.

- (7-17) PREFINISHED ALUMINUM STANDING SEAM METAL ROOF, SEE SPECIFICATIONS.

- (7-18) EXISTING MEMBRANE ROOF.

- (7-19) 1-1/2" EPS TO MATCH EXISTING LIMESTONE.

- (7-20) PREFINISHED ALUMINUM FLASHING.

- (7-21) 2 PRICE ALUMINUM COUNTER FLASHING.

- (7-22) 30# FELT UNDERLAYMENT.

- (7-23) EXTEND BITUMENS FLASHING MATERIALS UP TO TOP OF PARAPET AND ANCHOR.

- (7-24) EXTEND NEW MEMBRANE FLASHING 6" MIN. UP BEYOND EPS AND 6" MIN. DOWN OVER EXISTING MEMBRANE.

- (7-25) PROVIDE THREE STANDARD RAISE HALL J CLOSURE AT LAST METAL PANEL.

REV. 8 - DOORS & WINDOWS

- (8-1) THERMALLY BROKEN ALUMINUM CURTAINWALL SYSTEM. PROVIDE CONTINUOUS BACKER ROD & SEALANT @ INTERIOR & EXTERIOR PERIMETER, TYPICAL.

- (8-2) THERMALLY BROKEN ALUMINUM DOOR & FRAME SYSTEM. PROVIDE CONTINUOUS BACKER ROD & SEALANT @ INTERIOR & EXTERIOR PERIMETER, TYPICAL.

- (8-3) GLAZING, SEE FRAME ELEVATIONS FOR ADDITIONAL INFORMATION.

- (8-4) PREFINISHED ALUMINUM SLOPING SIGHTGLASS SYSTEM.

- (8-5) PROVIDE OPaque FEEL & STICK VINYL COVERING ON INSIDE FACE OF GLAZING, THIS ROOM.

- (8-6) PROVIDE INTERMEDIATE BRACING FOR CURTAINWALL AT SECOND FLOOR.

REV. 9 - FINISH

- (9-1) 5/8" GYPSUM BOARD, PAINTED TO 6" ABOVE SUSPENDED CEILING, WHERE APPLICABLE. SEE FINISH SCHEDULE.

- (9-2) WALL BASE, SEE FINISH SCHEDULE.

- (9-3) SUSPENDED ACOUSTICAL CEILING SYSTEM. SEE REFLECTED CEILING PLAN.

- (9-4) GYPSUM BOARD JAMB WRAP, PAINTED (BEYOND).

- (9-5) 1/2" TACKABLE WALL COVERING.

- (9-6) RECESSED HALL-OFF MAT. SEE FINISH SCHEDULE FOR ADDITIONAL INFORMATION.

REV. 10 - SPECIALTIES

- (10-1) CASEWORK, SEE FLOOR PLAN AND CASEWORK ELEVATIONS.

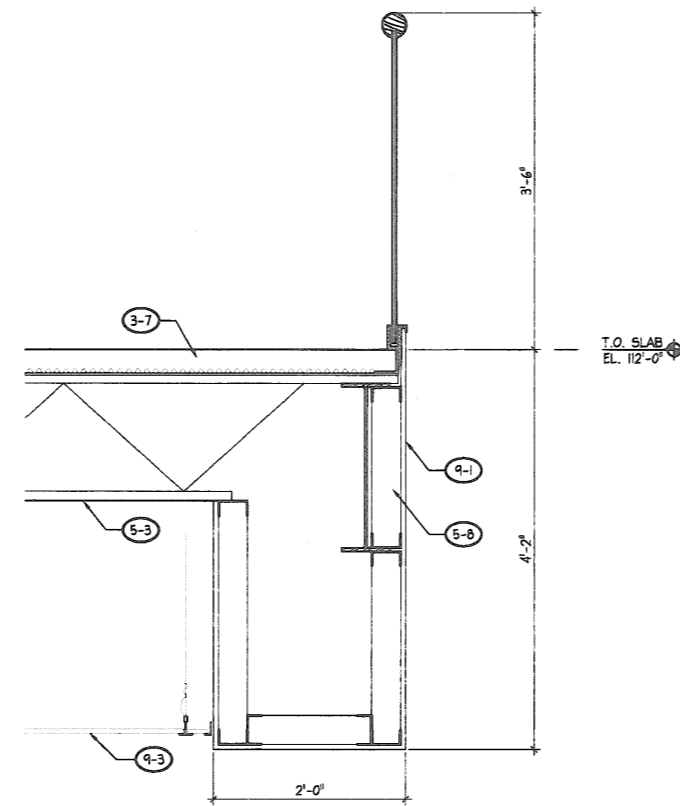
REV. 11 - PAINTING

- (11-1) GENERAL PAINTING/PAINT

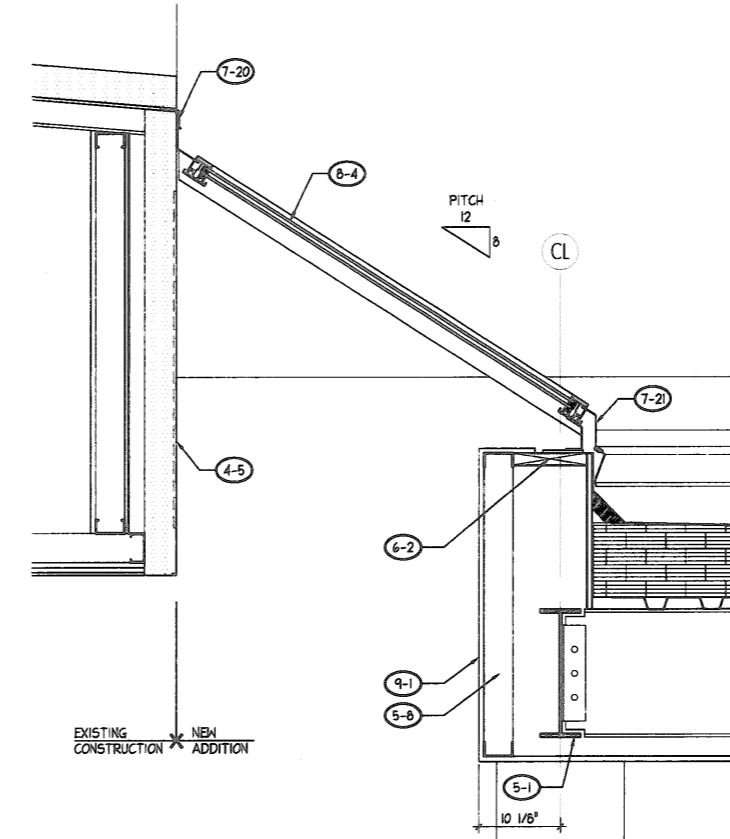
- (11-2) CEILING SYSTEMS

- (11-3) MECHANICAL

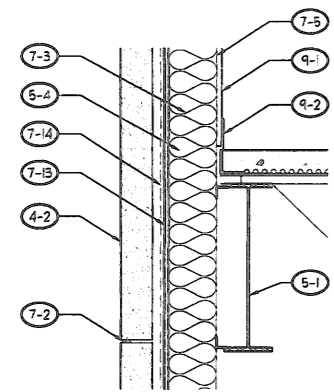
- (11-4) ELECTRICAL



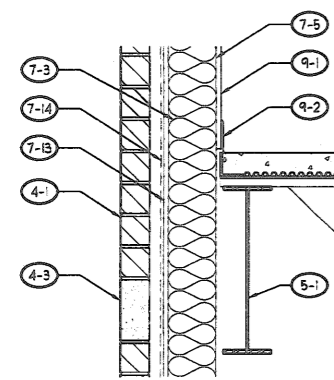
4 HANDRAIL SECTION DETAIL
SCALE: 1" = 1'-0"



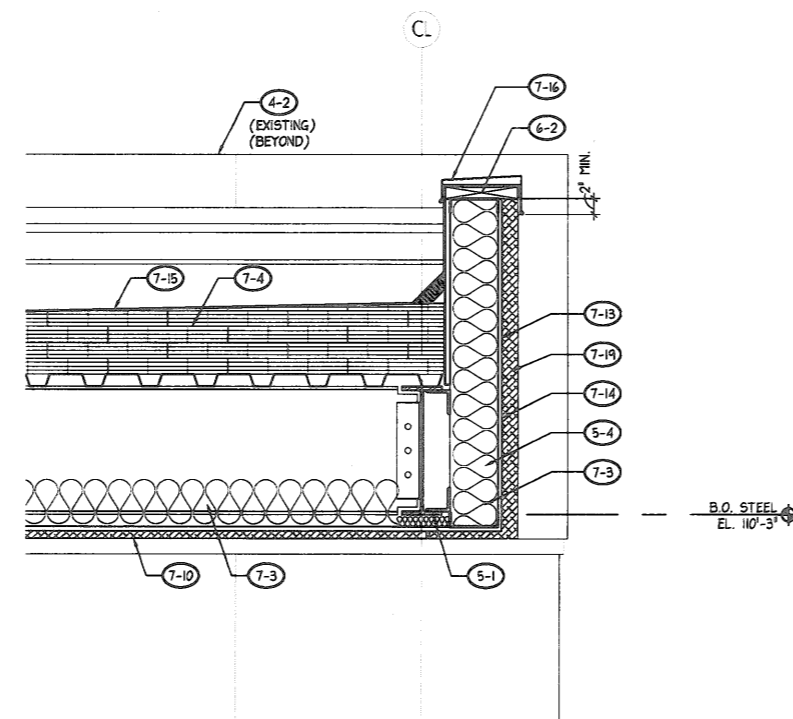
2 SECTION DETAIL
SCALE: 1" = 1'-0"



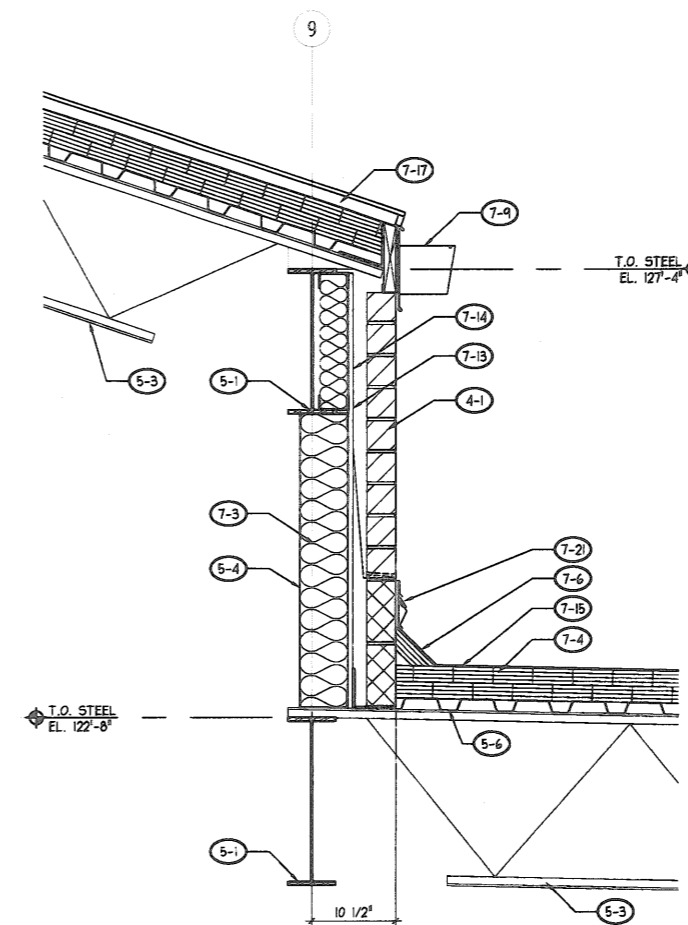
6 SECTION DETAIL
SCALE: 1" = 1'-0"



5 SECTION DETAIL
SCALE: 1" = 1'-0"



3 SECTION DETAIL
SCALE: 1" = 1'-0"



1 SECTION DETAIL
SCALE: 1" = 1'-0"