



CERTIFICATION
PAUL J. PICA
REGISTERED PROFESSIONAL ENGINEER
STATE OF INDIANA
LICENSE NO. 4447
ARCHITECT

All concepts, ideas, designs, plans and details as shown on this document are the sole property of Design Collaborative, Inc. and shall not be used for any purpose without their expressed written consent. The owner shall be permitted to retain copies for information and reference.

Wells County Public Library
 200 West Washington Street
 Bluffton, Indiana 46714



REVISION _____ DATE _____ BY _____

DATE: 11/2/2005 PROJECT: 2005.0039

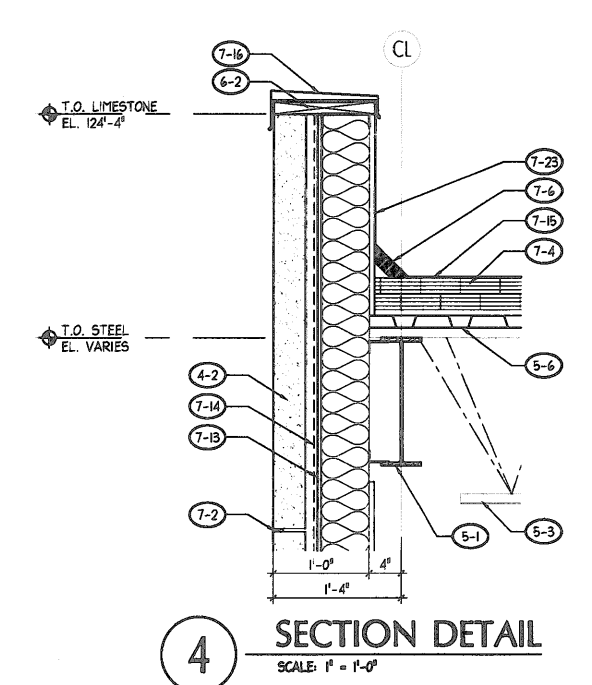
Enlarged Details

SHEET _____

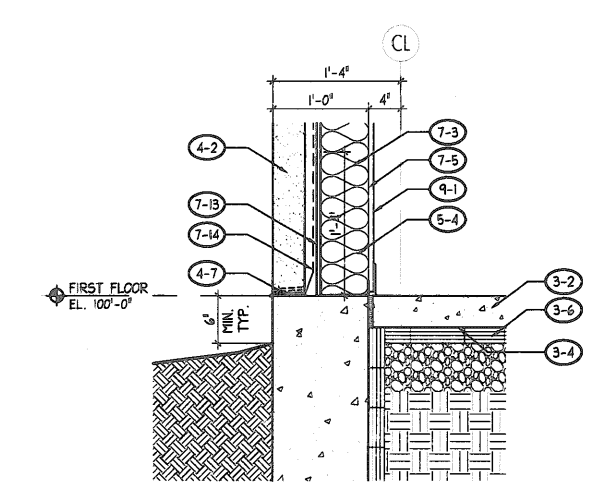
A6.1

WALL SECTION & DETAIL NOTES

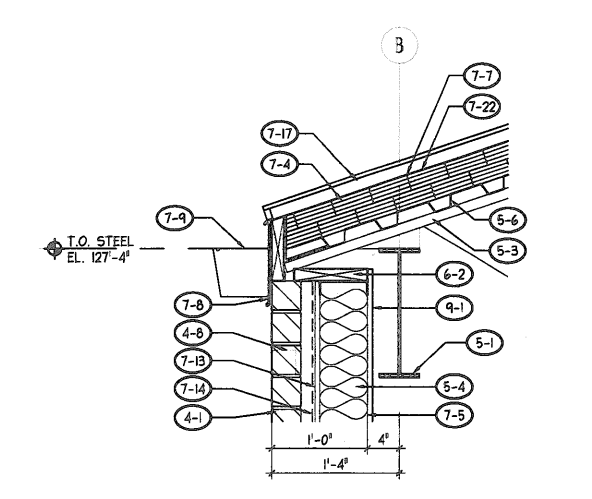
- REV. 1 - GENERAL REQUIREMENTS**
- (1-1) REMOVE EXISTING STANDING SEAM METAL ROOF AS REQUIRED AND PROVIDE NEW METAL STUD OVERBUILD FOR NEW HSB ROOF. SEE STRUCTURAL DRAWINGS AND ROOF PLAN FOR ADDITIONAL INFORMATION.
 - (1-2) REMOVE EXISTING BRICK VENEER AND STUD WALL AS REQUIRED.
 - (1-3) REMOVE EXISTING ALUMINUM DOORS, FRAME, AND GLAZING.
 - (1-4) GRIND EXISTING CONCRETE SLAB AS REQUIRED FOR INSTALLATION OF NEW RECESSED WALK-OFF MAT.
 - (1-5) REMOVE EXISTING WALK-OFF MAT.
- REV. 2 - SITE**
- (2-1) FINISHED GRADE, SLOPE AWAY FROM STRUCTURE. TYP.
 - (2-2) COMPACTED ENGINEERED FILL OR UNDISTURBED SOIL.
 - (2-3) REINFORCED CONCRETE SIDEWALK, SEE CIVIL DRAWINGS.
- REV. 3 - CONCRETE**
- (3-1) CONCRETE FOUNDATION, SEE STRUCTURAL.
 - (3-2) 4" REINFORCED CONCRETE SLAB, SEE STRUCTURAL.
 - (3-3) 1/2" EXPANSION JOINT & SEALANT.
 - (3-4) 15 MIL PLASTIC VAPOR BARRIER WITH TAPED JOINTS.
 - (3-5) 4" COMPACTED GRANULAR FILL.
 - (3-6) 2" RIGID PERIMETER INSULATION BOARD TO BOTTOM OF FOUNDATION WALL. EXTEND 2'-0" HORIZONTALLY UNDER SLAB.
 - (3-7) 3" REINFORCED CONCRETE SLAB OVER METAL DECK, SEE STRUCTURAL.
 - (3-8) REINFORCED CONCRETE CURB, SEE CIVIL DRAWINGS.
 - (3-9) DOUBLE HSB SLAB INTO EXISTING CONCRETE, SEE STRUCTURAL.
- REV. 4 - MASONRY**
- (4-1) UTILITY BRICK VENEER.
 - (4-2) 4" LIMESTONE VENEER.
 - (4-3) 1-4/8" x 3-5/8" CONTINUOUS LIMESTONE ACCENT BAND.
 - (4-4) UTILITY BRICK VENEER SOLIDER COURSE, SOLID BRICK.
 - (4-5) EXISTING ENGRAVED LETTERING IN LIMESTONE.
 - (4-6) CONTINUOUS MORTAR NET WITH DOVETAIL TOP.
 - (4-7) 5 CG. LAMPINATED COPPER THRU-WALL FLASHING W/ KEEPS, OVER SID OF PORTAL. EXTEND FLASHING UP UP WALL SUBSTRATE AND PROVIDE CONTINUOUS TERMINATION BAR AND SEALANT. LAP AIR INFILTRATION BARRIER 6" MIN OVER FLASHING. EXTEND FLASHING 1" BEYOND FACE OF MASONRY AND 1/2" EDGE.
 - (4-8) MASONRY VENTS IN HEAD JOINTS @ 24" O.C. MAX.
- REV. 5 - METALS**
- (5-1) STEEL BEAM, SEE STRUCTURAL.
 - (5-2) STEEL COLUMN, SEE STRUCTURAL.
 - (5-3) STEEL JOIST, SEE STRUCTURAL.
 - (5-4) 6" B GA. STEEL STUDS @ 16" O.C.
 - (5-5) PREFINISHED METAL MECHANICAL LOUVER.
 - (5-6) METAL ROOF DECK, SEE STRUCTURAL.
 - (5-7) 1-1/2" STEEL GUARDRAIL, SEE FLOOR PLAN.
 - (5-8) 3-5/8" x 20 GA. STEEL STUDS @ 16" O.C.
 - (5-9) 1-1/2" STEEL FURRING @ 16" O.C.
 - (5-10) GUARDRAIL, SEE SECTION #1 - THIS SHEET.
- REV. 6 - WOOD & PLASTIC**
- (6-1) 2x HOOD BLOCKING.
 - (6-2) 2x HOOD BLOCKING, TREATED.
 - (6-3) STAINED WOOD HALL CAP, SEE TYPICAL DETAIL.
 - (6-4) NOT USED.
 - (6-5) PLASTIC LAMINATE WOODEN STOOL.
- REV. 7 - THERMAL & VAPOR PROTECTION**
- (7-1) CONTINUOUS SEALANT, TYPICAL.
 - (7-2) CONTINUOUS BACKER ROD AND SEALANT, TYPICAL.
 - (7-3) BATT INSULATION (R-19 MIN).
 - (7-4) RIGID INSULATION (R-25 MIN).
 - (7-5) 10 MIL PLASTIC VAPOR BARRIER ON HARRY SIDE OF INSULATION. OVERLAP ALL EDGES BY TWO STUDS OR TRUSSES POINTS AND TAKE ALL JOINTS.
 - (7-6) 4" FIBER CANT.
 - (7-7) SIXX AND ICE SHIELD MEMBRANE. PROVIDE FULL LENGTH AT ALL VALLEYS AND RAKES. PROVIDE AT ALL SAVED UP THE ROOF TO A ROOF 6" MIN PAST THE INSIDE SURFACE OF THE WALL. SEE ROOF PLAN.
 - (7-8) PREFINISHED .050 ALUMINUM FASMA WRAP.
 - (7-9) PREFINISHED .032 ALUMINUM GUTTER & ACCESSORIES, MATCH EXISTING.
 - (7-10) PREFINISHED PERFORATED .018 ALUMINUM SOFFIT PANEL SYSTEM.
 - (7-11) PREFINISHED 2" ALUMINUM DRIP EDGE.
 - (7-12) 2" RIGID INSULATION.
 - (7-13) 1/2" DENS GLASS GOLD SHEATHING.
 - (7-14) AIR INFILTRATION BARRIER, SEE SPECIFICATIONS.
 - (7-15) BUILT-UP ROOF, SEE SPECIFICATIONS.
 - (7-16) PREFINISHED ALUMINUM COPING SYSTEM, SEE SPECIFICATIONS.
 - (7-17) PREFINISHED ALUMINUM STANDING SEAM METAL ROOF, SEE SPECIFICATIONS.
 - (7-18) EXISTING MEMBRANE ROOF.
 - (7-19) 1-1/2" EPS TO MATCH EXISTING LIMESTONE.
 - (7-20) PREFINISHED ALUMINUM FLASHING.
 - (7-21) 2 PIECE ALUMINUM COUNTER FLASHING.
 - (7-22) 30# FELT UNDERLAYMENT.
 - (7-23) EXTEND BITUMINOUS FLASHING MATERIALS UP TO TOP OF PARAPET AND ANCHOR.
 - (7-24) EXTEND NEW MEMBRANE FLASHING 6" MIN UP BEHIND EPS AND 6" MIN DOWN OVER EXISTING MEMBRANE.
 - (7-25) PROVIDE FIBER STANDARD RAKE WALL JOINTURE AT LAST METAL PANEL.
- REV. 8 - DOORS & WINDOWS**
- (8-1) THERMALLY BROKEN ALUMINUM CURTAINWALL SYSTEM. PROVIDE CONTINUOUS BACKER ROD & SEALANT @ INTERIOR & EXTERIOR PERIMETER, TYPICAL.
 - (8-2) THERMALLY BROKEN ALUMINUM DOOR & FRAME SYSTEM. PROVIDE CONTINUOUS BACKER ROD & SEALANT @ INTERIOR & EXTERIOR PERIMETER, TYPICAL.
 - (8-3) GLAZING. SEE FRAME ELEVATIONS FOR ADDITIONAL INFORMATION.
 - (8-4) PREFINISHED ALUMINUM SLOPING SKYLIGHT SYSTEM.
 - (8-5) PROVIDE OPAQUE PEEL & STICK VINYL COVERING ON INSIDE FACE OF GLAZING, THIS ROOF.
 - (8-6) PROVIDE INTERMEDIATE BRACING FOR CURTAINWALL AT SECOND FLOOR.
- REV. 9 - FINISHES**
- (9-1) 5/8" GYPSUM BOARD, PAINTED TO 6" ABOVE SUSPENDED CEILING, WHERE APPLICABLE. SEE FINISH SCHEDULE.
 - (9-2) HALL BASE, SEE FINISH SCHEDULE.
 - (9-3) SUSPENDED ACOUSTICAL CEILING SYSTEM. SEE REFLECTED CEILING PLAN.
 - (9-4) GYPSUM BOARD JAMB WRAP, PAINTED (BEYOND).
 - (9-5) 1/2" TACKABLE WALL COVERING.
 - (9-6) RECESSED WALK-OFF MAT. SEE FINISH SCHEDULE FOR ADDITIONAL INFORMATION.
- REV. 10 - MECHANICAL**
- (10-1) CASEWORK, SEE FLOOR PLAN AND CASEWORK ELEVATIONS.
- REV. 11 - ELECTRICAL**
- (11-1) CASEWORK, SEE FLOOR PLAN AND CASEWORK ELEVATIONS.
- REV. 12 - SPECIAL CONSTRUCTION**
- (12-1) SUSPENDED ACOUSTICAL CEILING SYSTEM. SEE REFLECTED CEILING PLAN.
 - (12-2) GYPSUM BOARD JAMB WRAP, PAINTED (BEYOND).
 - (12-3) 1/2" TACKABLE WALL COVERING.
 - (12-4) RECESSED WALK-OFF MAT. SEE FINISH SCHEDULE FOR ADDITIONAL INFORMATION.
- REV. 13 - GENERAL NOTES**
- (13-1) CASEWORK, SEE FLOOR PLAN AND CASEWORK ELEVATIONS.



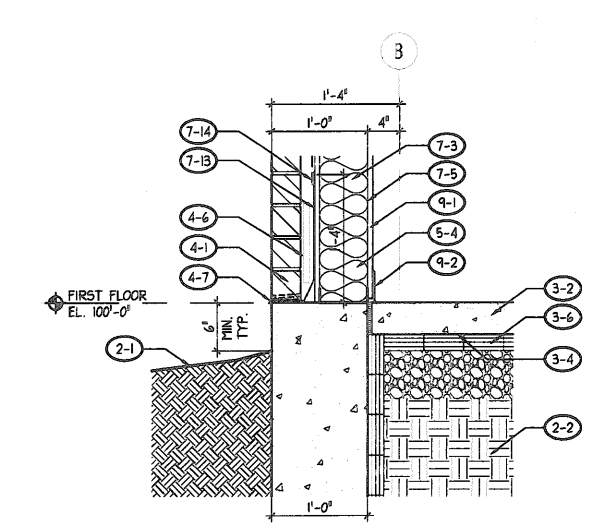
4 SECTION DETAIL
SCALE: 1" = 1'-0"



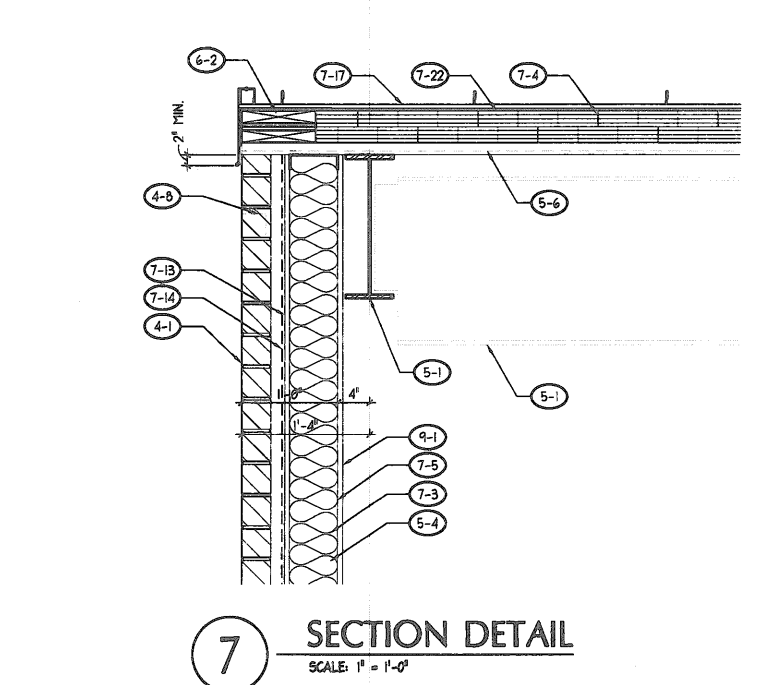
3 SECTION DETAIL
SCALE: 1" = 1'-0"



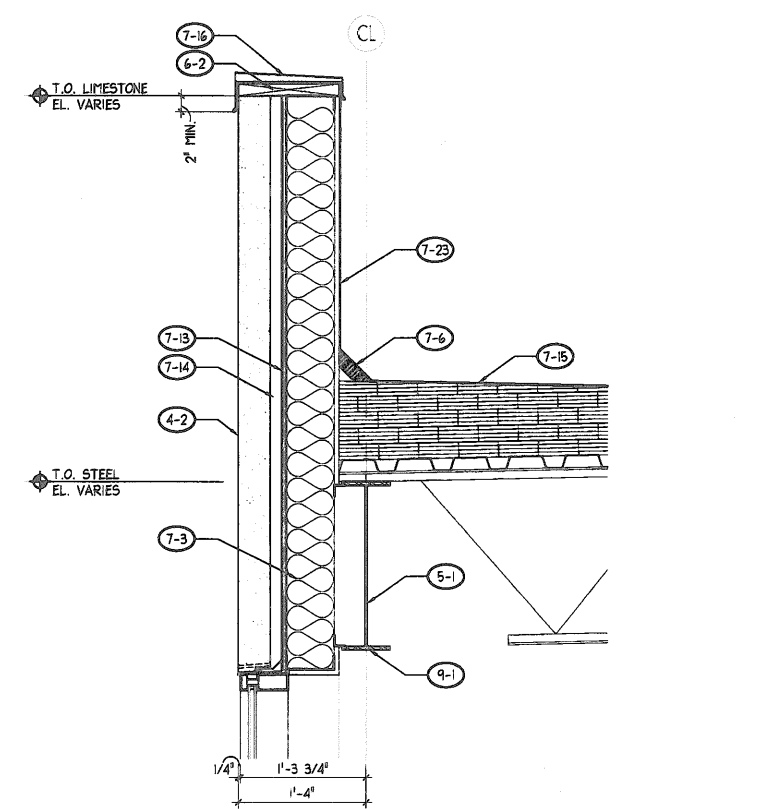
2 SECTION DETAIL
SCALE: 1" = 1'-0"



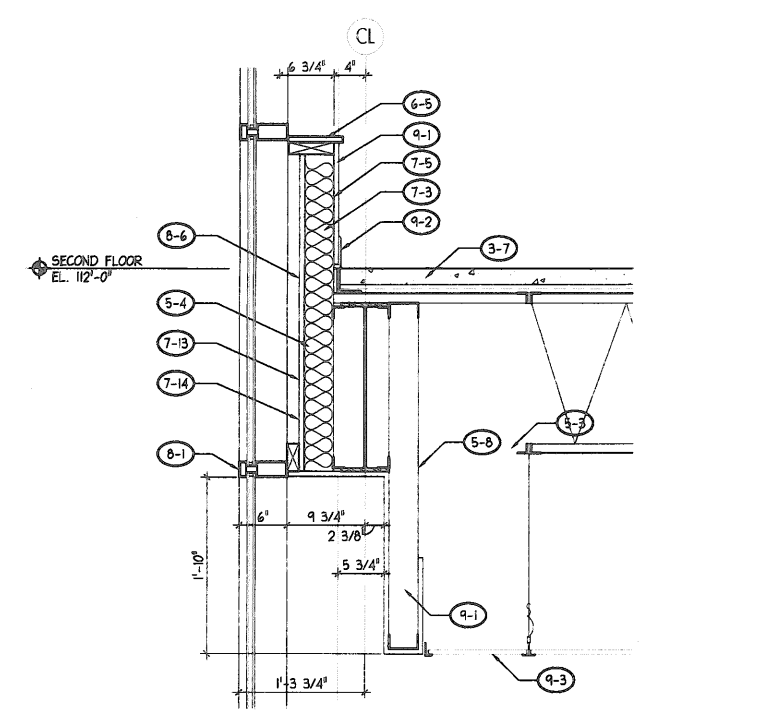
1 SECTION DETAIL
SCALE: 1" = 1'-0"



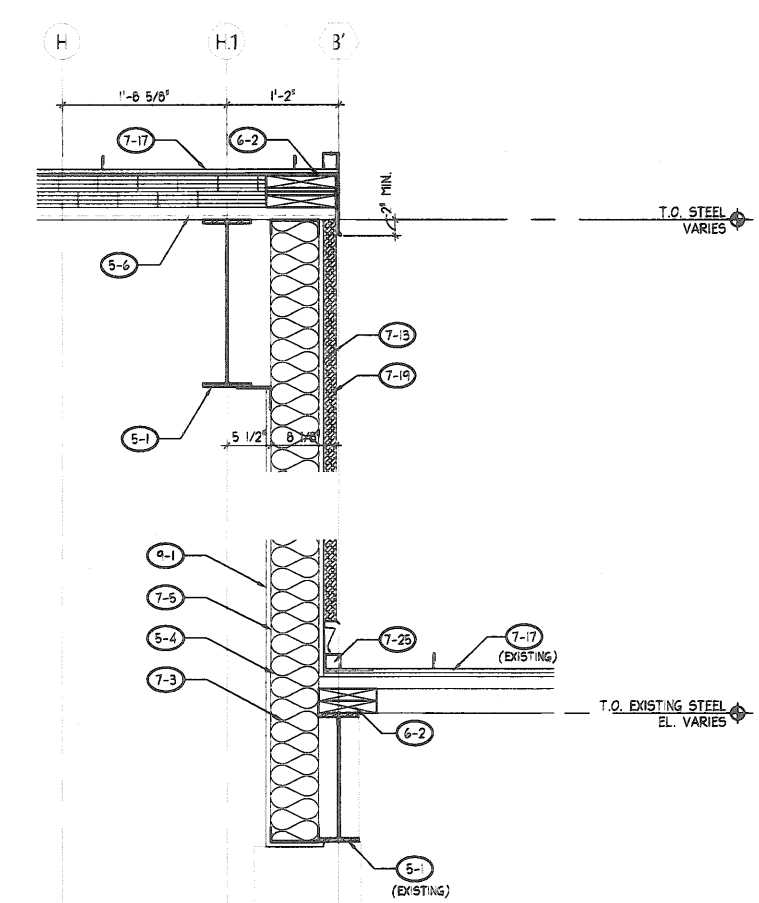
7 SECTION DETAIL
SCALE: 1" = 1'-0"



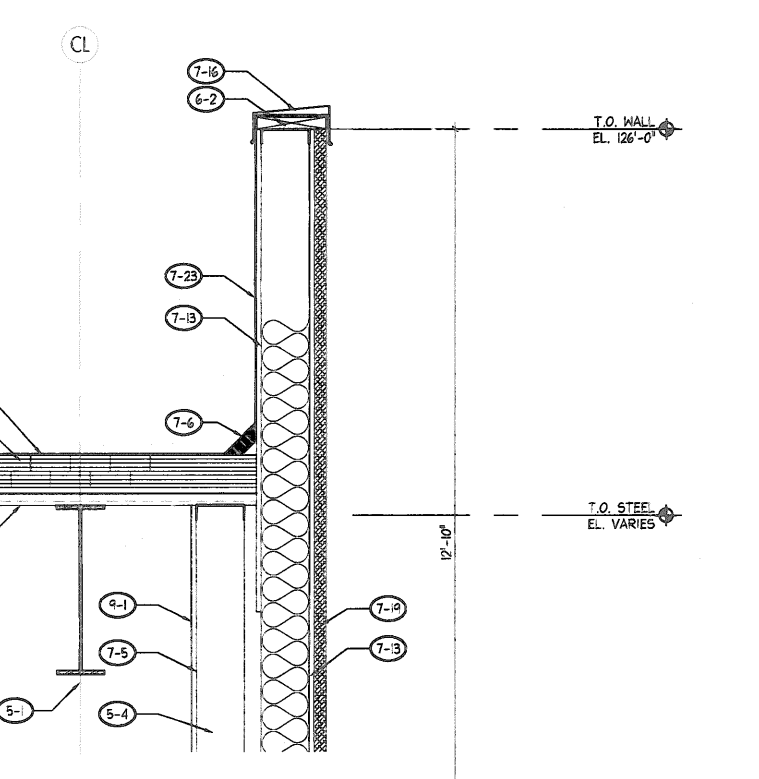
6 SECTION DETAIL
SCALE: 1" = 1'-0"



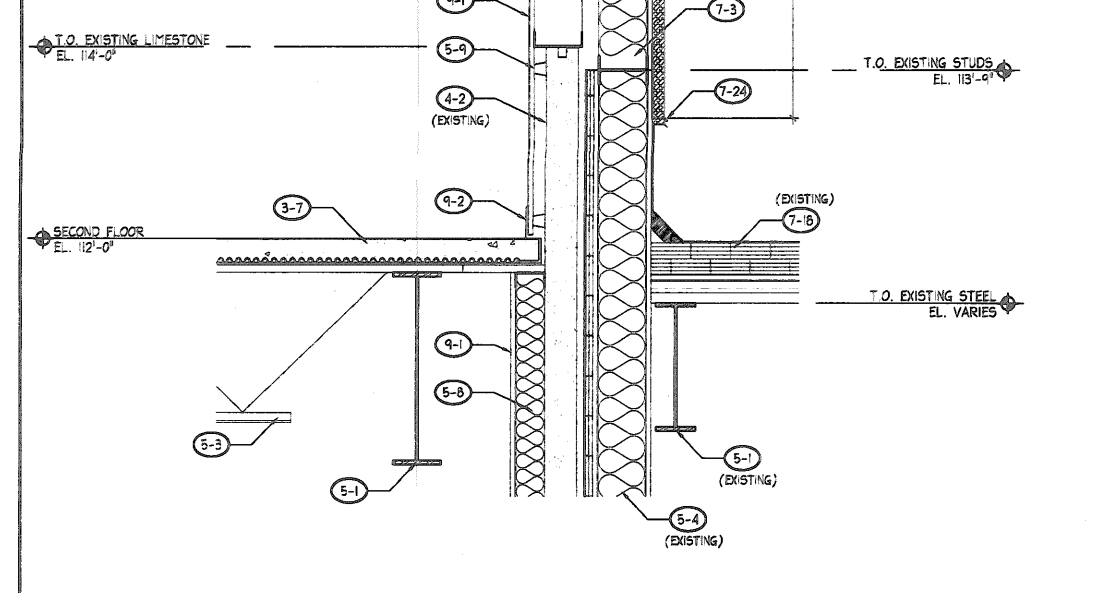
5 SECTION DETAIL
SCALE: 1" = 1'-0"



9 SECTION DETAIL
SCALE: 1" = 1'-0"



8 SECTION DETAIL
SCALE: 1" = 1'-0"



8 SECTION DETAIL
SCALE: 1" = 1'-0"