



CERTIFICATION
PAUL J. JIA
REGISTERED PROFESSIONAL ENGINEER
No. 4447
STATE OF INDIANA
ARCHITECT

All concepts, ideas, designs, plans and details as shown on this document are the sole property of Design Collaborative, Inc. and shall not be used for any purpose without their expressed written consent. The owner shall be permitted to seek copies for information and reference.

Wells County Public Library
200 West Washington Street
Bluffton, Indiana 46714



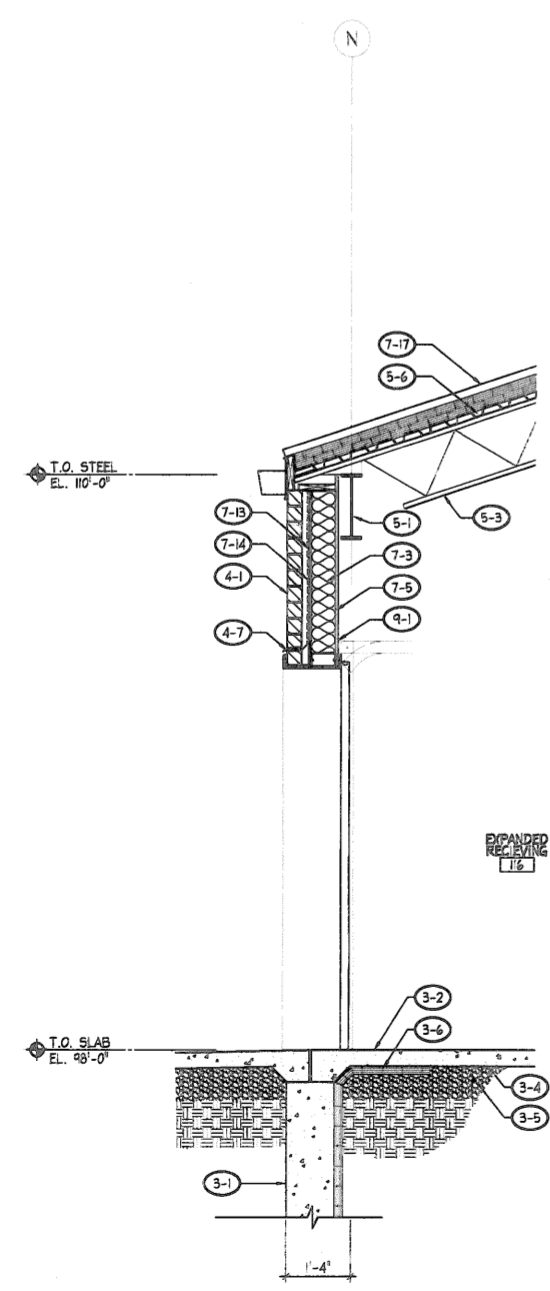
REVISION DATE BY

DATE PROJECT
11/2/2005 2005.0039

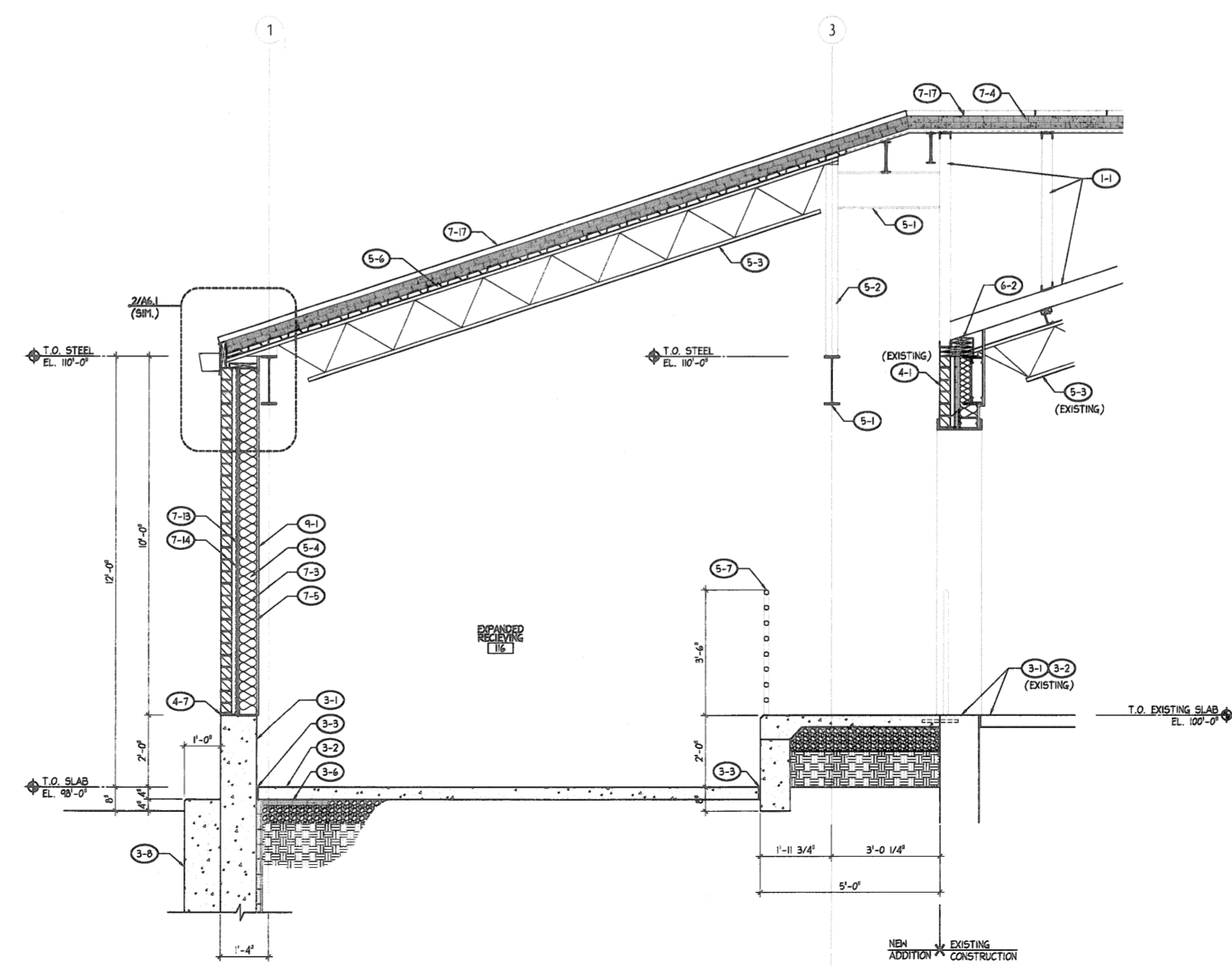
TITLE
Wall Sections
SHEET
A5.4

WALL SECTION & DETAIL NOTES

- REV. 1 - GENERAL REQUIREMENTS**
- (11) REMOVE EXISTING STANDING SEAM METAL ROOF AS REQUIRED AND PROVIDE NEW METAL STUD OVERBUILD FOR NEW HP ROOF. SEE STRUCTURAL DRAWINGS AND ROOF PLAN FOR ADDITIONAL INFORMATION.
 - (12) REMOVE EXISTING BRICK VENEER AND STUD WALL AS REQUIRED.
 - (13) REMOVE EXISTING ALUMINUM DOORS, FRAME, AND GLAZING.
 - (14) GRIND EXISTING CONCRETE SLAB AS REQUIRED FOR INSTALLATION OF NEW RECESSED WALK-OFF MAT.
 - (15) REMOVE EXISTING WALK-OFF MAT.
- REV. 2 - SITE**
- (21) FINISHED GRADE, SLOPE AWAY FROM STRUCTURE. TYP.
 - (22) COMPACTED ENGINEERED FILL OR UNDISTURBED SOIL.
 - (23) REINFORCED CONCRETE SIDEWALK, SEE CIVIL DRAWINGS.
- REV. 3 - CONCRETE**
- (31) CONCRETE FOUNDATION, SEE STRUCTURAL.
 - (32) 4" REINFORCED CONCRETE SLAB, SEE STRUCTURAL.
 - (33) 1/2" EXPANSION JOINT & SEALANT.
 - (34) 5 MIL PLASTIC VAPOR BARRIER WITH TAPED JOINTS.
 - (35) 6" COMPACTED GRANULAR FILL.
 - (36) 2" RIGID PERIMETER INSULATION BOARD TO BOTTOM OF FOUNDATION WALL. EXTEND MIN. 2'-0" HORIZONTALLY UNDER SLAB.
 - (37) 3" REINFORCED CONCRETE SLAB OVER METAL DECK, SEE STRUCTURAL.
 - (38) REINFORCED CONCRETE CURB, SEE CIVIL DRAWINGS.
 - (39) DOWEL NEW SLAB INTO EXISTING CONCRETE, SEE STRUCTURAL.
- REV. 4 - MASONRY**
- (41) UTILITY BRICK VENEER.
 - (42) 4" LIFESTONE VENEER.
 - (43) 7-5/8" x 3-5/8" CONTINUOUS LIFESTONE ACCENT BAND.
 - (44) UTILITY BRICK VENEER SOLDIER COURSE, SOLID BRICK.
 - (45) EXISTING ENGRAVED LETTERING IN LIFESTONE.
 - (46) CONTINUOUS MORTAR NET WITH DOWEL TOP.
 - (47) 5 OZ. LAMINATED COPPER THRU-WALL FLASHING w/ KEEPS, OVER BED OF PORTLAND. EXTEND FLASHING 1/2" UP WALL SHEATHING AND PROVIDE CONTINUOUS THERMALLY BROKEN SEALANT. LAP AIR INFILTRATION BARRIER IF FIN OVER FLASHING. EXTEND FLASHING 1" BEYOND FACE OF MASONRY AND HSB EDGE.
- REV. 5 - MASONRY VENTS IN HEAD JOINTS @ 24" O.C. MAX.**
- REV. 6 - METAL**
- (61) STEEL BEAM, SEE STRUCTURAL.
 - (62) STEEL COLUMN, SEE STRUCTURAL.
 - (63) STEEL JOIST, SEE STRUCTURAL.
 - (64) 1" x 3 GA. STEEL STUDS @ 12" O.C.
 - (65) PREFINISHED METAL MECHANICAL LOWER.
 - (66) METAL ROOF DECK, SEE STRUCTURAL.
 - (67) 1-1/2" STEEL GUARDRAIL, SEE FLOOR PLAN.
 - (68) 3-5/8" x 20 GA. STEEL STUDS @ 12" O.C.
 - (69) 1-1/2" STEEL FURRING @ 12" O.C.
 - (70) GUARDRAIL, SEE SECTION II - THIS SHEET.
- REV. 7 - WOOD & PLASTIC**
- (71) 2x HOOD BLOCKING.
 - (72) 2x HOOD BLOCKING, TREATED.
 - (73) STAINED WOOD WALL CAP, SEE TYPICAL DETAIL.
 - (74) NOT USED.
 - (75) PLASTIC LAMINATE WINDOW STOOL.
- REV. 8 - THERMAL & AIR CONTROL FROM EXISTING**
- (81) CONTINUOUS SEALANT, TYPICAL.
 - (82) CONTINUOUS BACKER ROD AND SEALANT, TYPICAL.
 - (83) BATT INSULATION (R-19 MIN.).
 - (84) RIGID INSULATION (R-30 MIN.).
 - (85) 10 MIL PLASTIC VAPOR BARRIER ON WARM SIDE OF INSULATION. OVERLAP ALL EDGES BY TWO STUDS OR TRUSSES MINIMUM AND TAPE ALL JOINTS.
 - (86) 4" FIBER CANT.
 - (87) SNOW AND ICE SHEILD MEMBRANE. PROVIDE FULL LENGTH AT ALL WALLS AND BASES. PROVIDE AT ALL SAWS (UP THE ROOF TO A POINT 30" MIN. PAST THE INSIDE SURFACE OF THE WALL). SEE ROOF PLAN.
 - (88) PREFINISHED .060 ALUMINUM FASCIA HORN.
 - (89) PREFINISHED .060 ALUMINUM GUTTER & ACCESSORIES, MATCH EXISTING.
 - (90) PREFINISHED PERFORATED .024 ALUMINUM SOFFIT PANEL SYSTEM.
 - (91) PREFINISHED 2" ALUMINUM DRP EDGE.
 - (92) 1" RIGID INSULATION.
 - (93) 1/2" DENS GLASS GOLD SHEATHING.
 - (94) AIR INFILTRATION BARRIER, SEE SPECIFICATIONS.
 - (95) BUILT-UP ROOF, SEE SPECIFICATIONS.
 - (96) PREFINISHED ALUMINUM CORING SYSTEM, SEE SPECIFICATIONS.
 - (97) PREFINISHED ALUMINUM STANDING SEAM METAL ROOF, SEE SPECIFICATIONS.
 - (98) EXISTING MEMBRANE ROOF.
 - (99) 1-1/2" EPS TO MATCH EXISTING LIFESTONE.
 - (100) PREFINISHED ALUMINUM FLASHING.
 - (101) 2 PIECE ALUMINUM COUNTER FLASHING.
 - (102) 30# FELT UNDERLAYMENT.
 - (103) EXTEND BITUMINOUS FLASHING MATERIALS UP TO TOP OF PARAPET AND ANCHOR.
 - (104) EXTEND NEW MEMBRANE FLASHING 6" MIN. UP BEYOND EPS AND IF FIN. DOOR OVER EXISTING MEMBRANE.
 - (105) PROVIDE HIGHER STANDARD RAKE WALL J CLOSURE AT LAST METAL PANEL.
- REV. 9 - ALUMINUM CURTAINWALL SYSTEM**
- (91) THERMALLY BROKEN ALUMINUM CURTAINWALL SYSTEM. PROVIDE CONTINUOUS BACKER ROD & SEALANT @ INTERIOR & EXTERIOR PERIMETER, TYPICAL.
 - (92) THERMALLY BROKEN ALUMINUM DOOR & FRAME SYSTEM. PROVIDE CONTINUOUS BACKER ROD & SEALANT @ INTERIOR & EXTERIOR PERIMETER, TYPICAL.
 - (93) GLAZING. SEE FRAME ELEVATIONS FOR ADDITIONAL INFORMATION.
 - (94) PREFINISHED ALUMINUM SLOPING SKYLIGHT SYSTEM.
 - (95) PROVIDE OPALQUE PEEK & STICK VINYL COVERING ON INSIDE FACE OF GLAZING, THIS ROOF.
 - (96) PROVIDE INTERMEDIATE BRACING FOR CURTAINWALL AT SECOND FLOOR.
- REV. 10 - FINISH**
- (101) 5/8" GYPSUM BOARD, PAINTED TO 1" ABOVE SUSPENDED CEILING, WHERE APPLICABLE. SEE FINISH SCHEDULE.
 - (102) WALL BASE, SEE FINISH SCHEDULE.
 - (103) SUSPENDED ACOUSTICAL CEILING SYSTEM. SEE REFLECTED CEILING PLAN.
 - (104) GYPSUM BOARD JOINT TAMP, PAINTED (BEYOND).
 - (105) 1/2" TACKABLE WALL COVERING.
 - (106) RECESSED WALK-OFF MAT. SEE FINISH SCHEDULE FOR ADDITIONAL INFORMATION.
- REV. 11 - MECHANICAL**
- (111) CASEWORK, SEE FLOOR PLAN AND CASEWORK ELEVATIONS.
- REV. 12 - ELECTRICAL**
- (121) ELECTRICAL CONSTRUCTION.
 - (122) MECHANICAL SYSTEMS.
 - (123) MECHANICAL SYSTEMS.
 - (124) ELECTRICAL.



2 WALL SECTION
SCALE: 1/2" = 1'-0"



1 WALL SECTION
SCALE: 1/2" = 1'-0"