

CERTIFICATION



All concepts, ideas, designs, plans and details as shown on this document are the sole property of Design Collaborative, Inc. and shall not be used for any purpose without their expressed written consent. The owner shall be permitted to retain copies for information and reference.

**Wells County Public Library**  
 200 West Washington Street  
 Bluffton, Indiana 46714



REVISION DATE BY

DATE PROJECT  
11/2/2005 2005.0039

Wall Sections

SHEET  
**A5.2**

**WALL SECTION & DETAIL NOTES**

**DIV. 1 - GENERAL REQUIREMENTS**

- (1-1) REMOVE EXISTING STANDING SEAM METAL ROOF AS REQUIRED AND PROVIDE NEW METAL ROOF OVERBUILD FOR NEW HP ROOF. SEE STRUCTURAL DRAWINGS AND ROOF PLAN FOR ADDITIONAL INFORMATION.
- (1-2) REMOVE EXISTING BRICK VENEER AND STUD WALL AS REQUIRED.
- (1-3) REMOVE EXISTING ALUMINUM DOORS, FRAME, AND GLAZING.
- (1-4) GRIND EXISTING CONCRETE SLAB AS REQUIRED FOR INSTALLATION OF NEW RECESSED WALK-OFF MAT.
- (1-5) REMOVE EXISTING WALK-OFF MAT.

**DIV. 2 - SITE**

- (2-1) FINISHED GRADE, SLOPE AWAY FROM STRUCTURE. TYP.
- (2-2) COMPACTED ENGINEERED FILL OR UNDISTURBED SOIL.
- (2-3) REINFORCED CONCRETE SIDEWALK, SEE CIVIL DRAWINGS.

**DIV. 3 - CONCRETE**

- (3-1) CONCRETE FOUNDATION, SEE STRUCTURAL.
- (3-2) 4" REINFORCED CONCRETE SLAB, SEE STRUCTURAL.
- (3-3) 1/2" EXPANSION JOINT & SEALANT.
- (3-4) 15 MIL PLASTIC VAPOR BARRIER WITH TAPED JOINTS.
- (3-5) 6" COMPACTED GRANULAR FILL.
- (3-6) 2" RIGID PERIMETER INSULATION BOARD TO BOTTOM OF FOUNDATION WALL. EXTEND MIN. 2'-0" HORIZONTALLY UNDERNEATH SLAB.
- (3-7) 3" REINFORCED CONCRETE SLAB OVER METAL DECK, SEE STRUCTURAL.
- (3-8) REINFORCED CONCRETE CURB, SEE CIVIL DRAWINGS.
- (3-9) DONUT NH SLAB INTO EXISTING CONCRETE, SEE STRUCTURAL.

**DIV. 4 - MASONRY**

- (4-1) UTILITY BRICK VENEER.
- (4-2) 4" LIMESTONE VENEER.
- (4-3) 7-6/8" x 3-5/8" CONTINUOUS LIMESTONE ACCENT BAND.
- (4-4) UTILITY BRICK VENEER SOLDIER COURSE, SOLID BRICK.
- (4-5) EXISTING ENGRAVED LETTERING IN LIMESTONE.
- (4-6) CONTINUOUS PORTLAND NET WITH DOWEL TIE.
- (4-7) 5 GIL LAMINATED COPPER THRU-WALL FLASHING W/ KEEPS, OVER BED OF PORTLAND. EXTEND FLASHING 1/2" UP WALL SHEATHING AND PROVIDE CONTINUOUS TERMINATION BAR AND SEALANT. LAP AIR INFILTRATION BARRIER 6" MIN OVER FLASHING. EXTEND FLASHING 7" BEYOND FACE OF MASONRY AND WEY EDGE.
- (4-8) MASONRY VENTS IN HEAD JOINTS @ 24" O.C. MAX.

**DIV. 5 - METALS**

- (5-1) STEEL BEAM, SEE STRUCTURAL.
- (5-2) STEEL COLUMN, SEE STRUCTURAL.
- (5-3) STEEL JOIST, SEE STRUCTURAL.
- (5-4) 1/2" IS GA. STEEL STUDS @ 18" O.C.
- (5-5) PREFINISHED METAL MECHANICAL LOWER.
- (5-6) METAL ROOF DECK, SEE STRUCTURAL.
- (5-7) 1-1/2" STEEL GUARDRAIL, SEE FLOOR PLAN.
- (5-8) 3-4/8" 20 GA. STEEL STUDS @ 18" O.C.
- (5-9) 1-1/2" STEEL FURRING @ 18" O.C.
- (5-10) GUARDRAIL, SEE SECTION II - THIS SHEET.

**DIV. 6 - WOOD & PLASTIC**

- (6-1) 2x HOOD BLOCKING.
- (6-2) 2x HOOD BLOCKING, TREATED.
- (6-3) STAINED HOOD WALL CAP, SEE TYPICAL DETAIL.
- (6-4) NOT USED.
- (6-5) PLASTIC LAMINATE WINDOW STOOL.

**DIV. 7 - THERMAL & AIRFLOW PERFORMANCE**

- (7-1) CONTINUOUS SEALANT, TYPICAL.
- (7-2) CONTINUOUS BACKER ROD AND SEALANT, TYPICAL.
- (7-3) BATT INSULATION (R-19 MIN.).
- (7-4) RIGID INSULATION (R-25 MIN.).
- (7-5) 10 MIL PLASTIC VAPOR BARRIER ON WARM SIDE OF INSULATION. OVERLAP ALL EDGES BY TWO STUDS OR TRUSSES PERIMETER AND TAPE ALL JOINTS.
- (7-6) 1/2" FIBER GLASS.
- (7-7) SHIM AND ICE SHIELD MEMBRANE. PROVIDE FULL LENGTH AT ALL VALLEYS AND RAKES. PROVIDE AT ALL SAWS (UP THE ROOF TO A POINT 30" MIN. PAST THE INSIDE SURFACE OF THE WALL). SEE ROOF PLAN.
- (7-8) PREFINISHED .050 ALUMINUM FASCIA WRAP.
- (7-9) PREFINISHED .050 ALUMINUM GUTTER & ACCESSORIES, MATCH EXISTING.
- (7-10) PREFINISHED PERFORATED .010 ALUMINUM SOFFIT PANEL SYSTEM.
- (7-11) PREFINISHED 2" ALUMINUM DRIP EDGE.
- (7-12) 1" RIGID INSULATION.
- (7-13) 1/2" DBS GLASS GOLD SHEATHING.
- (7-14) AIR INFILTRATION BARRIER, SEE SPECIFICATIONS.
- (7-15) BUILT-UP ROOF, SEE SPECIFICATIONS.
- (7-16) PREFINISHED ALUMINUM COPING SYSTEM, SEE SPECIFICATIONS.
- (7-17) PREFINISHED ALUMINUM STANDING SEAM METAL ROOF, SEE SPECIFICATIONS.
- (7-18) EXISTING MEMBRANE ROOF.
- (7-19) 1-1/2" EPS TO MATCH EXISTING LIMESTONE.
- (7-20) PREFINISHED ALUMINUM FLASHING.
- (7-21) 2 PLY ALUMINUM COUNTER FLASHING.
- (7-22) 50# FELT UNDERLAYMENT.
- (7-23) EXTEND BITUMINOUS FLASHING MATERIALS UP TO TOP OF PARAPET AND ANCHOR.
- (7-24) EXTEND NEW MEMBRANE FLASHING 6" MIN. UP BEHIND EPS AND 1/2" DOWN OVER EXISTING MEMBRANE.
- (7-25) PROVIDE PIGGY'S STANDARD RAKE HALL J CLOSURE AT LAST METAL PANEL.

**DIV. 8 - PARTS & FINISHES**

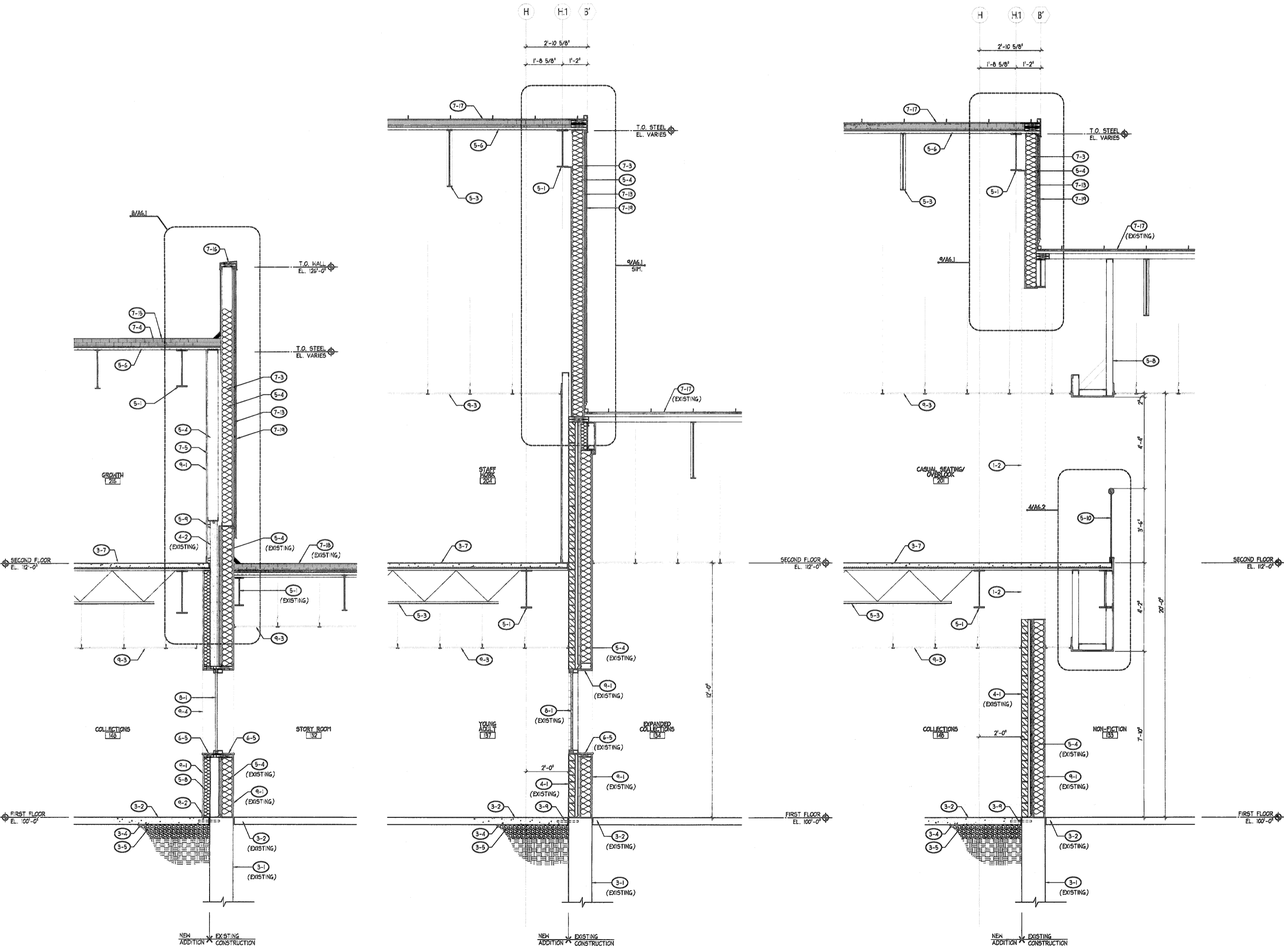
- (8-1) THERMALLY BROKEN ALUMINUM CURTAINWALL SYSTEM. PROVIDE CONTINUOUS BACKER ROD & SEALANT @ INTERIOR & EXTERIOR PERIMETER, TYPICAL.
- (8-2) THERMALLY BROKEN ALUMINUM DOOR & FRAME SYSTEM. PROVIDE CONTINUOUS BACKER ROD & SEALANT @ INTERIOR & EXTERIOR PERIMETER, TYPICAL.
- (8-3) GLAZING. SEE FRAME ELEVATIONS FOR ADDITIONAL INFORMATION.
- (8-4) PREFINISHED ALUMINUM SLOPING SKYLIGHT SYSTEM.
- (8-5) PROVIDE OPaque FEEL & STICK VINYL COVERING ON INSIDE FACE OF GLAZING. THIS ROOF.
- (8-6) PROVIDE INTERMEDIATE BRACING FOR CURTAINWALL AT SECOND FLOOR.

**DIV. 9 - FINISHES**

- (9-1) 5/8" GYPSUM BOARD, PAINTED TO 1' ABOVE SUSPENDED CEILING, WHERE APPLICABLE. SEE FINISH SCHEDULE.
- (9-2) WALL BASE, SEE FINISH SCHEDULE.
- (9-3) SUSPENDED ACOUSTICAL CEILING SYSTEM. SEE REFLECTED CEILING PLAN.
- (9-4) GYPSUM BOARD JAMB WRAP, PAINTED (BEYOND).
- (9-5) 1/2" TACKABLE WALL COVERING.
- (9-6) RECESSED WALK-OFF MAT. SEE FINISH SCHEDULE FOR ADDITIONAL INFORMATION.

**DIV. 10 - SPECIALTIES**

- (10-1) CASEWORK, SEE FLOOR PLAN AND CASEWORK ELEVATIONS.
- (10-2) SIGNAGE.
- (10-3) SPECIAL CONSTRUCTION.
- (10-4) CONCRETE SYSTEMS.
- (10-5) MECHANICAL.
- (10-6) ELECTRICAL.



**3 WALL SECTION**  
SCALE: 1/2" = 1'-0"

**2 WALL SECTION**  
SCALE: 1/2" = 1'-0"

**1 WALL SECTION**  
SCALE: 1/2" = 1'-0"