

CERTIFICATION
ROMA L.D. DICK
REGISTERED
No. 4447
STATE OF
INDIANA
ARCHITECT
Paul J. Pica
All concepts, ideas, designs, plans and details as shown on this document are the sole property of Design Collaborative, Inc. and shall not be used for any purpose without their expressed written consent. The owner shall be permitted to retain copies for information and reference.

Wells County Public Library
200 West Washington Street
Bluffton, Indiana 46714



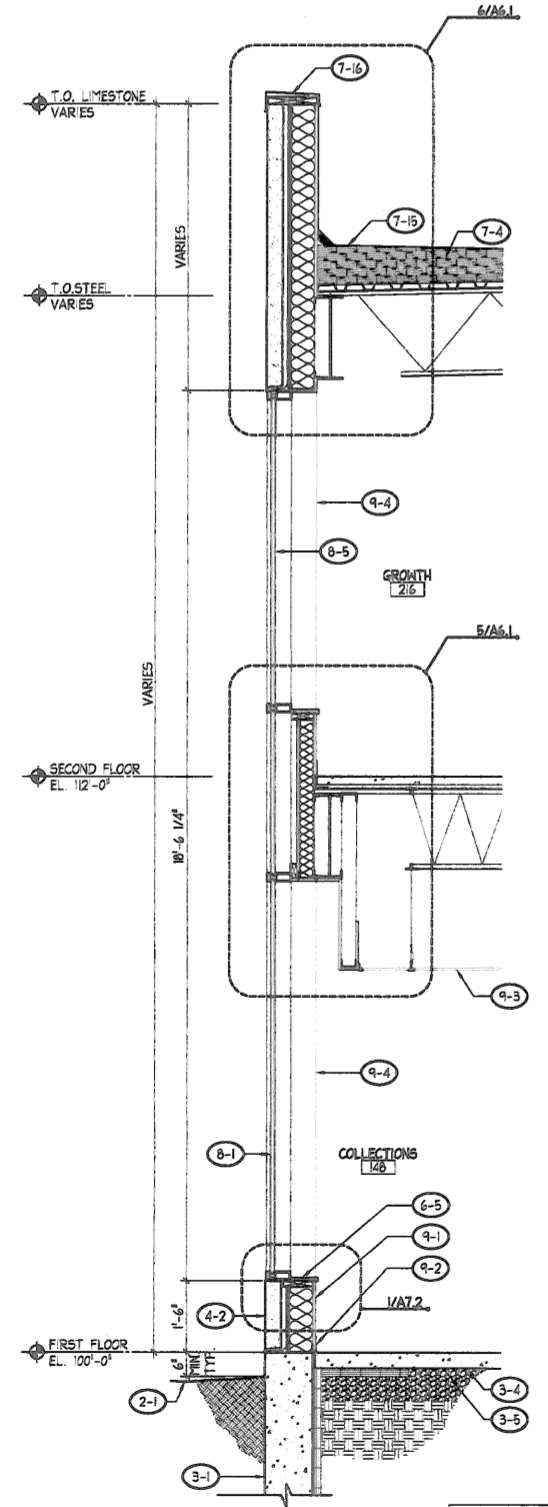
REVISION DATE BY

DATE PROJECT
11/2/2005 2005.0039

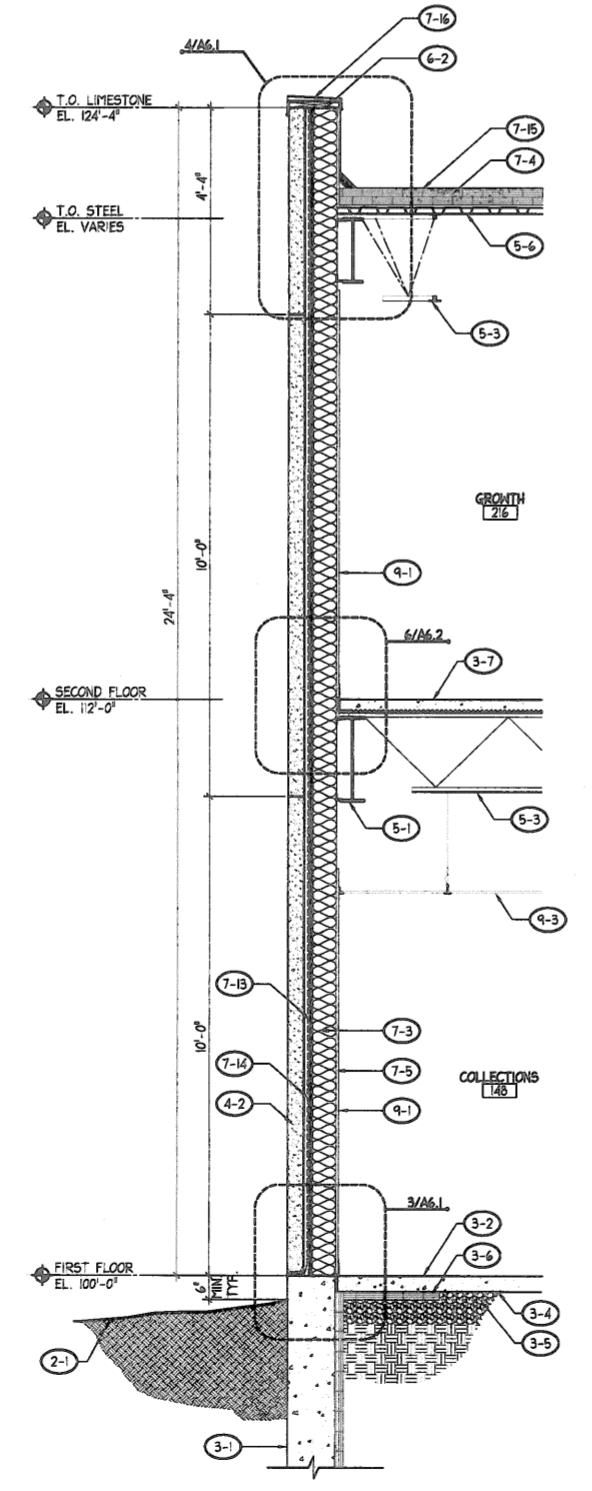
Wall Sections
SHEET
A5.1

WALL SECTION & DETAIL NOTES

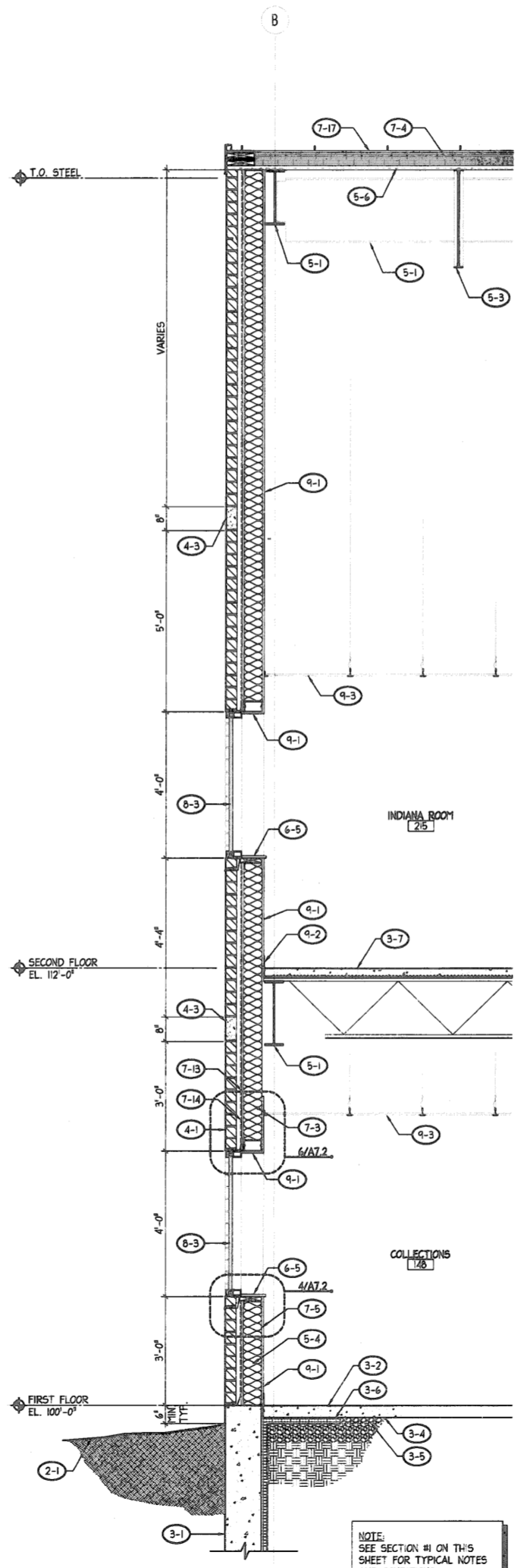
- REV. 1 - GENERAL REVISIONS**
- (1-1) REMOVE EXISTING STANDING SEAM METAL ROOF AS REQUIRED AND PROVIDE NEW METAL STUD OVERBUILD FOR NEW HP ROOF. SEE STRUCTURAL DRAWINGS AND ROOF PLAN FOR ADDITIONAL INFORMATION.
 - (1-2) REMOVE EXISTING BRICK VENEER AND STUD WALL AS REQUIRED.
 - (1-3) REMOVE EXISTING ALUMINUM DOORS, FRAME, AND GLAZING.
 - (1-4) GRIND EXISTING CONCRETE SLAB AS REQUIRED FOR INSTALLATION OF NEW RECESSED WALK-OFF MAT.
 - (1-5) REMOVE EXISTING WALK-OFF MAT.
- REV. 2 - SITE**
- (2-1) FINISHED GRADE, SLOPE AWAY FROM STRUCTURE. TYP.
 - (2-2) COMPACTED ENGINEERED FILL OR UNDISTURBED SOIL.
 - (2-3) REINFORCED CONCRETE SIDEWALK, SEE CIVIL DRAWINGS.
- REV. 3 - CONCRETE**
- (3-1) CONCRETE FOUNDATION, SEE STRUCTURAL.
 - (3-2) 4" REINFORCED CONCRETE SLAB, SEE STRUCTURAL.
 - (3-3) 1/2" EXPANSION JOINT & SEALANT.
 - (3-4) 5 MIL PLASTIC VAPOR BARRIER WITH TAPED JOINTS.
 - (3-5) 6" COMPACTED GRANULAR FILL.
 - (3-6) 2" RIGID PERIMETER INSULATION BOARD TO BOTTOM OF FOUNDATION WALL. EXTEND 2'-0" HORIZONTALLY UNDERNEATH SLAB.
 - (3-7) 3" REINFORCED CONCRETE SLAB OVER METAL DECK, SEE STRUCTURAL.
 - (3-8) REINFORCED CONCRETE CURB, SEE CIVIL DRAWINGS.
 - (3-9) DONUT NEW SLAB INTO EXISTING CONCRETE, SEE STRUCTURAL.
- REV. 4 - MASONRY**
- (4-1) UTILITY BRICK VENEER.
 - (4-2) 4" LIMESTONE VENEER.
 - (4-3) 7-5/8" x 3-5/8" CONTINUOUS LIMESTONE ACCENT BAND.
 - (4-4) UTILITY BRICK VENEER SOLDIER COURSE, SOLID BRICK.
 - (4-5) EXISTING ENGRAVED LETTERING IN LIMESTONE.
 - (4-6) CONTINUOUS MORTAR NET WITH DOWEL TOP.
 - (4-7) 5 OZ. LAMINATED COPPER THRU-WALL FLASHING w/ WEEPS, OVER BED OF PORTLAND. EXTEND FLASHING 1/2" UP WALL SHEATHING AND PROVIDE CONTINUOUS TERMINATION BAR AND SEALANT. LAP AIR INfiltration BARRIERS IF FIN OVER FLASHING. EXTEND FLASHING 1" BEYOND FACE OF MASONRY AND NEW EDGE.
 - (4-8) MASONRY VENTS IN HEAD JOINTS @ 24" O.C. MAX.
- REV. 5 - METALS**
- (5-1) STEEL BEAM, SEE STRUCTURAL.
 - (5-2) STEEL COLUMN, SEE STRUCTURAL.
 - (5-3) STEEL JOIST, SEE STRUCTURAL.
 - (5-4) 6" IS GA. STEEL STUDS @ 16" O.C.
 - (5-5) PREFINISHED METAL MECHANICAL LOWER.
 - (5-6) METAL ROOF DECK, SEE STRUCTURAL.
 - (5-7) 1-1/2" STEEL GUARDRAIL, SEE FLOOR PLAN.
 - (5-8) 3-5/8" 20 GA. STEEL STUDS @ 16" O.C.
 - (5-9) 1-1/2" STEEL FLOORING @ 16" O.C.
 - (5-10) GUARDRAIL, SEE SECTION 11 - THIS SHEET.
- REV. 6 - WOOD & PLASTER**
- (6-1) 2x WOOD BLOCKING.
 - (6-2) 2x WOOD BLOCKING, TREATED.
 - (6-3) STAINED WOOD WALL CAP, SEE TYPICAL DETAIL.
 - (6-4) NOT USED.
 - (6-5) PLASTIC LAPINATE WINDOW STOOL.
- REV. 7 - THERMAL & VENTILATION PERFORMANCE**
- (7-1) CONTINUOUS SEALANT, TYPICAL.
 - (7-2) CONTINUOUS BACKER ROD AND SEALANT, TYPICAL.
 - (7-3) BATT INSULATION (R-19 FIB.).
 - (7-4) RIGID INSULATION (R-25 FIB.).
 - (7-5) 10 MIL PLASTIC VAPOR BARRIER ON HANDED SIDE OF INSULATION. OVERLAP ALL EDGES BY TWO STUDS OR TRUSSES MINIMUM AND TAPE ALL JOINTS.
 - (7-6) 4" FIBER CANT.
 - (7-7) SNOW AND ICE SHIELD MEMBRANE. PROVIDE FULL LENGTH AT ALL WALLS AND ROOFS. PROVIDE AT ALL EAVES (UP THE ROOF TO A POINT 3/4" FIN. PART THE INSIDE SURFACE OF THE WALL). SEE ROOF PLAN.
 - (7-8) PREFINISHED .052 ALUMINUM FASCIA WRAP.
 - (7-9) PREFINISHED .052 ALUMINUM GUTTER & ACCESSORIES, MATCH EXISTING.
 - (7-10) PREFINISHED PERFORATED .074 ALUMINUM SOFFIT PANEL SYSTEM.
 - (7-11) PREFINISHED 2" ALUMINUM DRIP EDGE.
 - (7-12) 1" RIGID INSULATION.
 - (7-13) 1/2" DEB GLASS GOLD SHEATHING.
 - (7-14) AIR FILTRATION BARRIER, SEE SPECIFICATIONS.
 - (7-15) BUILT-UP ROOF, SEE SPECIFICATIONS.
 - (7-16) PREFINISHED ALUMINUM COPING SYSTEM, SEE SPECIFICATIONS.
 - (7-17) PREFINISHED ALUMINUM STANDING SEAM METAL ROOF, SEE SPECIFICATIONS.
 - (7-18) EXISTING MEMBRANE ROOF.
 - (7-19) 1-1/2" EPS TO MATCH EXISTING LIMESTONE.
 - (7-20) PREFINISHED ALUMINUM FLASHING.
 - (7-21) 2 PIECE ALUMINUM COUNTER FLASHING.
 - (7-22) 30# FELT UNDERLAYMENT.
 - (7-23) EXTEND BITUMENOUS FLASHING MATERIALS UP TO TOP OF PARAPET AND ANCHOR.
 - (7-24) EXTEND NEW MEMBRANE FLASHING @ FIN. UP BEHIND EPS AND @ FIN. DOWN OVER EXISTING MEMBRANE.
 - (7-25) PROVIDE FIBER STANDING NAUSE WALL J CLOSURE AT LAST METAL PANEL.
- REV. 8 - DOORS & WINDOWS**
- (8-1) THERMALLY BROKEN ALUMINUM CURTAINWALL SYSTEM. PROVIDE CONTINUOUS BACKER ROD & SEALANT @ INTERIOR & EXTERIOR PERIMETER, TYPICAL.
 - (8-2) THERMALLY BROKEN ALUMINUM DOOR & FRAME SYSTEM. PROVIDE CONTINUOUS BACKER ROD & SEALANT @ INTERIOR & EXTERIOR PERIMETER, TYPICAL.
 - (8-3) GLAZING. SEE FRAME ELEVATIONS FOR ADDITIONAL INFORMATION.
 - (8-4) PREFINISHED ALUMINUM SLOPING SIGHTLIT SYSTEM.
 - (8-5) PROVIDE OPaque PEEL & STICK VINYL COVERING ON INSIDE FACE OF GLAZING. THIS ROOF.
 - (8-6) PROVIDE INTERMEDIATE BRACING FOR CURTAINWALL AT SECOND FLOOR.
- REV. 9 - FINISHES**
- (9-1) 5/8" GYPSUM BOARD, PAINTED TO 6" ABOVE SUSPENDED CEILING, WHERE APPLICABLE. SEE FINISH SCHEDULE.
 - (9-2) WALL BASE, SEE FINISH SCHEDULE.
 - (9-3) SUSPENDED ACOUSTICAL CEILING SYSTEM. SEE REFLECTED CEILING PLAN.
 - (9-4) GYPSUM BOARD JAMB WRAP, PAINTED (BEYOND).
 - (9-5) 1/2" TACKABLE WALL COVERING.
 - (9-6) RECESSED WALK-OFF MAT. SEE FINISH SCHEDULE FOR ADDITIONAL INFORMATION.
- REV. 10 - SPECIALTIES**
- (10-1) CASWORK, SEE FLOOR PLAN AND CASWORK ELEVATIONS.
- REV. 11 - EQUIPMENT**
- (11-1) CASWORK, SEE FLOOR PLAN AND CASWORK ELEVATIONS.
- REV. 12 - FURNISHINGS**
- (12-1) FURNISHINGS, SEE FLOOR PLAN AND FURNISHING ELEVATIONS.
- REV. 13 - GENERAL CONSTRUCTION**
- (13-1) CONSTRUCTION, SEE SPECIFICATIONS.
- REV. 14 - MECHANICAL**
- (14-1) MECHANICAL, SEE MECHANICAL DRAWINGS.
- REV. 15 - ELECTRICAL**
- (15-1) ELECTRICAL, SEE ELECTRICAL DRAWINGS.



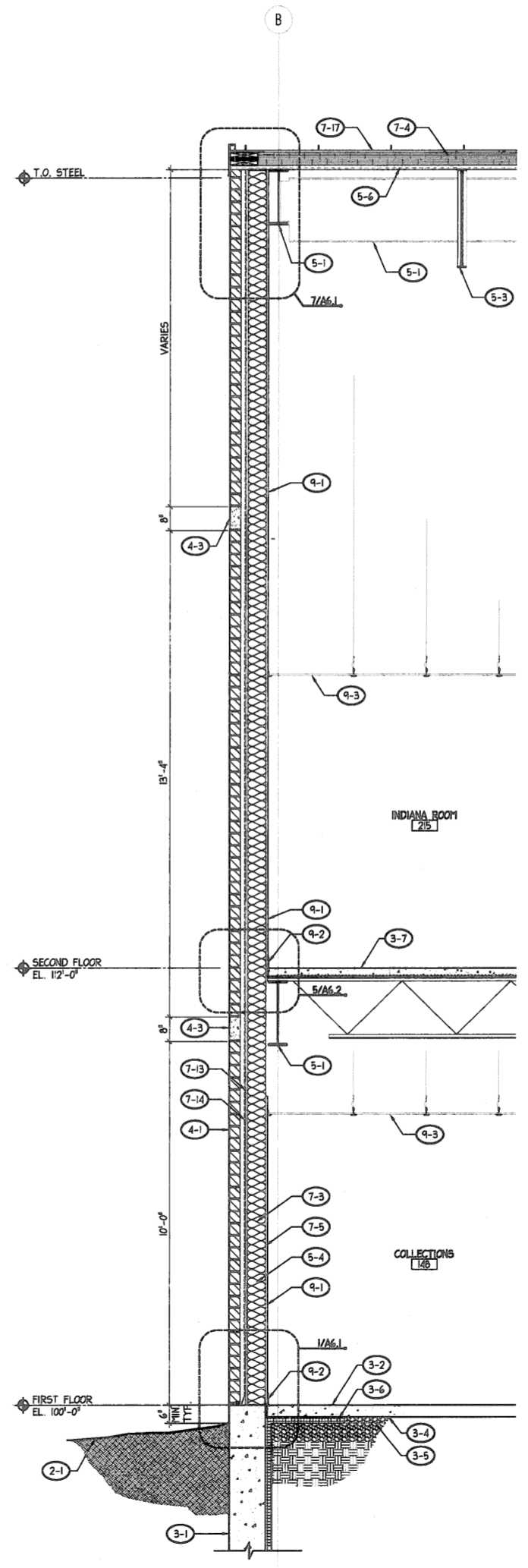
4 WALL SECTION
SCALE: 1/2" = 1'-0"



3 WALL SECTION
SCALE: 1/2" = 1'-0"



2 WALL SECTION
SCALE: 1/2" = 1'-0"



1 WALL SECTION
SCALE: 1/2" = 1'-0"

NOTE: SEE SECTION #3 ON THIS SHEET FOR TYPICAL NOTES AND CONDITIONS

NOTE: SEE SECTION #1 ON THIS SHEET FOR TYPICAL NOTES AND CONDITIONS