



CERTIFICATION
PAUL J. PICA
REGISTERED PROFESSIONAL ENGINEER
STATE OF INDIANA
LICENSE NO. 4447
ARCHITECT

Paul J. Pica

All concepts, ideas, designs, plans and details as shown on this document are the sole property of Design Collaborative, Inc. and shall not be used for any purpose without their expressed written consent. The owner shall be permitted to retain copies for information and reference.

Wells County Public Library
200 West Washington Street
Bluffton, Indiana 46714

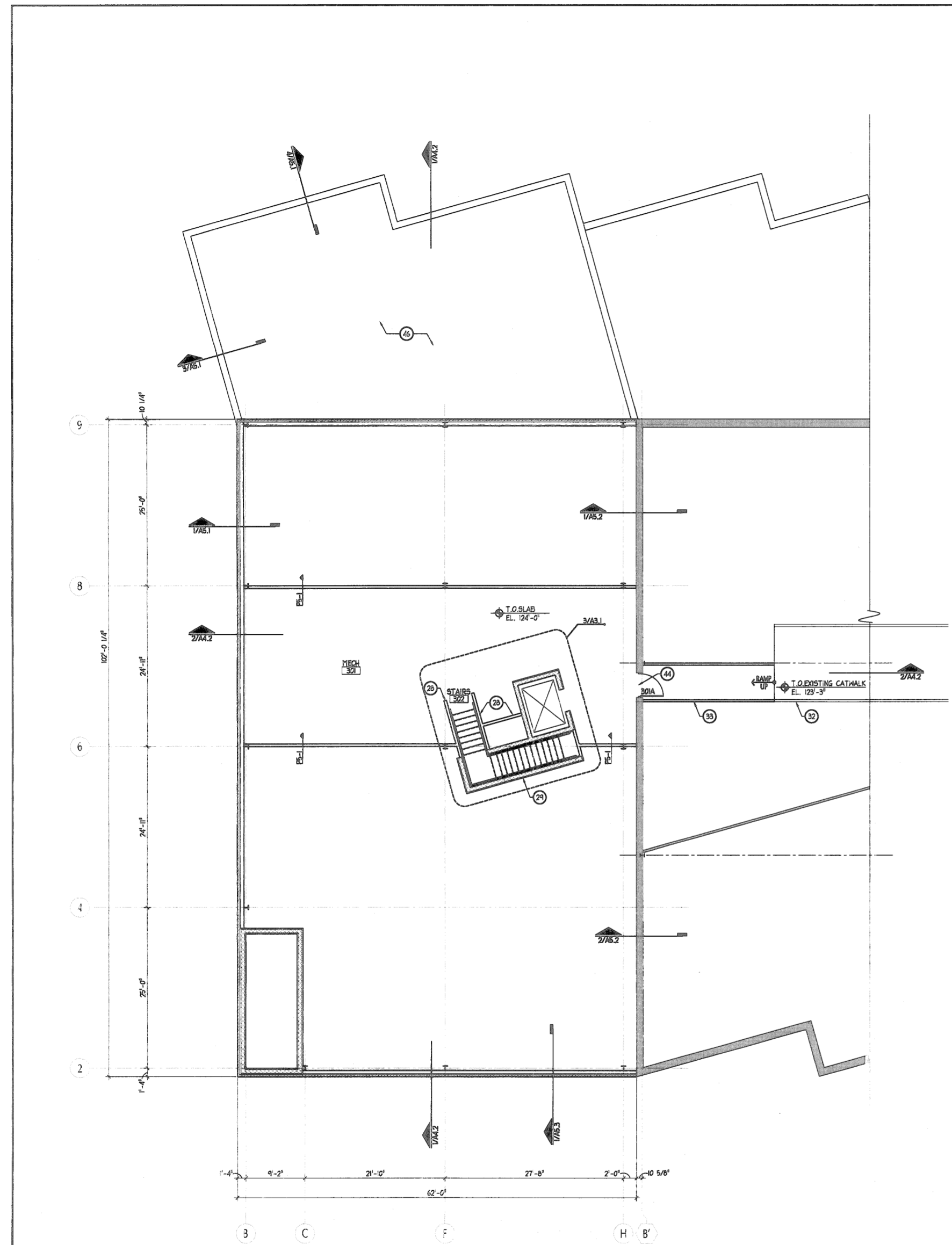


REVISION DATE BY

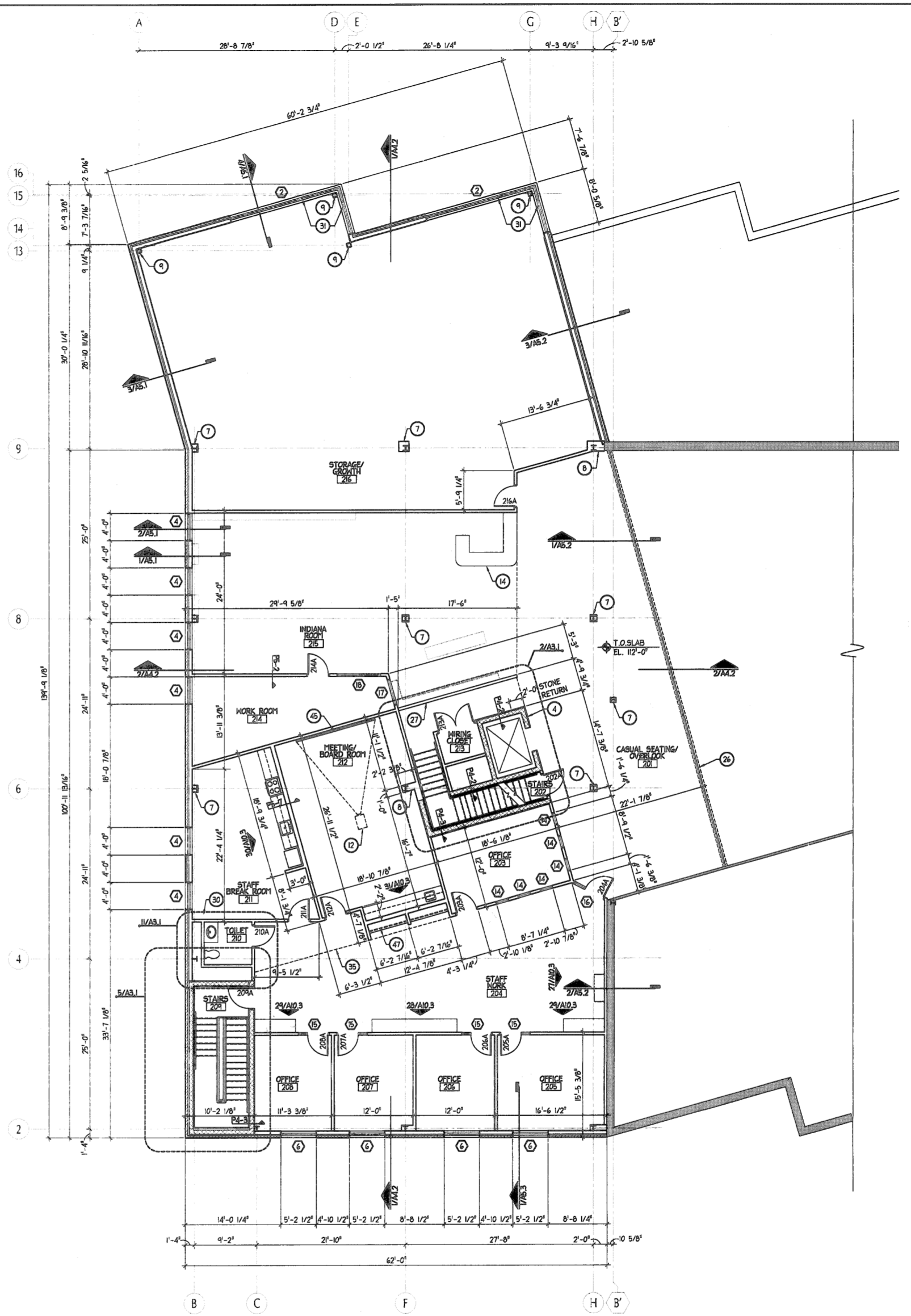
DATE PROJECT
11/2/2005 2005.0039

TITLE
Second Floor Plan and Mezzanine Floor Plan
SHEET

A12



MEZZANINE FLOOR PLAN
SCALE: 1/8" = 1'-0"
NORTH



SECOND FLOOR PLAN
SCALE: 1/8" = 1'-0"
NORTH

PLAN CONSTRUCTION NOTES

- 1 INFILL EXISTING BOOK DROP OPENING WITH BRICK VENEER AND METAL STUD / GYPSUM BOARD WALL TO MATCH EXISTING ADJACENT SURFACES.
- 2 6" PAINTED STEEL PIPE BOLLARD, PAINTED. SEE CIVIL DRAWINGS.
- 3 4" PAINTED STEEL PIPE BOLLARD, PAINTED. SEE CIVIL DRAWINGS.
- 4 PRECAST STONE VENEER OVER CMU AT ENTIRE FRONT FACE OF ELEVATOR AND 2' RETURNED AT EACH CORNER OF ELEVATOR.
- 5 PRECAST STONE VENEER OVER EXISTING TILE / NEW CEMENT BOARD. SEE INTERIOR ELEVATIONS FOR ADDITIONAL INFORMATION.
- 6 NEW BOOK DISPLAY WITH PRECAST STONE VENEER. SEE INTERIOR ELEVATIONS FOR ADDITIONAL INFORMATION.
- 7 1-1/2" Furring AND 5/8" GYPSUM BOARD COLUMN WRAP.
- 8 METAL STUD AND GYPSUM BOARD COLUMN WRAP. ALGN GYPSUM BOARD FLUSH WITH ADJACENT SURFACES, WHERE APPLICABLE.
- 9 PAINT EXPOSED TUBE STEEL COLUMN.
- 10 ELECTRIC WATER COOLER. SEE PLUMBING PLAN.
- 11 LIBRARY CART NOOK. SEE ENLARGED STAIR PLANS. CARTS BY OTHERS.
- 12 CEILING MOUNTED PROJECTOR. BY OTHERS. SEE ELECTRICAL DRAWINGS.
- 13 MAGNETIC PAINT, THIS WALL.
- 14 MODULAR CIRCULATION DESK BY OWNER. SHOWN FOR REFERENCE ONLY.
- 15 CANOPY ABOVE. SEE ROOF PLAN AND SECTIONS.
- 16 CAFE EQUIPMENT, BY OWNER. SHOWN FOR REFERENCE ONLY.
- 17 PORTION OF STEEL RAMP GUARDRAIL TO OPERATE AS GATE WITH LATCH. 3'-6" MIN. OPENING.
- 18 MEN MOP BASIN, SEE PLUMBING.
- 19 1" DEEP WIRE SHELVING ON HEAVY DUTY STANDARDS AND BRACKETS @ 32" O.C. MAX. PROVIDE 3 ROWS OF SHELVING.
- 20 1" DEEP PLASTIC LAMINATE SHELVING ON HEAVY DUTY STANDARDS AND BRACKETS @ 18" O.C. MAX. PROVIDE 5 ROWS OF SHELVING.
- 21 THREE COMPARTMENT SINK. SEE PLUMBING DRAWINGS.
- 22 INFILL EXISTING OPENING WITH METAL STUDS AND GYPSUM BOARD. FINISH FLUSH WITH ADJACENT SURFACES.
- 23 NEW 3-5/8" METAL STUD AND 5/8" DRYWALL PARTION TO 15'-6 1/2" WITH STAINED WOOD CAP. SEE INTERIOR ELEVATIONS FOR ADDITIONAL INFORMATION.
- 24 PRECAST STONE VENEER FIREPLACE WITH STONE HEARTH AND WOOD MANTLE. SEE INTERIOR ELEVATIONS FOR ADDITIONAL INFORMATION.
- 25 OVERHEAD TRACK PAIRED PANEL OPERABLE PARTITION WITH FABRIC FINISH, STC 51 MIN. PROVIDE WITH MPGRS STANDARD SELF-SUPPORTING COLUMNS AND OVERHEAD JOIST SYSTEM. GC TO PROVIDE INSULATED METAL STUD AND GYPSUM BOARD BULKHEAD FROM TOP OF JOIST SYSTEM TO DECK ABOVE.
- 26 42" GLASS GUARDRAIL WITH STAINED WOOD CAP. SEE WALL SECTIONS FOR ADDITIONAL INFORMATION.
- 27 42" 3-5/8" METAL STUD AND 5/8" GYPSUM BOARD WALL WITH STAINED WOOD CAP.
- 28 42" 3-5/8" METAL STUD AND 5/8" GYPSUM BOARD WALL WITH GYPSUM BOARD CAP.
- 29 8" CMU BLOCK WALL TO 42" ABOVE MEZZANINE FLOOR, THIS LOCATION. PROVIDE 3-5/8" METAL STUD WALL WITH 5/8" GYPSUM BOARD BOTH SIDES ON TOP OF CMU WALL TO DECK ABOVE.
- 30 RELOCATE OWNER'S EXISTING LOCKERS TO THIS LOCATION.
- 31 PROVIDE CRAPPE PEEL AND STICK VINYL COATING ON INSIDE OF GLAZING.
- 32 EXISTING CATWALK, REWORK HANDRAIL AS REQUIRED.
- 33 NEW CATWALK, SEE STRUCTURAL, PROVIDE NEW HANDRAIL TO MATCH EXISTING.
- 34 TACKABLE FABRIC SURFACE ON 3/4" PLYWOOD OVER GYPSUM BOARD, SEE SHEET A11.
- 35 LINE OF BULKHEAD, ABOVE.
- 36 EXISTING CASWORK TO REMAIN. PROTECT THROUGHOUT CONSTRUCTION.
- 37 NEW CONCRETE STEPS / RAMP / PAINTED STEEL HANDRAILS.
- 38 OVERHEAD DOOR & OPERATOR.
- 39 1" RISERS - 3/4" 1x6 PLYWOOD OVER STEEL STUD FRAMING. SEE FINISH SCHEDULE FOR ADDL INFORMATION.
- 40 COMPUTER SHELF, SEE TYPICAL DETAIL.
- 41 OVERHEAD COILING GRILL, SEE SPEC.
- 42 BOOK DROP BY GC. PROVIDE KINGSLEY 020 IN-WALL BOOK RETURN FACEPLATE, HEATHERHOOD, AND CHUTE.
- 43 COAT HOOKS BY OTHERS. PROVIDE BLOCKING.
- 44 CUT NEW OPENING IN EXISTING OUTSIDE WALL, PROVIDE LINTEL FOR NEW DOOR.
- 45 RELOCATED PROJECTION SCREEN. SEE ELECTRICAL.
- 46 ROOF BELOW, SEE ROOF PLAN.
- 47 1" DEEP PLASTIC LAMINATE HAT SHELF WITH STEEL COAT ROD BELOW.
- 48 PROVIDE ALUMINUM CLOSURE BY WINDOW MFR WITH COMPRESSIBLE FOAM GASKET TO SEAL BETWEEN WALL AND GLASS.