

**Wells County Public Library**  
200 West Washington Street  
Bluffton, Indiana 46714

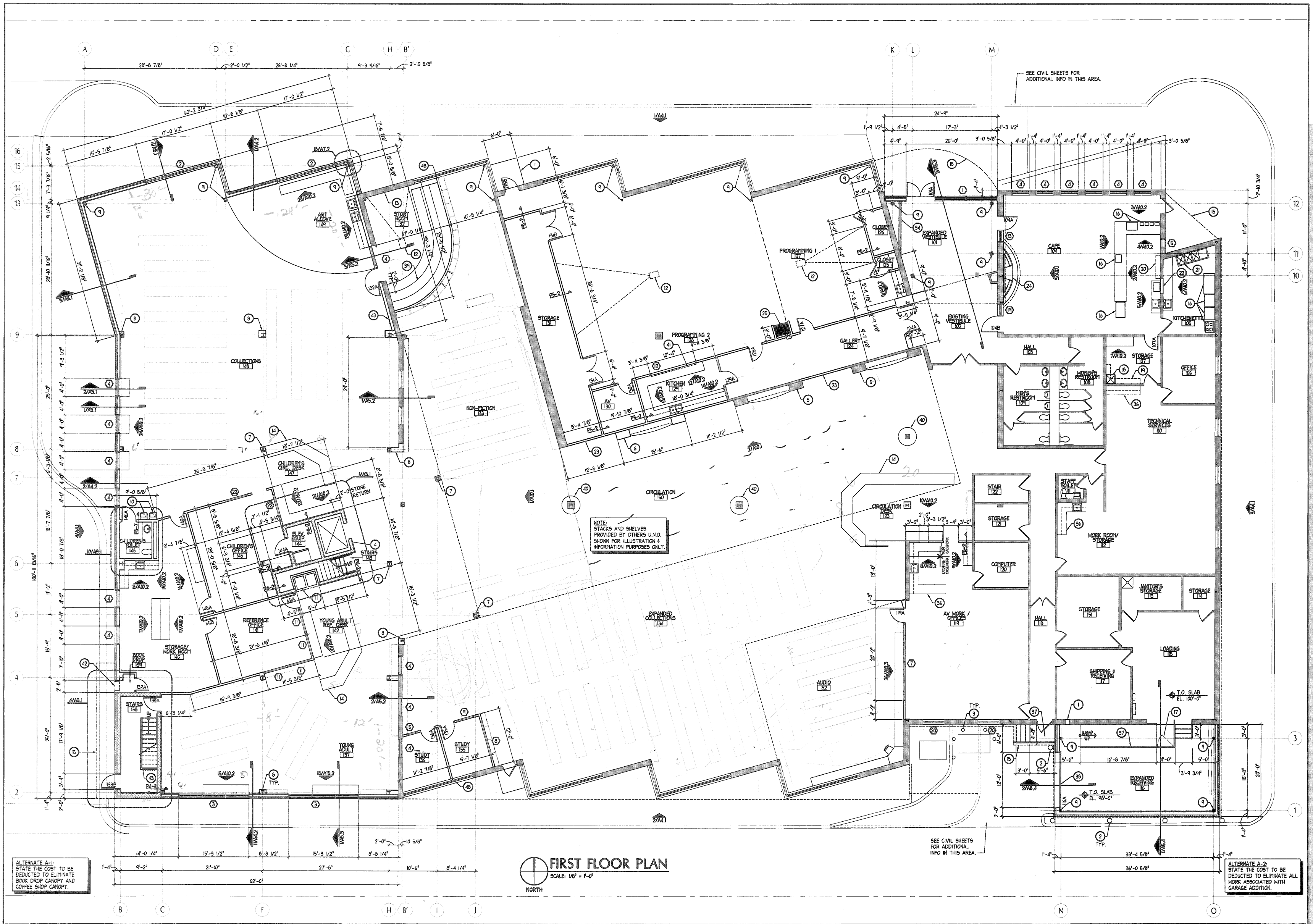


REVISION DATE BY

DATE PROJECT  
11/2/2005 2005.0039

TITLE  
First Floor Plan

SHEET  
A1.1



- PLANNING CONSTRUCTION NOTES**
- INFILL EXISTING BOOK DROP OPENING WITH BRICK VENEER AND METAL STUD & GYPSUM BOARD HALL TO MATCH EXISTING ADJACENT SURFACES.
  - 6" PAINTED STEEL PIPE BOLLARD, PAINTED. SEE CIVIL DRAWINGS.
  - 4" PAINTED STEEL PIPE BOLLARD, PAINTED. SEE CIVIL DRAWINGS.
  - PRECAST STONE VENEER OVER CMU AT ENTIRE FRONT FACE OF ELEVATOR AND 2' RETURNED AT EACH CORNER OF ELEVATOR.
  - PRECAST STONE VENEER OVER EXISTING TILE / NEW CEMENT BOARD. SEE INTERIOR ELEVATIONS FOR ADDITIONAL INFORMATION.
  - NEW BOOK DISPLAY WITH PRECAST STONE VENEER. SEE INTERIOR ELEVATIONS FOR ADDITIONAL INFORMATION.
  - 1-1/2" FURRING AND 5/8" GYPSUM BOARD COLUMN WRAP.
  - METAL STUD AND GYPSUM BOARD COLUMN WRAP. ALIGN GYPSUM BOARD FLUSH WITH ADJACENT SURFACES, WHERE APPLICABLE.
  - PAINT EXPOSED TUBE STEEL COLUMN.
  - ELECTRIC WATER COOLER. SEE PLUMBING PLAN.
  - LIBRARY CART NOOK. SEE ENLARGED STAIR PLANS. CARTS BY OTHERS.
  - CEILING MOUNTED PROJECTOR, BY OTHERS. SEE ELECTRICAL DRAWINGS.
  - MAGNETIC PAINT, THIS WALL.
  - MODULAR CIRCULATION DESK, BY OWNER. SHOWN FOR REFERENCE ONLY.
  - CANOPY ABOVE. SEE ROOF PLAN AND SECTIONS.
  - CAFE EQUIPMENT, BY OWNER. SHOWN FOR REFERENCE ONLY.
  - PORTION OF STEEL RAMP GUARDRAIL TO OPERATE AS GATE WITH LATCH. 3'-6" MIN. OPENING.
  - NEW MOP BASIN, SEE PLUMBING.
  - 4" DEEP WIRE SHELVING ON HEAVY DUTY STANDARDS AND BRACKETS @ 32" O.C. MAX. PROVIDE 3 ROWS OF SHELVING.
  - 4" DEEP PLASTIC LAMINATE SHELVING ON HEAVY DUTY STANDARDS AND BRACKETS @ 16" O.C. MAX. PROVIDE 5 ROWS OF SHELVING.
  - MAGNETIC PAINT, THIS WALL.
  - THREE COMPARTMENT SINK. SEE PLUMBING DRAWINGS.
  - INFILL EXISTING OPENING WITH METAL STUDS AND GYPSUM BOARD. FINISH FLUSH WITH ADJACENT SURFACES.
  - NEW 3-5/8" METAL STUD AND 5/8" DRYWALL PART ON TO 15'-4" AFF WITH STAINED WOOD CAP. SEE INTERIOR ELEVATIONS FOR ADDITIONAL INFORMATION.
  - PRECAST STONE VENEER FIREPLACE WITH STONE HEARTH AND WOOD MANTLE. SEE INTERIOR ELEVATIONS FOR ADDITIONAL INFORMATION.
  - OVERHEAD TRACK PAIRED PANEL, OPERABLE PARTITION WITH FABRIC FINISH, STC 91 MIN. PROVIDE WITH NFPA'S STANDARD SELF-SUPPORTING CEILING AND OVERHEAD JOIST SYSTEM TO PROVIDE INSULATED METAL STUD AND GYPSUM BOARD BULKHEAD FROM TOP OF JOIST SYSTEM TO DECK ABOVE.
  - 42" GLASS GUARDRAIL WITH STAINED WOOD CAP. SEE WALL SECTIONS FOR ADDITIONAL INFORMATION.
  - 42" 3-5/8" METAL STUD AND 5/8" GYPSUM BOARD HALL WITH STAINED WOOD CAP.
  - 42" 3-5/8" METAL STUD AND 5/8" GYPSUM BOARD HALL WITH GYPSUM BOARD CAP.
  - 6" CMU BLOCK WALL TO 42" ABOVE MEZZANINE FLOOR, THIS LOCATION. PROVIDE 3-5/8" METAL STUD WALL WITH 5/8" GYPSUM BOARD BOTH SIDES ON TOP OF CMU WALL TO DECK ABOVE.
  - RELOCATE OWNER'S EXISTING LOCKERS TO THIS LOCATION.
  - PROVIDE OPAQUE PEEL AND STICK VINYL COATING ON INSIDE OF GLAZING.
  - EXISTING CATWALK, REWORK HANDRAIL AS REQUIRED.
  - NEW CATWALK, SEE STRUCTURAL, PROVIDE NEW HANDRAIL TO MATCH EXISTING.
  - TACKABLE FABRIC SURFACE ON 3/4" PLYWOOD OVER GYTBORAD, SEE SHEET A1.1.
  - LINE OF BULKHEAD, ABOVE.
  - EXISTING CASEWORK TO REMAIN. PROTECT THROUGHOUT CONSTRUCTION.
  - NEW CONCRETE STEPS / RAMP / PAINTED STEEL HANDRAILS.
  - OVERHEAD DOOR & OPERATOR.
  - 1" RISERS - 3/4" T&G PLYWOOD OVER STEEL STUD FRAMING. SEE FINISH SCHEDULE FOR ADDL. INFORMATION.
  - COMPUTER SHELF, SEE TYPICAL DETAIL.
  - OVERHEAD COILING GRILL, SEE SPEC.
  - BOOK DROP BY GC. PROVIDE KINGSLEY 020 IN-WALL BOOK RETURN FACEPLATE, HEATHERWOOD, AND CHUTE.
  - COAT HOOKS BY OTHERS. PROVIDE BLOCKING.
  - CUT NEW OPENING IN EXISTING OUTSIDE WALL, PROVIDE LINTEL FOR NEW DOOR.
  - RELOCATED PROJECTION SCREEN. SEE ELECTRICAL.
  - ROOF BELOW, SEE ROOF PLAN.
  - 17" DEEP PLASTIC LAMINATE HAT SHELF WITH STEEL COAT ROD BELOW.
  - PROVIDE ALUMINUM CLOSURE BY WINDOW NFPA WITH COMPRESSIBLE FOAM GASKET TO SEAL BETWEEN HALL AND GLASS.