



CERTIFICATION



All concepts, ideas, designs, plans and details as shown on this document are the sole property of Design Collaborative, Inc. and shall not be used for any purpose without their expressed written consent. The owner shall be permitted to retain copies for information and reference.

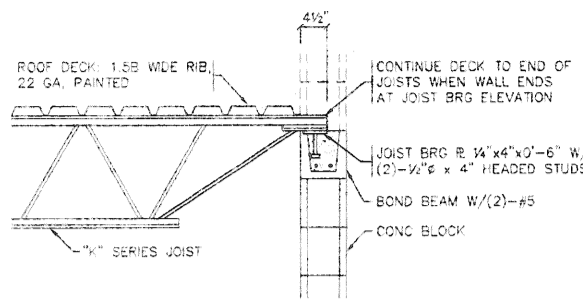
**Wells County Public Library**  
200 West Washington Street  
Bluffton, Indiana 46714



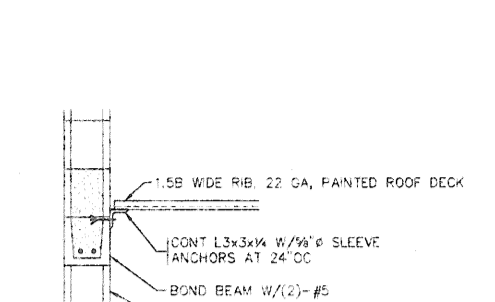
REVISION DATE BY

DATE	PROJECT
11-2-2005	2005.0039
	TITLE
	Third Floor Framing Plan and Roof Framing Plan
	SHEET

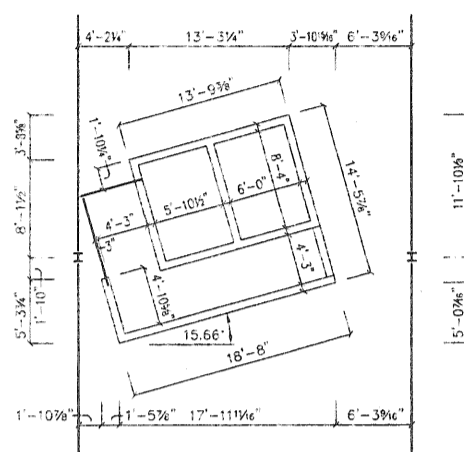
**S3.2**



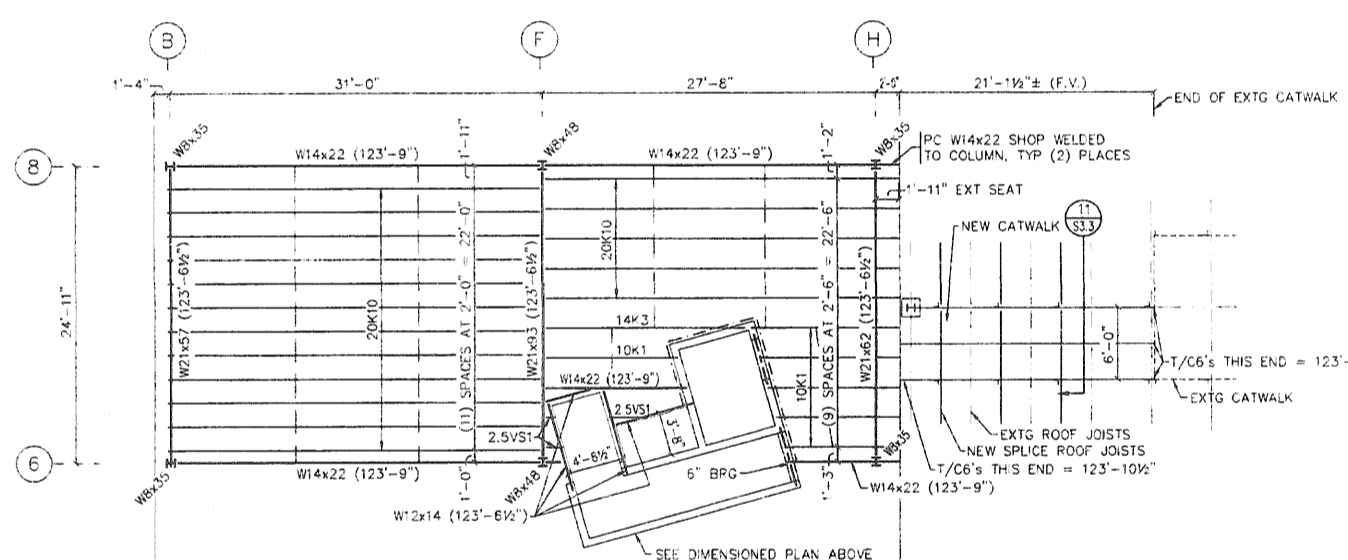
TYP JOIST BRG AT ROOF SECTION 1/8" = 1'-0"  
UNLESS NOTED OTHERWISE



TYP DECK END BRG AT ROOF 1/8" = 1'-0"

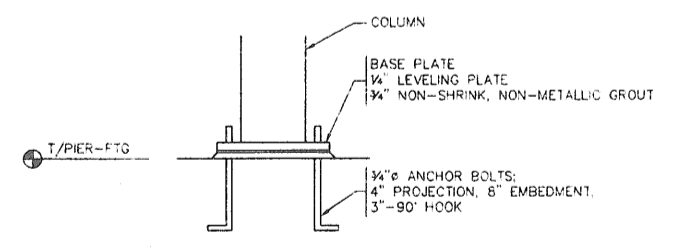


DIMENSIONED PLAN AT SECOND FLOOR FRAMING 1/8" = 1'-0"  
NOTE: ALL WALLS ARE 7/8" THICK

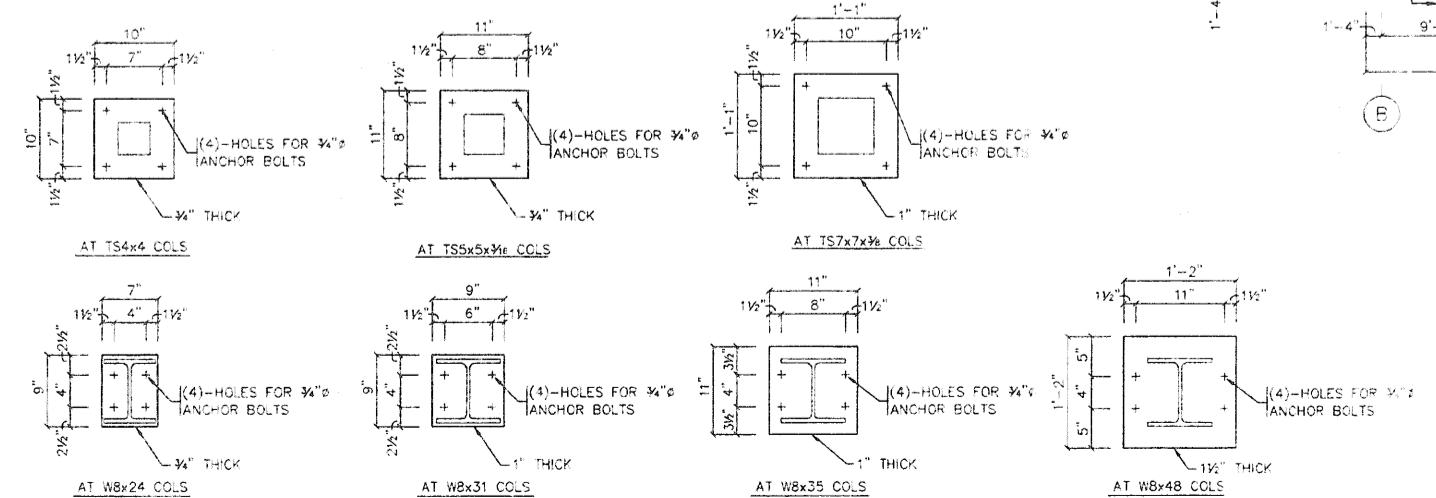


THIRD FLOOR FRAMING PLAN 1/8" = 1'-0"

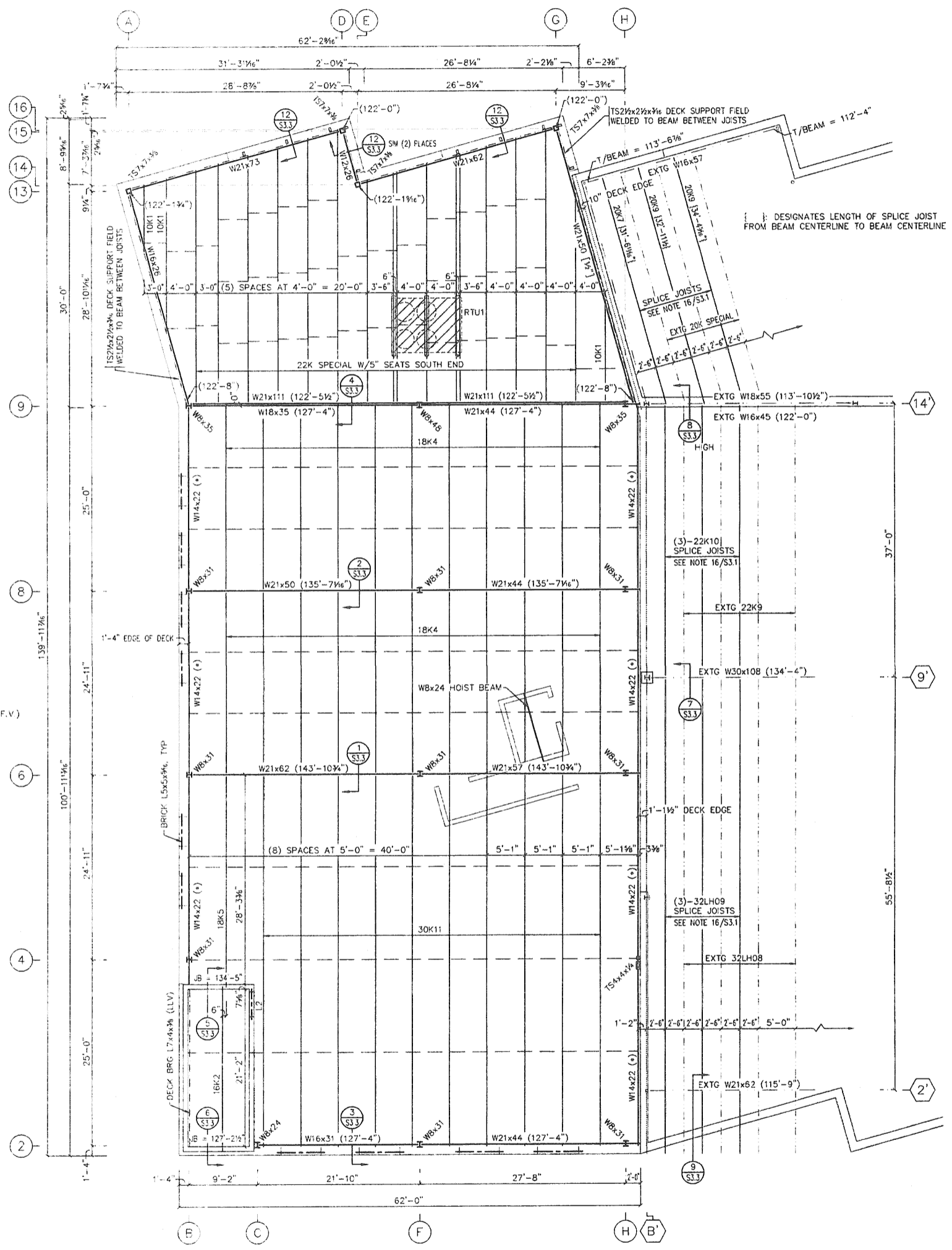
- NOTES  
1. SEE NOTES 1-16 ON SHEET S3.1  
2. FLOOR: 3" CONC SLAB W/6x6-W2.9xW2.9 WWV OVER .6C 26 GA. GALV DECK. T/SLAB = 124'-0".



TYP COL TO FDTN CONNECTION NTS

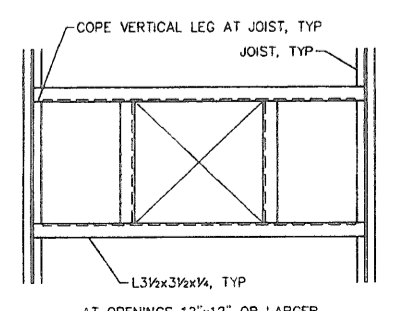


BASE PLATE DETAILS 1" = 1'-0"



ROOF FRAMING PLAN 1/8" = 1'-0"

- NOTES  
1. SEE NOTES 1-17 ON SHEET S3.1  
2. PROVIDE 8" PRECAST PLANKS OVER ELEVATOR SHAFT.  
3. PROVIDE L3x3x1/4 (LH) AT BOTTOM FLANGE OF PERIMETER BEAMS FOR FASTENING OF STEEL STUDS.



TYP FLOOR/ROOF OPENING NTS