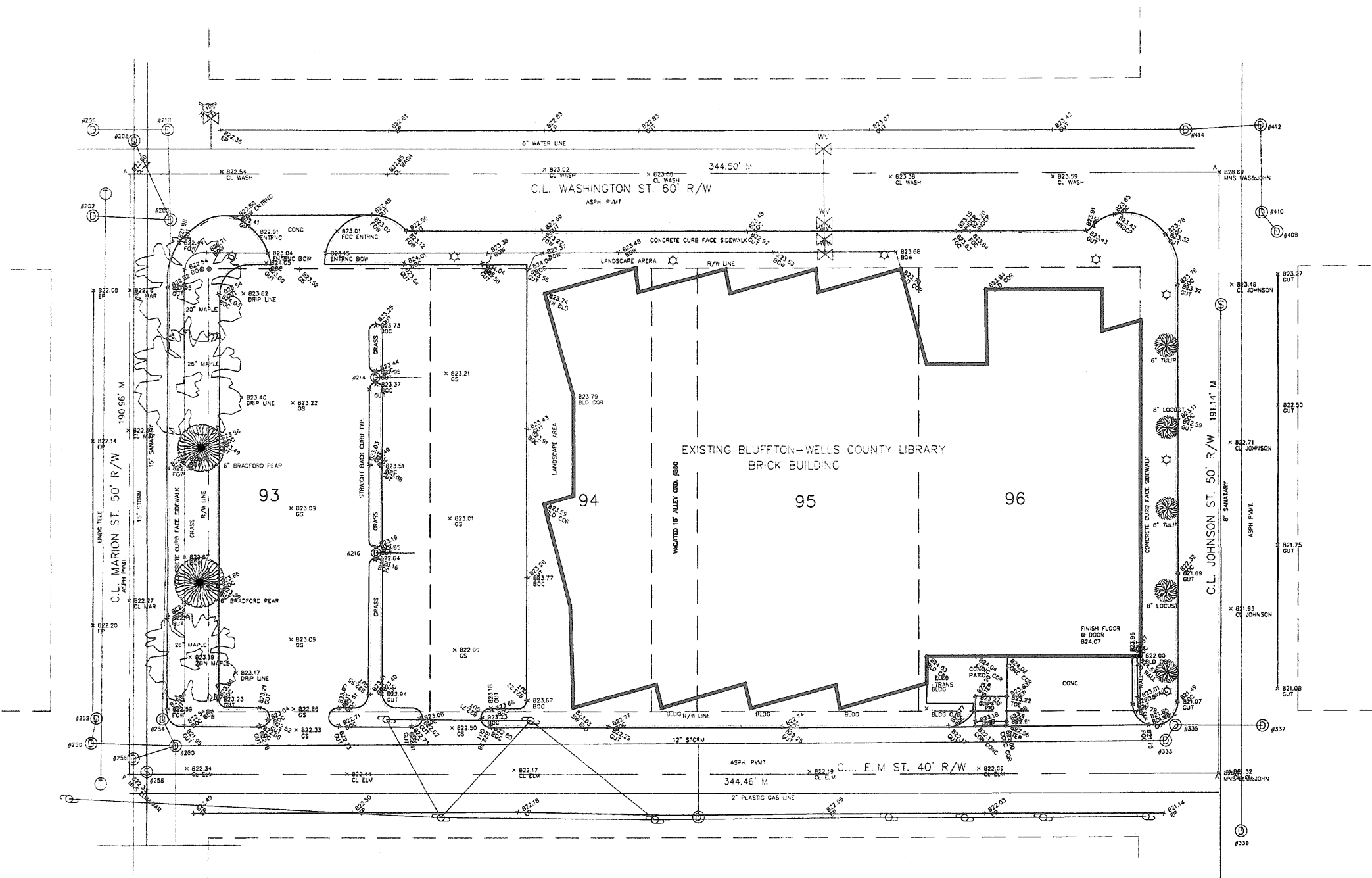




CERTIFICATION

LOTS NUMBERED NINETY-THREE (93), NINETY-FOUR (94), NINETY-FIVE (95)
AND NINETY-SIX (96) AS KNOWN AND DESIGNATED ON THE RECORDED
PLAT OF THE TOWN OF BLUFFTON.



MANHOLE & INLET TABLE

| | | |
|------|-----------------|--------|
| #200 | INLET N. RIM | 821.89 |
| | 10" PVC WEST | 818.04 |
| | 12" PVC N.W. | 818.04 |
| | 12" PVC NORTH | 818.14 |
| | 12" PVC SOUTH | 818.24 |
| #250 | INLET N. RIM | 821.97 |
| | 10" PVC EAST | 819.27 |
| #252 | INLET N. RIM | 821.83 |
| | 10" CLAY S.W. | |
| #254 | M. H. N. RIM | 821.86 |
| | 10" CLAY SOUTH | 819.61 |
| #256 | INLET N. RIM | 822.06 |
| | CLAY NORTH | 812.88 |
| | 15" PVC EAST | 815.22 |
| #258 | M. H. N. RIM | 822.17 |
| | 15" RCP NORTH | 810.17 |
| | 15" PVC WEST | 810.65 |
| | 15" RCP SOUTH | 810.32 |
| | 10" CLAY SOUTH | 810.53 |
| | 10" CLAY SOUTH | 812.63 |
| #260 | INLET N. RIM | 822.03 |
| | 12" HDPE NORTH | 816.40 |
| | 12" HDPE SOUTH | 816.40 |
| | 15" PVC WEST | 818.00 |
| | 15" PVC S.W. | 815.60 |
| | 12" PVC EAST | 815.70 |
| #280 | INLET N. RIM | 821.68 |
| | 8" PVC TO BLDG | 819.54 |
| #333 | INLET N. RIM | 821.00 |
| | 8" PVC N.E. | 816.26 |
| | 12" PVC WEST | 816.55 |
| #335 | INLET N. RIM | 821.00 |
| | 10" CLAY N.E. | 817.40 |
| | 8" PVC S.W. | 817.55 |
| | 6" STEEL N.W. | 818.07 |
| | 4" CLAY NORTH | 818.55 |
| #337 | INLET N. RIM | 821.05 |
| | 10" CLAY WEST | 816.00 |
| #339 | M. H. N. RIM | 821.40 |
| | FULL OF WATER | |
| #406 | SAN. N. RIM | 823.50 |
| | 12" CLAY SOUTH | 816.20 |
| #214 | C. BASIN N. RIM | 822.78 |
| | 10" STEEL EAST | 818.60 |
| | BOTTOM | 815.60 |
| #216 | C. BASIN N. RIM | 822.56 |
| | 10" STEEL EAST | 818.36 |
| | BOTTOM | 815.40 |

All concepts, ideas, designs, plans and details as shown on this document are the sole property of Design Collaborative, Inc. and shall not be used for any purpose without their expressed written consent. The owner shall be permitted to retain copies for information and reference.

Wells County Public Library
200 West Washington Street
Bluffton, Indiana 46714



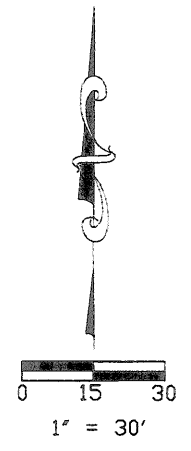
REVISION DATE BY

| | | |
|--|--|--|
| | | |
| | | |
| | | |
| | | |
| | | |
| | | |

DATE PROJECT
10-25-2005 2005.0039

TITLE
Existing Conditions

SHEET
C1.0



LEGEND:
A = MAG NAIL SET FLUSH
B = 5/8" REBAR STAKE W/HOHN DDD CAP SET FLUSH

BM #1 MAG NAIL @
C.L. WASHINGTON & MARION
ELEV. 822.65
BM #2 MAG NAIL
C.L. MARION & ELM
ELEV. 822.33

NOTE:
UTILITY LOCATIONS ARE APPROXIMATE
AND SHOULD BE VERIFIED BY THE
PROPER UTILITY BEFORE
ANY CONSTRUCTION

LOTS ARE 70' X 140'

| REVISIONS | | PROJECT | DRAWN JAH |
|-----------|-------------|---|--------------------|
| DATE | DESCRIPTION | | |
| | | STODDY ASSOCIATES LAND SURVEYORS 121 E MARKET STREET BLUFFTON, IN. 46714 (260)-824-5577 | CHECKED |
| | | | FILE NO. |
| | | BLUFFTON-WELLS COUNTY LIBRARY | SCALE 1" = 30' |
| | | | DATE 9-12-05 |
| | | | JOB NO. W-12333 |
| | | BOUNDARY & TOPG | SHEET 1 OF 1 |